

# Cameron County Regional Mobility Authority Project Status Update



December 11, 2025

# Presentation Overview

- Transportation Reinvestment Zone (TRZ) development history in Cameron County
- Project development made possible by TRZ
- The benefit of leveraging the TRZ in combination with other project funding tools such as: tolling, state/federal funding, interlocal agreements, VRF, etc.
- System of Projects





# TRZ #6: Project List

Project Area	Project
BROWNSVILLE	Flor de Mayo International Bridge
BROWNSVILLE	US 281 Connector – I69E to US 281
BROWNSVILLE	SH 32/East Loop
BROWNSVILLE	SH 550 DC to Brownsville
BROWNSVILLE	West Blvd./West Rail Trail – I69E to B&M Bridge
BROWNSVILLE	SH 550 – I69 to SH 48, Including Gap 1 and Gap 2
BROWNSVILLE	Gateway Intl. Pedestrian Bridge, and Support Structures
BROWNSVILLE	Realignment of International Blvd., Improvements on 6 <sup>th</sup> , 7 <sup>th</sup> , 10 <sup>th</sup> , 11 <sup>th</sup> , and 12 <sup>th</sup> Streets
BROWNSVILLE	FM 511 – SH 4 to SH 48
BROWNSVILLE	Florida Road- FM 511 to FM 1419
BROWNSVILLE	Old Port Isabel Road – SH 550 to SH 100
BROWNSVILLE	FM 1732 – I69E to US 281
BROWNSVILLE	Dockberry Road
BROWNSVILLE	B&M Bridge and Access Roads
BROWNSVILLE	FM 1421 – I69E to US 281
BROWNSVILLE	Overpass at I69E and Veterans Bridge
BROWNSVILLE	New Boulevard from Sam Perl Blvd. to Palm Blvd.
BROWNSVILLE	South Port Connector – SH 4 to Ostos Road
BROWNSVILLE	Gateway Bridge to B&M Bridge – Roads, Hike and Bike Trails and Parking Garages (Riverfront Development Project)
BROWNSVILLE	Dana Road – FM 802 to FM 3248
BROWNSVILLE	Interstate 69E and Highway 100 Area
BROWNSVILLE	SH 4 – FM 511 to Boca Chica Beach
BROWNSVILLE	Morrison Rd- FM 3248 to FM 1847
BROWNSVILLE	Pablo Kisel Boulevard- I-69 to FM 3248
HARLINGEN	FM 509 – US 281 to FM 106
HARLINGEN	FM 507 – Loop 499 to FM 508
HARLINGEN	Grimes Road – Loop 499 to FM 508
HARLINGEN	FM 1479 – I69E to US 281
HARLINGEN	Overpass at 281 and FM 509
HARLINGEN	FM 1925 – I69E to FM 491 (I 69 Connector)
HARLINGEN	Outer Parkway
HARLINGEN	FM 509 Extension – FM 508 to FM 1599
HARLINGEN	Rail/Realignment on Commerce Street
LAGUNA VISTA	Buena Vista Road – Highway 100 to FM 510 or Centerline Road
LA FERIA	FM 506 – Interstate 2 to SH 107
LA FERIA	FM 506 – Interstate 2 to US 281
LOS FRESNOS	Cameron County Airport Improvements, Including Access Roads
LOS FRESNOS	Old Alice Road – SH 100 to Sports Park Blvd.

LOS FRESNOS	FM 1847 – FM 510 to Arroyo City
LOS FRESNOS	Whipple Road – FM 1575 to FM 1847
LOS FRESNOS	Sidewalks along FM 1847 – SH 550 to Henderson Road
OLMITO	UPRR Rail Line between Olmito Switchyard and Harlingen
PORT ISABEL	Port Isabel/SBND Road
PORT ISABEL	HWY 48 I69E – SH 100
PRIMERA	Sidewalk along Alonzo Road to West US 77/ I69E Frontage Road
PRIMERA	Stuart Place Road- Wilson Road to SH 107
SAN BENITO	Stenger Rd Sidewalk Improvements from West Bus 77 to Fannin St
SAN BENITO	US 281 – FM 1577 to County Line
SAN BENITO	FM 1577 – I69E to US 281
SAN BENITO	FM 510 – FM 509 to Buena Vista Road
SAN BENITO	SH 345 – I69E to US 281 and Arroyo Colorado to the North
SAN BENITO	U.S. 77 South Parallel Corridor- FM 1479 to FM 732
SAN BENITO	San Jose Ranch Road – SH 345 to FM 509
SAN BENITO	SH 107 – County Line to I69E
SOUTH PADRE	SPI 2 <sup>nd</sup> Access
SOUTH PADRE	SH 100 Improvements at SPI
SOUTH PADRE	SPI Queen Isabella Memorial Causeway Bike Lane



TRANSPORTATION REINVESTMENT ZONE  
EXPENSE BY FISCAL YEARS

Project Area	Project	PRIOR TRZ										
		2011-2016	2017	2018	2019	2020	2021	2022	2023	2024	2025	Totals
Brownsville	SH32 / East Loop	\$ 767,043.00	\$ 23,417.44	\$ 18,264.85	\$ 14,866.67	\$ 308,462.29	\$ 55,271.35	\$ 51,433.08	\$ -	\$ 380,654.03	\$ 414,309.51	\$ 2,033,722.22
Brownsville	Dana Road - FM 802 to FM 3248	-	-	-	-	-	-	-	-	36,842.61	157,437.84	194,280.45
Brownsville	Gateway International Pedestrian Bridge	-	-	-	-	-	-	-	-	114,920.36	75,361.59	190,281.95
Brownsville	SH550 - I69E to SH48 , Including Gap 1 and 2	-	-	326,886.02	3,545.17	232,907.80	156,529.87	120,970.85	209,855.10	130,783.76	551,432.55	1,732,911.12
Brownsville	Veterans Bridge	-	-	-	-	-	421.82	2,168.10	-	74,549.53	12,838.99	89,978.44
Brownsville	South Port Connector SH4 to Oston Road	-	-	37,021.02	-	-	-	-	-	-	-	37,021.02
Brownsville	West Blvd / West Rail Trail - I69E to B&M Bridge	-	-	32,493.43	-	30,731.68	11,608.75	750.00	-	9,038.48	18,209.35	102,831.69
Brownsville	Flor de Mayo Bridge	-	-	-	-	-	13,529.78	-	-	18,334.63	125,162.55	157,026.96
Brownsville	FM 511	-	-	-	-	-	-	-	-	-	49,786.46	49,786.46
Harlingen	Outerparkway - SPI 2nd Access to I69E	-	-	-	-	-	-	-	-	7,122.96	1,929,417.20	1,936,540.16
Harlingen	Free Trade Bridge	-	-	-	-	-	-	-	-	17,105.47	16,709.11	33,814.58
Harlingen	Rail /Commerce Street / North Rail Relocation	-	-	-	-	-	-	-	42,682.51	71,156.98	174,753.25	288,592.74
Harlingen	FM 509 Extension FM 106 to FM 1579	-	-	-	78,600.00	30,731.68	1,671.76	-	-	23,804.96	21,699.67	156,508.07
Los Fresnos	Sidewalks along FM 1847 - SH550 to Henderson Road	-	-	-	-	-	-	-	-	16,810.88	54,865.33	71,676.21
Los Fresnos	Whipple Road FM 1575 to FM 1847	-	-	-	-	30,731.68	8,151.10	62,725.22	22,346.89	48,139.96	11,963.21	184,058.06
Los Fresnos	Old Alice Rd	-	-	-	31,040.60	3,677.44	66,963.92	838.38	82,106.17	40,844.19	105,241.61	330,612.31
Olmito	Naranjo Road	-	-	-	6,208.12	919.35	6,618.77	209.59	-	-	-	13,955.83
Port Isabel	SH48 Master Plan	-	-	-	-	-	-	-	-	314,608.52	43,598.00	358,206.52
Port Isabel	I69E	-	-	-	-	-	-	-	121,958.12	10,108.12	669.31	132,735.55
Port Isabel	SH 48 Master Plan I69E SH 100	-	-	-	-	-	-	-	73,143.33	9,629.06	4,886.94	87,659.33
Primera	Sidewalks along Primera Road	-	-	-	-	-	-	-	-	63,205.04	-	63,205.04
San Benito	US 77 South Parallel Corridor (All Phases)	-	-	-	-	-	-	-	-	15,913.90	185,676.98	201,590.88
San Benito	US 281 - FM 1577 to County Line	-	-	-	-	-	-	-	-	9,835.86	7,166.36	17,002.22
San Benito	Stenger Road	-	-	-	-	-	-	-	-	127,165.30	176,665.56	303,830.86
South Padre	SPI 2nd Access	-	-	-	18,784.31	-	56,360.08	31,478.00	-	35,075.42	45,348.03	187,045.84
	Total Expenses:	\$ 767,043.00	\$ 23,417.44	\$ 414,665.32	\$ 153,044.87	\$ 638,161.92	\$ 377,027.20	\$ 270,573.22	\$ 552,092.12	\$ 1,575,650.02	\$ 4,183,199.40	\$ 8,954,874.51
	Total TRZ received 2011-Current	-	-	-	-	-	-	-	-	-	-	28,776,339.47
	TRZ Available Funds:	-	-	-	-	-	-	-	-	-	-	\$ 19,821,464.96



# Transportation Reinvestment Zone Expenses by Fiscal Years



# TRZ #6: A Comprehensive Update

- On December 29, 2015, the County and the RMA entered into an agreement to participate in Transportation Reinvestment Zone (TRZ) No.6 in the County of Cameron.
- TRZ No. 6 has generated:
  - Revenues totaling \$28.7M and steadily increasing.
  - Project expenses totaling over \$8.9M.



# Delivering “More than Roads” in Cameron County and the Rio Grande Valley



## PIPELINES TRANSPORTATION

1. Brownsville to Matamoros
2. Matamoros to Brownsville



## PIPELINES TRANSPORTATION



## AIRPORTS

### 6 AIRPORTS (PLUS REYNOSA AND MATAMOROS AIRPORTS)

1. Valley International Airport (Harlingen, TX)
2. Brownsville-South Padre Island Airport (Brownsville, TX)
3. McAllen-Miller International Airport (McAllen, TX)
4. Port Isabel-Cameron County Airport (Los Fresnos, TX)
5. South Texas International Airport (Edinburg, TX)
6. Mid Valley Airport (Weslaco, TX)
7. General Lucio Blanco International Airport (Reynosa, Tamaulipas)
8. Matamoros International Airport (Matamoros, Tamaulipas)

### 14 INTERNATIONAL BRIDGES (INCLUDES CAMERON, HIDALGO, AND STARR COUNTIES)

1. Veterans International Bridge at Los Tomates (Brownsville, TX – Matamoros, Tamaulipas)
2. Gateway International Bridge (Brownsville, TX – Matamoros, Tamaulipas)
3. B&M Bridge (Brownsville, TX – Matamoros, Tamaulipas)
4. West Rail International Bridge (Brownsville, TX – Matamoros, Tamaulipas)
5. Free Trade Bridge (Los Indios, TX – Lucio Blanco, Tamaulipas)
6. Weslaco – Progreso International Bridge (Progreso, TX – Nuevo Progreso, Tamaulipas)
7. Donna International Bridge (Donna, TX – Rio Bravo, Tamaulipas)
8. Pharr-Reynosa International Bridge (Pharr, TX – Reynosa, Tamaulipas)

9. McAllen – Hidalgo International Bridge (Hidalgo, TX – Reynosa, Tamaulipas)
10. Anzalduas International Bridge (Mission, TX – Reynosa, Tamaulipas)
11. Los Ebanos Ferry (Los Ebanos, TX – Gustavo Diaz Ordaz, Tamaulipas)
12. Rio Grande City-Camargo Bridge (Rio Grande City, TX – Camargo, Tamaulipas)
13. Roma-Ciudad Miguel Aleman Bridge (Roma, TX – Ciudad Miguel Aleman, Tamaulipas)
14. Lake Falcon Dam Crossing (Falcon Heights, TX – Ciudad Guerrero, Tamaulipas)

### 4 INTERSTATES

1. Interstate 2
2. Interstate 69E
3. Interstate 69C
4. Interstate 169

## 6 MODES OF TRANSPORTATION



## ROADWAY TRANSPORTATION



## RAILWAYS TRANSPORTATION



## SEAPORTS

### 3 SEAPORTS

1. Port of Brownsville (Brownsville, TX)
2. Port of Harlingen (Harlingen)
3. Port of Port Isabel (Port Isabel, TX)



## SPACE TRAVEL

### SPACE PORT

- Space X

### RAILWAYS TRANSPORTATION

1. West Rail

# CCRMA Balance Sheet

## 09/30/25

### CAMERON COUNTY REGIONAL MOBILITY AUTHORITY

Balance Sheet  
As of 9/30/2025

	Current Year
<b>ASSETS</b>	
Current Assets:	
Cash and cash equivalents	\$ 10,051,782
Restricted cash - ILA Advanced Funding	10,036,959
Restricted cash accounts - debt service	11,333,302
Restricted cash - bond proceeds	1,227,562
Restricted cash - Transportation Reinvestment Zone (TRZ)- South Padre Is	5,000,000
Restricted cash - Transportation Reinvestment Zone (TRZ)- East Loop	6,940,907
Restricted cash - Transportation Reinvestment Zone (TRZ)- Outer Parkway	490,758
Restricted cash - Transportation Reinvestment Zone (TRZ)- US 281 Conne	1,000,000
Restricted cash - Transportation Reinvestment Zone (TRZ)- Whipple Road	997,358
Restricted cash - Transportation Reinvestment Zone (TRZ)- Old Alice Rd	2,998,282
Restricted cash - Transportation Reinvestment Zone (TRZ)- Other Projects	2,785,676
Accounts receivable, net	
Vehicle Registration Fees - Receivable	644,025
Toll receivable	1,563,983
Total Accounts receivable, net	2,208,008
Accounts receivable - other agencies	
Due from Other Agencies	2,573,926
Total Accounts receivable - other agencies	2,573,926
Accounts Receivable in Collections	
Collection Linebarger - Base Toll	889,920
Collections Linebarger - Violations	4,357,139
Allowance Collections Linebarger	(4,140,160)
Total Accounts Receivable in Collections	1,106,899
Prepaid expenses	53,465
Total Current Assets:	58,804,884
Non Current Assets:	
Capital assets, net	90,669,978
Capital projects in progress	20,568,813
Unamortized bond prepaid costs	80,602
Net pension asset	289,629
Total Non Current Assets:	111,609,021
Deferred Outflow of Resources	
Deferred outflow related to pension	235,270
Total ASSETS	\$ 170,649,175

Unaudited Financial Statements Subject to Change

### CAMERON COUNTY REGIONAL MOBILITY AUTHORITY

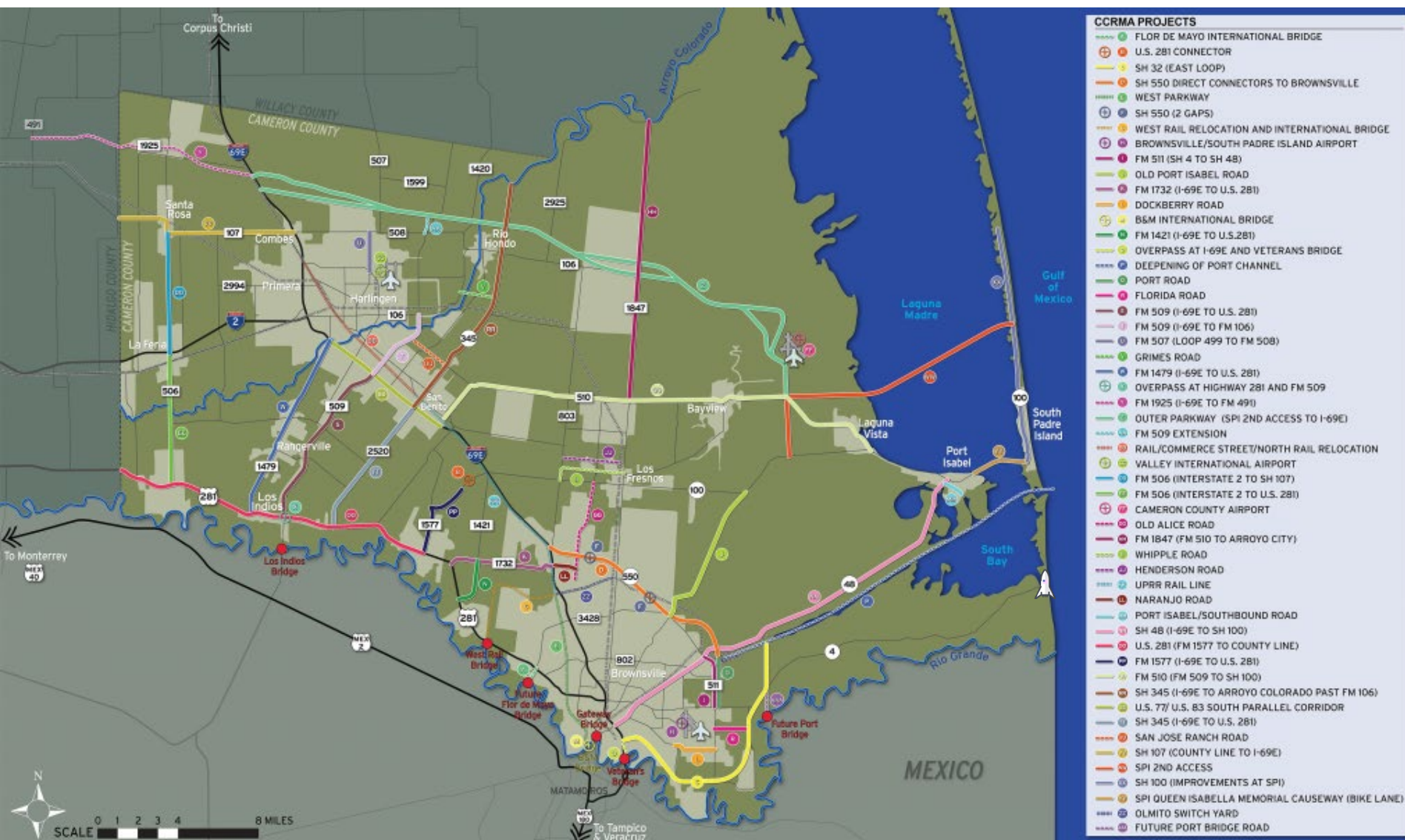
Balance Sheet  
As of 9/30/2025

<b>LIABILITIES</b>	
Current Liabilities	
Accounts payable	\$ 2,374,094
Unearned revenue	9,233,888
Total Current Liabilities	11,607,982
Non Current Liabilities	
Due to other agencies	13,084,420
Long term bond payable	70,015,066
Total Non Current Liabilities	83,099,487
Deferred Inflows of Resources	
Deferred inflows related to pension	188,050
Total LIABILITIES	94,895,518
<b>NET POSITION</b>	
Beginning net position	63,578,810
Total Beginning net position	63,578,810
Changes in net position	
Total Changes in net position	12,174,847
Total NET POSITION	75,753,657
<b>TOTAL LIABILITIES, DEFERRED INFLOWS AND NET POSITION</b>	\$ 170,649,175

Unaudited Financial Statements Subject to Change

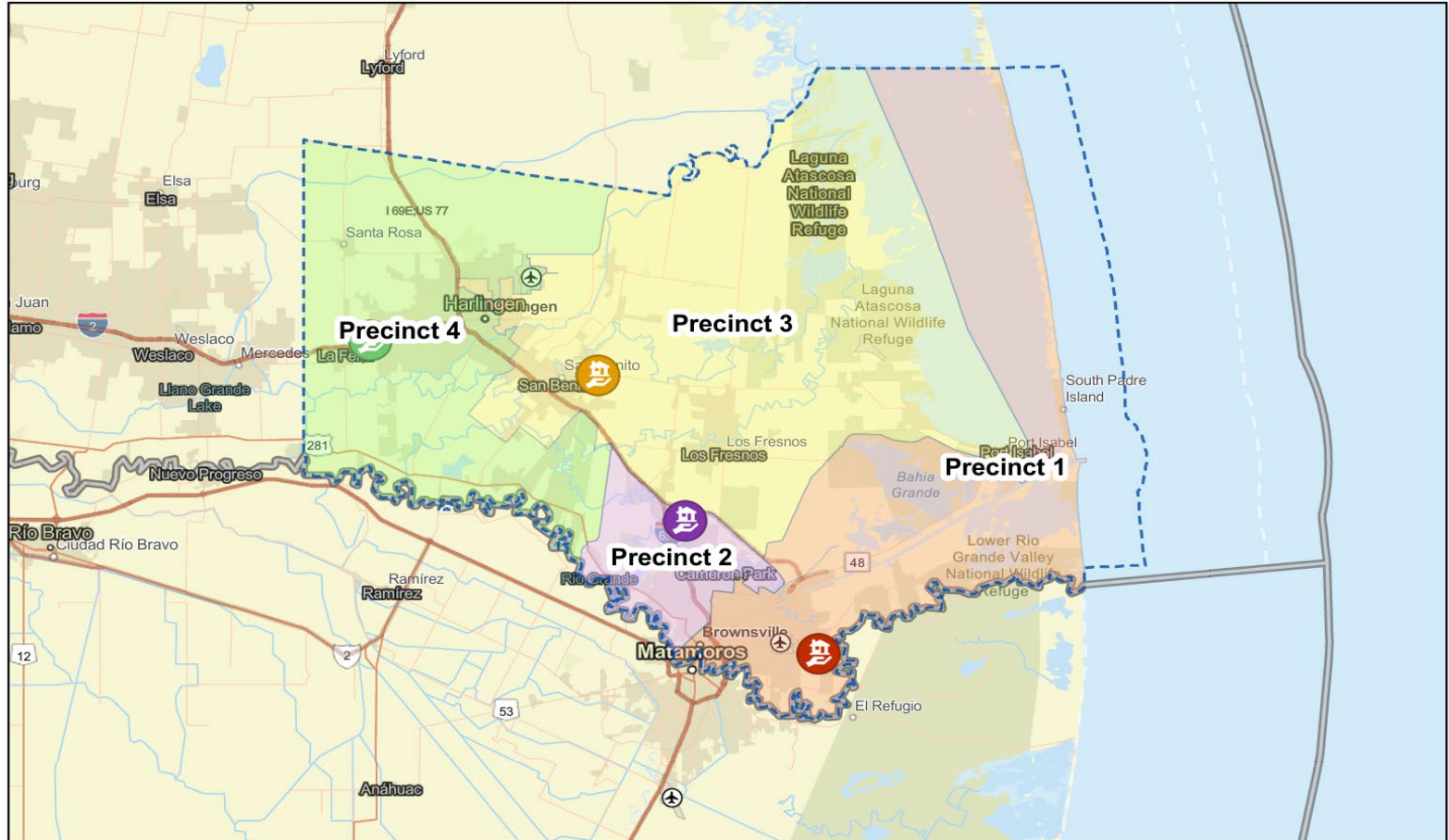


# The Result: Cameron County System of Projects



# Cameron County Precincts

Cameron County Commissioner Pct



# Cameron County Precinct Projects

## Precinct 1

- SPI 2<sup>nd</sup> Causeway
- East Loop
- SH 4
- Gateway Bridge

## Precinct 3

- SPI 2<sup>nd</sup> Causeway
- Outer Parkway
- SPC Phase III
- Old Alice

## Other Projects

- US 77/I69E
- Military Highway Expansion
- SPI Queen Isabella Memorial Causeway  
Bike Lane
- B&M Bridge

## Precinct 2

- Flor de Mayo International Bridge
- U.S. 281 Collector
- Dana Avenue
- SH 550/I 169

## Precinct 4

- Outer Parkway/I 69 Connector
- Stuart Place Road
- Harlingen Rail Relocation
- FM 509





# Tolling along SH 550

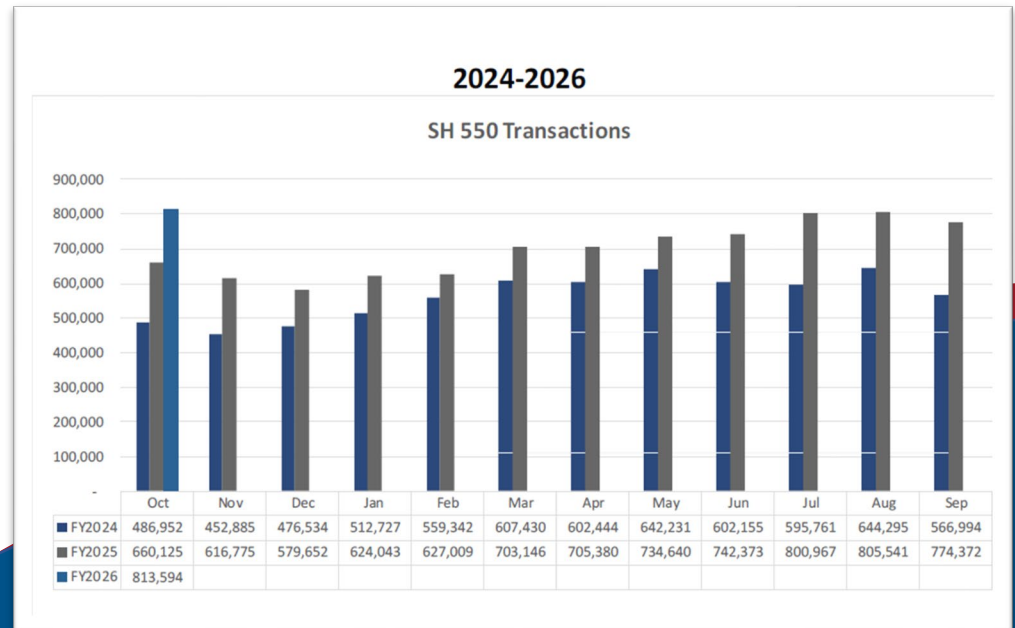


Payment Form	OCT	NOV	DEC	JAN	FEB	MAR	APR	MAY	JUN	JUL	AUG	SEP
Bank	\$3,517.44	\$8,773.48	\$23,021.03	\$11,854.73	\$11,891.04	\$18,289.42	\$14,775.77	\$13,765.36	\$14,954.29	\$22,991.64	\$15,390.93	\$17,100.79
Cash	\$1,467.48	\$7,394.28	\$3,464.08	\$2,724.96	\$5,791.57	\$3,567.54	\$4,671.82	\$3,206.12	\$3,289.96	\$5,228.67	\$5,328.75	\$3,184.54
Check/Money Order	\$9,035.64	\$10,157.82	\$2,481.00	\$8,414.06	\$7,062.19	\$11,365.87	\$5,641.66	\$24,654.26	\$5,208.10	\$10,483.51	\$5,111.10	\$7,800.35
CreditCard/DebitCard	\$166,466.35	\$231,212.48	\$229,993.10	\$263,858.95	\$317,730.05	\$420,235.00	\$393,864.00	\$464,723.15	\$534,193.95	\$506,370.69	\$461,462.81	\$459,822.43
<b>Total Amount</b>	<b>\$180,486.91</b>	<b>\$ 257,538.06</b>	<b>\$258,959.21</b>	<b>\$ 286,852.70</b>	<b>\$ 342,474.85</b>	<b>\$ 453,457.83</b>	<b>\$ 418,953.25</b>	<b>\$ 506,348.89</b>	<b>\$ 557,646.30</b>	<b>\$ 545,074.51</b>	<b>\$ 487,293.59</b>	<b>\$ 487,908.11</b>

YTD \$4,782,994.21

## TXN Year to Year Comparison:

- FY24 to FY25 +24% Increase
- FY23 to FY24 +24% Increase



# Tag Penetration October 2025

**Valid Tag Penetration  
45%**



Agency	Transaction Count	Projected Revenue
FUEGO	143,962	\$ 107,855.11
HCTRA & TxTag	191,779	\$ 132,067.48
NTTA	22,685	\$ 21,839.00
KTA	576	\$ 573.00
PIKEPASS	2,630	\$ 3,020.00
BANKPASS	196	\$ 109.50
E470	171	\$ 202.50
FTE	511	\$ 359.50
LCF	5	\$ 2.50
Total	362,515	\$ 266,028.59

# SH 550 GAP 2 PROJECT

## CSJ: 0684-01-068

The SH 550 Gap 2 is the final Gap Project in the completion of the SH 550/I 169 from I69E to the Port of Brownsville. The project has completed the environmental, right-of-way and utility relocation phases. The project continues making progress towards finalizing design plans with TxDOT to ensure the most current interstate standards are met. When completed Interstate 169 will connect the Port of Brownsville to I69E. This is a significant infrastructure improvement project for Cameron County, the City of Brownsville and the Port of Brownsville.





# SH 550 GAP 2 PROJECT

## CSJ: 0684-01-068

Environmental



Preliminary Engineering



ROW & Utilities

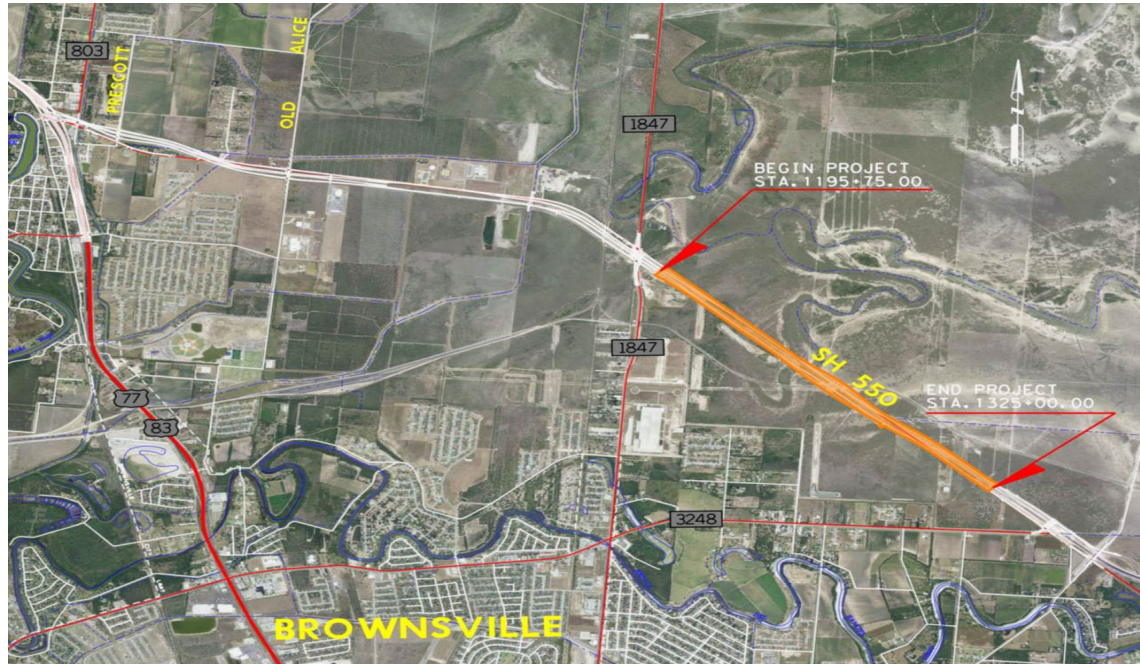


Design 95% PS&E Completed

Funding



Shovel  
Ready



### Recent Activity:

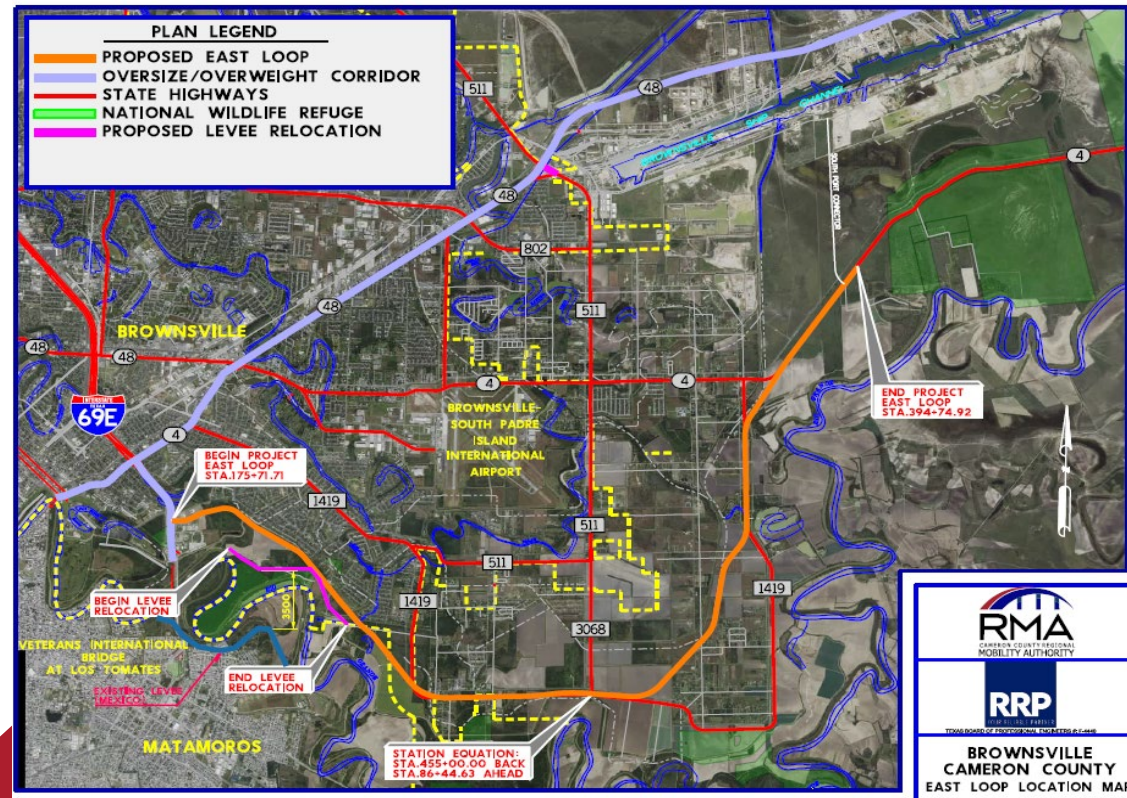
Included in Border Master Plan- High Impact Project  
ROW in Place / Utilities Adjusted  
Environmental Re Evaluation Underway  
PS&E-95% complete  
Funding: \$27.4 Million in CAT 7 + \$1 Million in Cat 10  
= \$28.4 Million Available for Construction  
Construction Cost Estimate(w/ CEI) : \$34,532,389  
Projected Letting FY27 pending Wetland Mitigation



# EAST LOOP- INTERNATIONAL TRADE CORRIDOR

## CSJ: 0921-06-315

The East Loop Project, which serves the international bridge system in Brownsville as well as the Port of Brownsville, which exports, and imports over 28 million metric tons of steel, petroleum, machinery ores and other international trade exports to our Mexico partners. The project, is an international bridge trade corridor which has been on the county's priority list for decades, it is important because it will get overweight commercial trucks out of the densely populated portion of Brownsville from the Veterans bridge to the Port of Brownsville. The East Loop Project will create the East Loop Overweight Corridor for trucks traveling from Mexico and the Veterans International Bridge at Los Tomates to the Port of Brownsville and will reduce congestion on I-69E and State Highway 48.





# EAST LOOP- INTERNATIONAL TRADE CORRIDOR

## CSJ: 0921-06-315

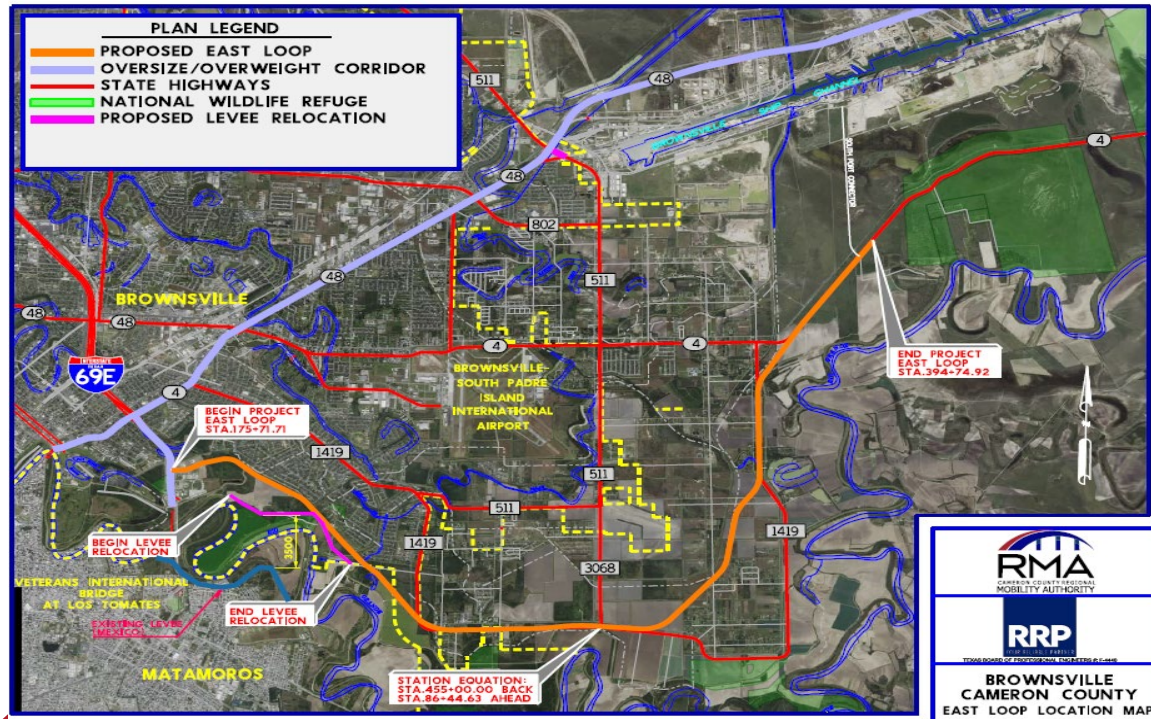
**Environmental** 93% complete

**Preliminary Engineering** ✓

**ROW & Utilities** In Process

**Design** 95%

**Funding** Partially Funded



### Recent Activity:

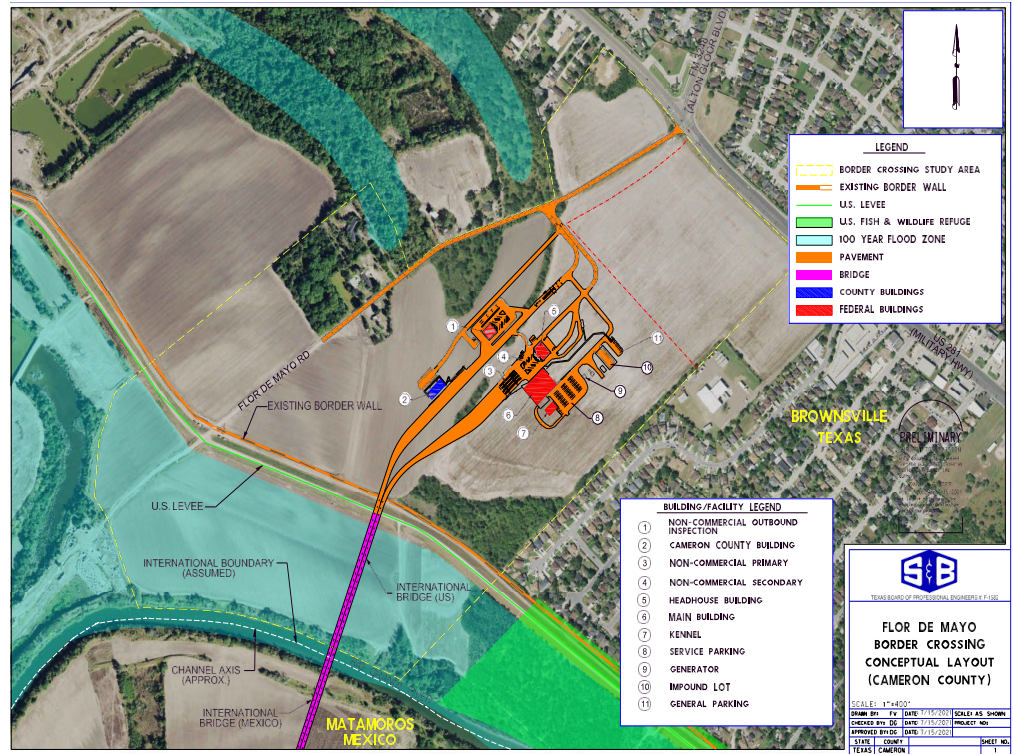
Included in Border Master Plan- High Impact Project  
Environmental Documents are 93% complete.  
USFWS Land Swap Coordination on-going  
95% PS&E to be submitted to TxDOT December 2025  
Funding: \$27 Million available  
Construction Cost Estimate: \$185,000,000  
Functionally Classified 04/2025  
ROW Acquisition Services scheduled to begin early Spring 2026





# Flor de Mayo Bridge

The proposed project in west Brownville will be a passenger vehicle only (POE) and pedestrian bridge located 8 River Miles upstream from the existing Brownsville and Matamoros International Bridge and 35.6 river miles downstream from the County owned Free Trade Bridge at Los Indios. The proposed border station will be located within the 173 acres of land presently owned by Cameron County. The County plans to coordinate the construction of the international bridge and facilities through the Cameron County Regional Mobility Authority.



# Flor de Mayo Bridge

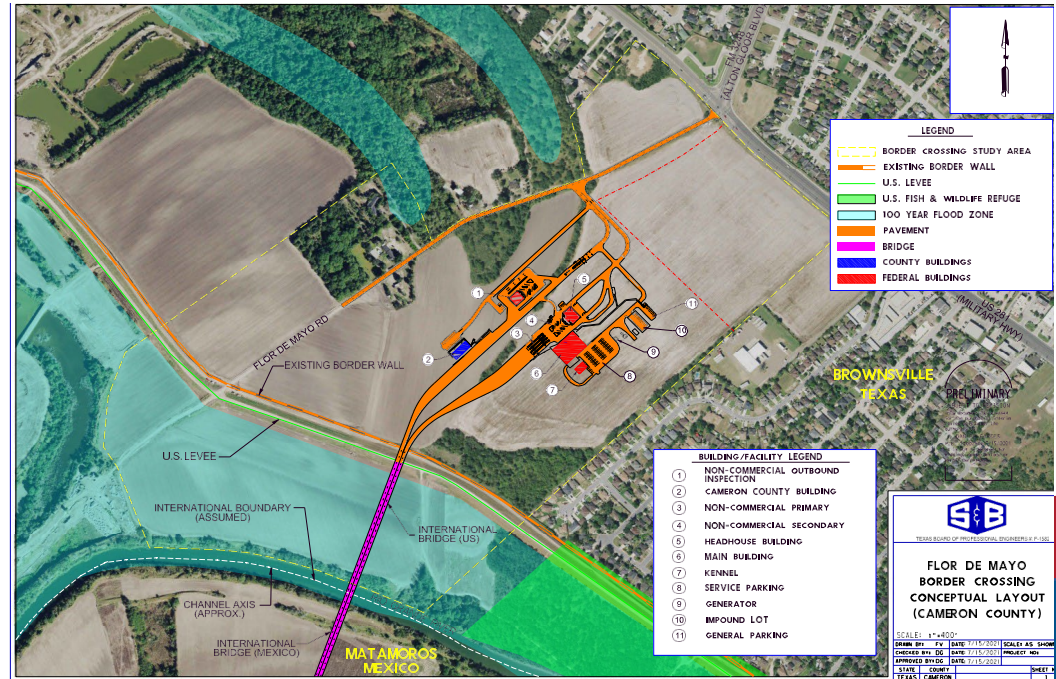
**Environmental** Underway

**Preliminary Engineering** Underway

**ROW & Utilities** 

**Design** Pending

**Funding** Underway



## Recent Activity:

Included in Border Master Plan- High Impact Project  
Feasibility study Complete

President Biden approved the Presidential Permit on May 31, 2024

Preliminary Engineering and Environmental Activities underway

Coordination outreach with CBP, USIBWC, and GSA initiated

Awaiting Meeting with US Coast Guard

Project submitted to RGVMO for consideration on the MTP



# Old Alice Rd

## CSJ: 0921-06-290 & 0921-06-378

The proposed improvements are to reconstruct and widen the existing roadway to provide for a paved four lane urban roadway with shoulders, continuous left turn lane, and sidewalks within the existing right-of-way. The right of way is in place, design is completed, and the project will be environmentally cleared by February 2026.





# Old Alice Rd

## CSJ: 0921-06-290 & 0921-06-378

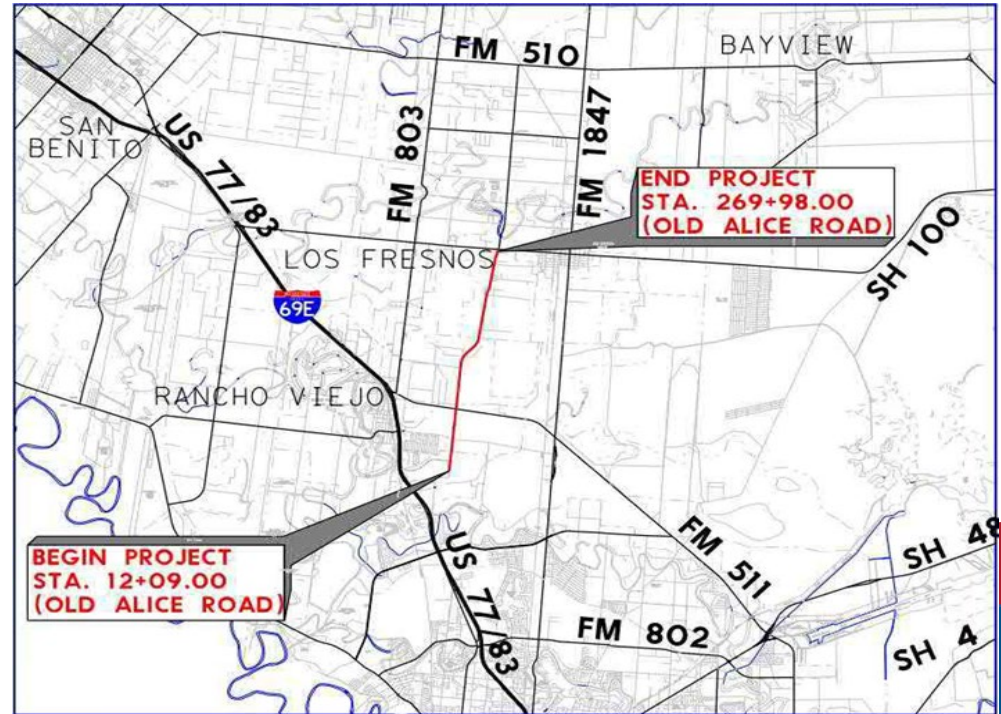
**Environmental** 99% Complete

**Preliminary Engineering** ✓

**ROW & Utilities** ✓

**Design** ✓

**Funding** ✓



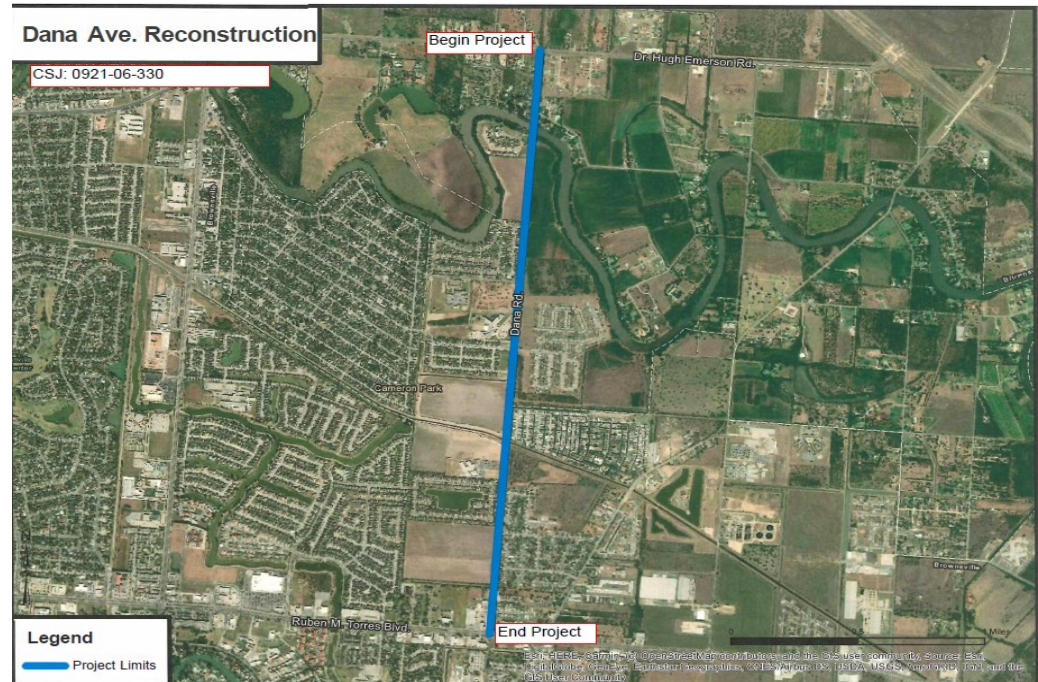
### Recent Activity:

Included in Border Master Plan- Medium Impact Project  
100% PS&E complete, revised to joint bid a waterline relocation  
Virtual Public Meeting Held August 11, 2020  
ROW 100% in place  
Funding: \$35.4 Million Available in CAT 7 and Cat 9 Funds  
Construction Cost Estimate: \$34,665,879.75  
Projected Letting FY26

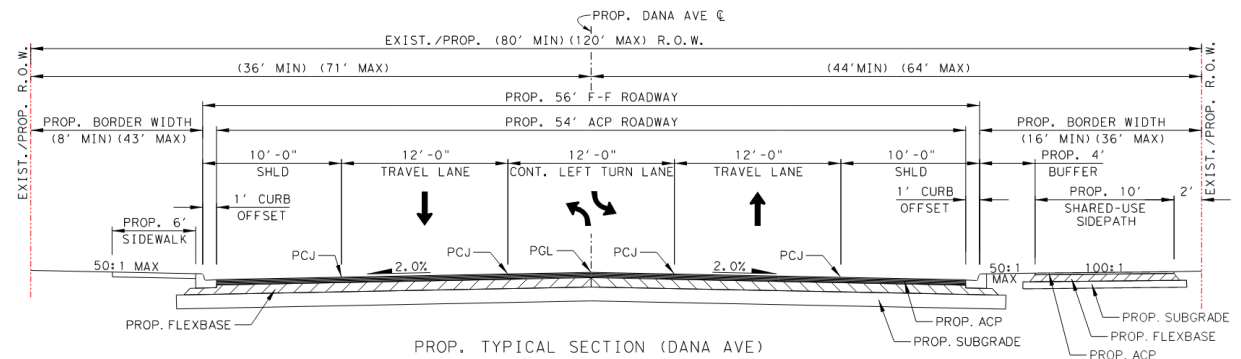
# Dana Avenue

## CSJ: 0921-06-330

This project consists of expanding a two-lane road to a two-lane road with a continuous left turn lane and full shoulders. The project will require some additional right-of-way. The project will connect FM 802 and FM 3248.



## PROPOSED TYPICAL SECTION (DANA AVE)



# Dana Avenue

## CSJ: 0921-06-330

Environmental



Preliminary Engineering

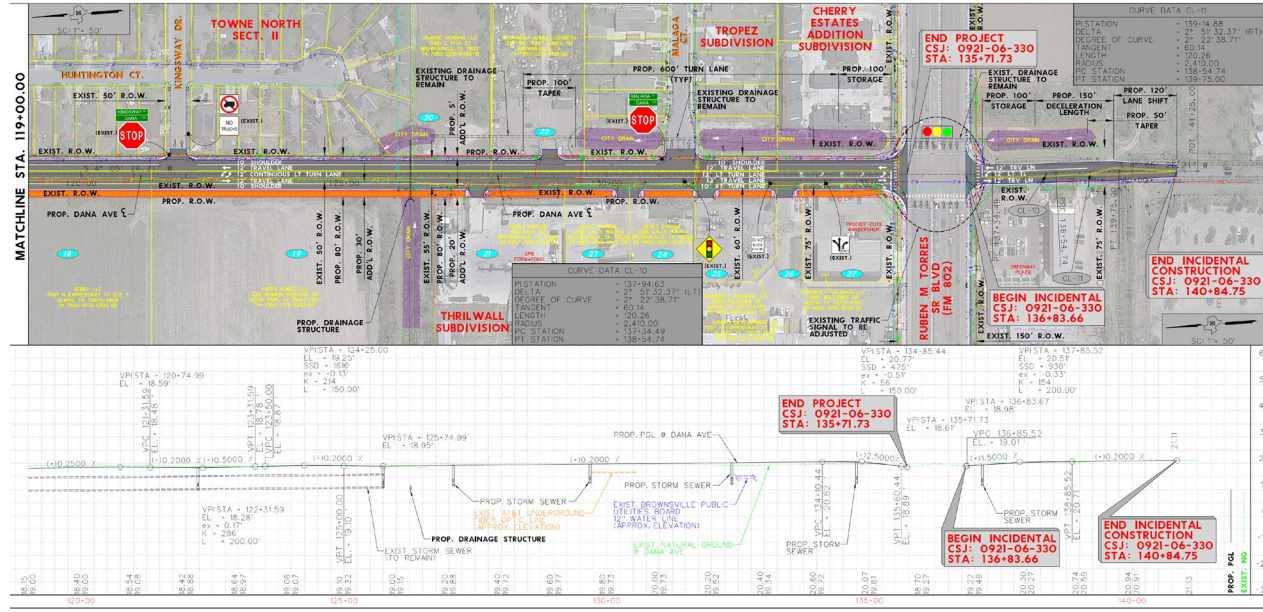


ROW & Utilities Ongoing

Design

60%

Funding



### Recent Activity:

Includes Dana Avenue Bridge Rehabilitation  
 Funding: \$16 Million Available in CAT 7 for Construction  
 Construction Cost Estimate: \$21,788,045  
 Environmentally Cleared 02/11/2025  
 PS&E 60% to be submitted to TxDOT by December 2025  
 22 parcel sketches, appraisals and review appraisals completed  
 ROW acquisition documents underway  
 Estimated Letting Date: April 2027

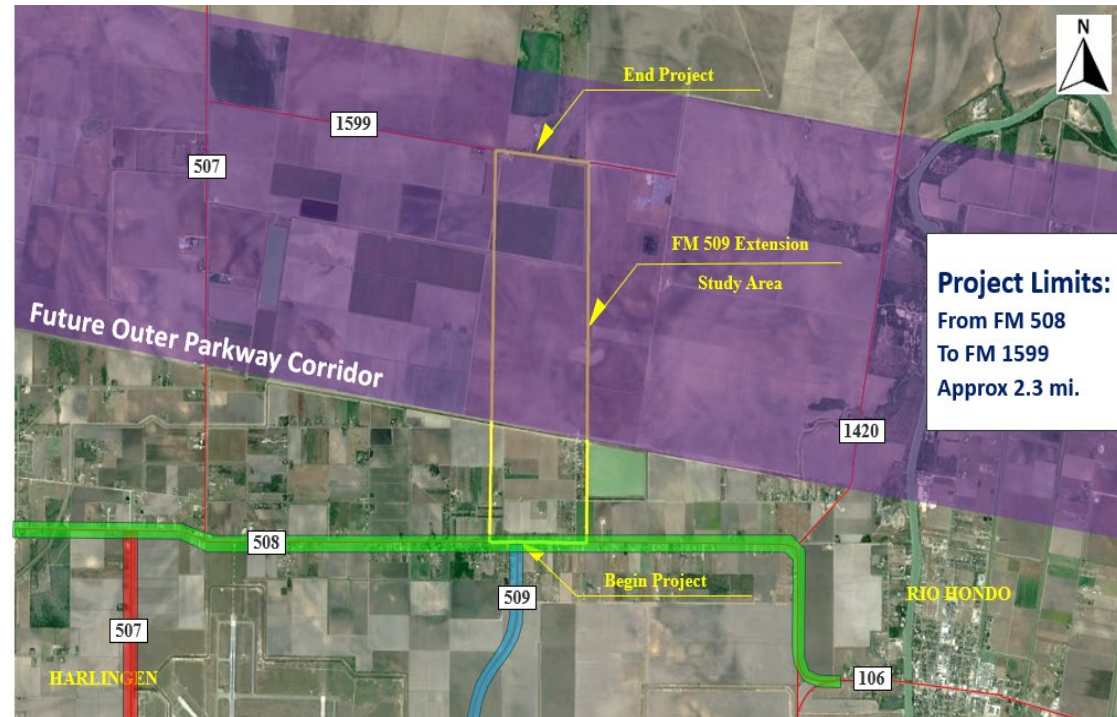




# FM 509

## CSJ: 0921-06-254

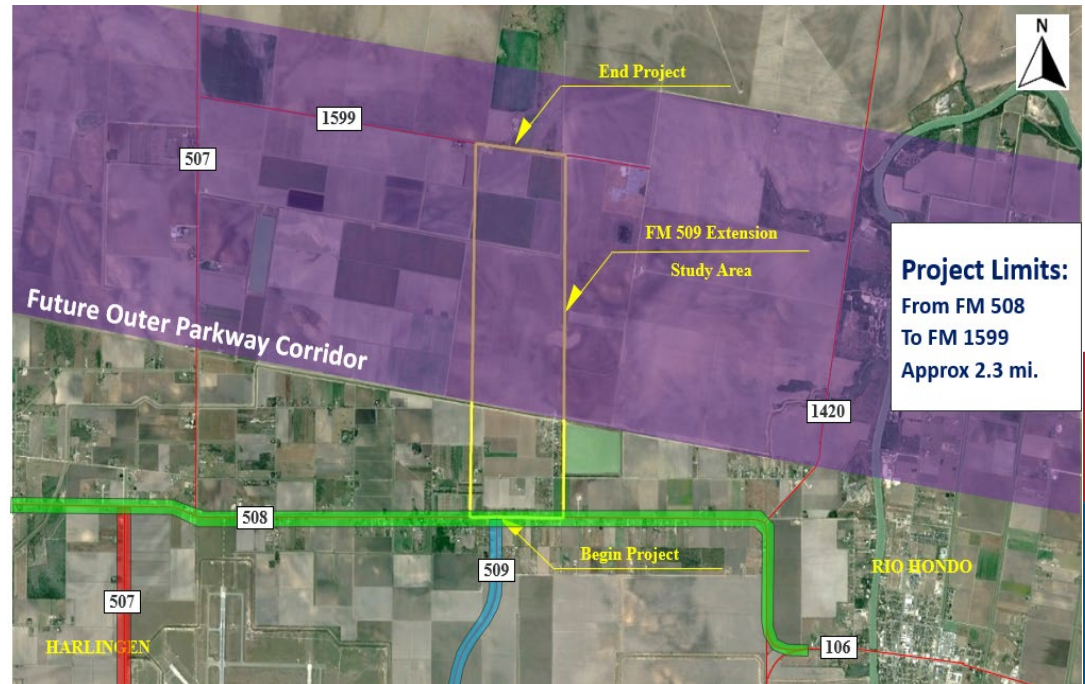
FM 509 will be constructed to add new four lane divided highway from FM 508/FM 509 intersection to FM 1599. The Project will be approximately 3 miles. Efforts are currently being made to incorporate alignments with the Outer Parkway Project.



# FM 509

## CSJ: 0921-06-254

Environmental	Ongoing
Preliminary Engineering	Ongoing
ROW & Utilities	Pending
Design	Pending
Funding	✓



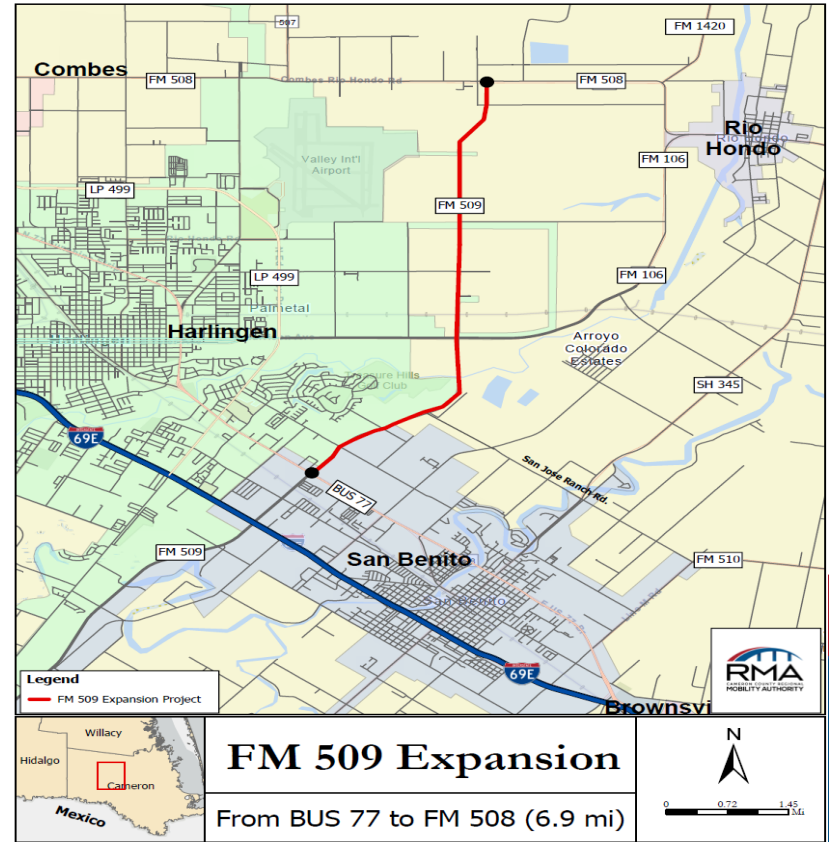
### Recent Activity:

Included in Border Master Plan- Medium Impact Project  
Transportation Commission Approved On-System MO May 2021  
CCRMA will utilize 100% Local Funds for Preliminary Engineering  
Funding: \$7.5 Million Available in CAT 2 Funds  
NEPA Clearance: Open Ended D-CE resubmitted May 2024  
DCC Meeting held 09/13/24  
Traffic Projections Approved 04/2025  
Construction Cost Estimate: \$11,344,525  
Notice and Opportunity to Comment (NOC) period ended 1/31/25

# FM 509- BUS 77- FM 508

## CSJ: 2369-01-033

The FM 509 project will widen and reconstruct the existing 2 lane rural roadway to an urban four lane roadway with a center left turn lane and shoulders, within the existing ROW. The project length is 6.85 miles.





# FM 509- BUS 77- FM 508

## CSJ: 2369-01-033

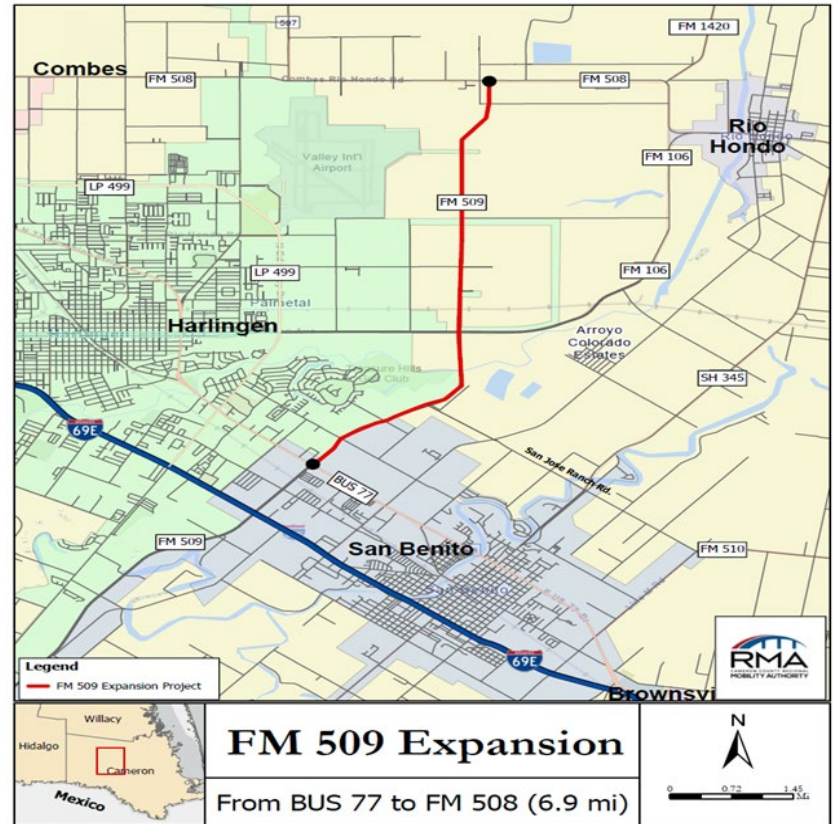
**Environmental** Pending

**Preliminary Engineering** Pending

**ROW & Utilities** Pending

**Design** Pending

**Funding** Partially  
Funded



### Recent Activity:

2026 UTP approved \$500,000 in CAT 2 funds  
Construction Cost Estimate: \$26,880,000  
Need Donation Agreement with TxDOT



# FM 1846- Williams Road-North

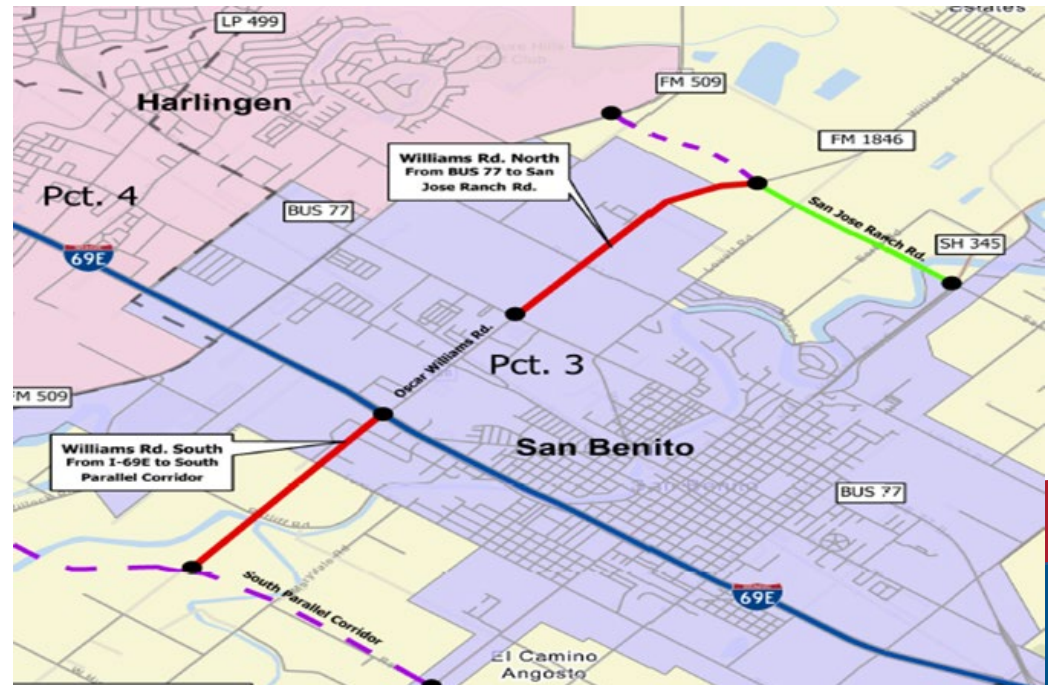
## CSJ: 1065-02-042

### Williams Road (North)

This project consists of an expansion from 2 lanes to 4 lanes with a continuous left turn lane. Project limits are from Business 77 to San Jose Ranch Road in San Benito.

### Williams Road (South)

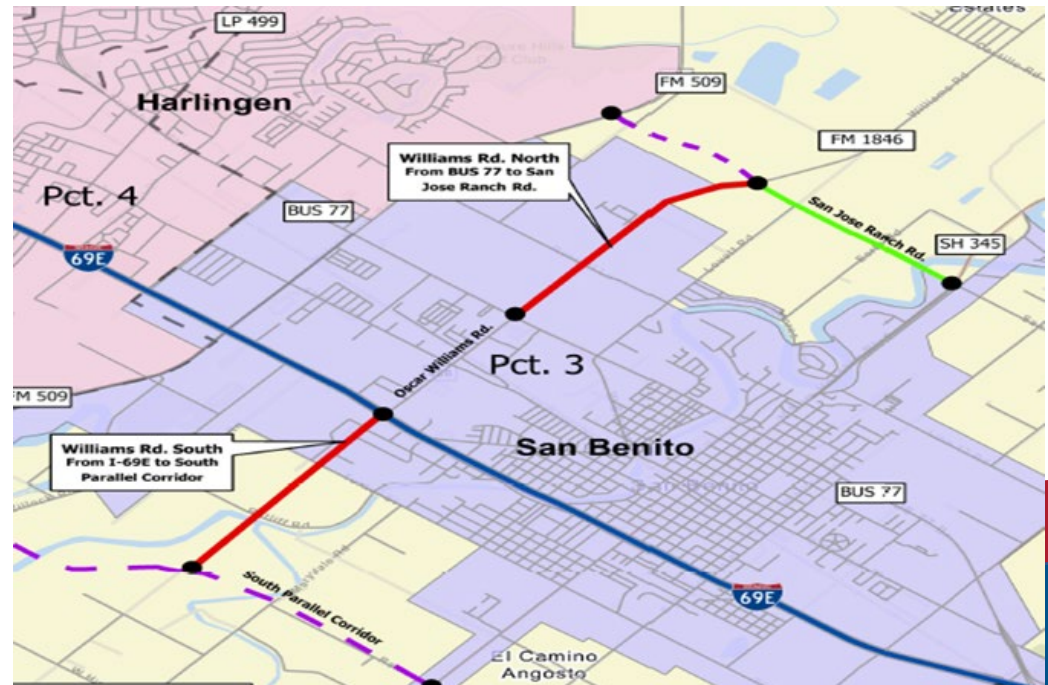
This project consists of a new location road on the south side of I-69E to South Parallel corridor in San Benito. The project will require the acquisition of right of way.



# FM 1846- Williams Road-North

## CSJ: 1065-02-042

Environmental	35%
Preliminary Engineering	Schematic 90%
ROW & Utilities	Pending
Design	Pending
Funding	Pending



### Recent Activity:

ILA with City of San Benito and Cameron County approved  
\$500,000 in Category 2 Funds  
Schematic-80% complete  
AFA approved on 01/10/24  
Traffic projection (Corridor Analysis) Submitted 02/19/24  
Kick off and Env. Scoping Meetings held 04/15/24  
DCC held 05/10/24  
Final Schematic Submittal to be submitted April 2026  
Estimated Environmental Clearance: September 2026





# SH 104

**SECOND ACCESS PROJECT  
TO SOUTH PADRE ISLAND  
CSJ: 0775-02-002**

SH 104 (Second Access Project to South Padre Island) will involve a second crossing on a new location to South Padre Island to provide a much-needed alternate route from the island to the mainland. The second causeway also would facilitate evacuation of South Padre Island in the event of a hurricane or other natural disaster. The project will include a bridge approximately 8 miles long as well as improvements to roadways on the mainland and on the Island. The total length of the SH 104 Project is approximately 17.6 miles.



**The Texas Transportation Commission placed the project on-system  
on December 12, 2023 through Minute Order 116614.**

# SH 104

## SECOND ACCESS PROJECT TO SOUTH PADRE ISLAND

CSJ: 0775-02-002

**Environmental** Underway

**Preliminary  
Engineering** 90%

**ROW & Utilities** Underway

**Design** Underway

**Funding** Underway

### Project Needs:

Complete Supplemental EIS  
Design  
Funding

### Recent Activity:

Included in Border Master Plan- Medium Impact Project  
Using Local Funds to Complete Project Schematic  
Coordination with Resource Agencies including: FHWA, TxDOT,  
USFWS, TPWD, USACE, USDA, NOAA, EPA, FEMA, GLO, TCEQ,  
TX Railroad Commission, Texas DEM, THC, Sea Turtle Inc.  
Weekly & offline coordination meetings held between TxDOT ENV & CCRMA  
TxDOT Managing Environmental Phase  
CCRMA Managing Traffic Projections and Schematic  
90% schematic submitted to TxDOT 08/29/25



# Harlingen Rail Improvements Project

## FR-CSR-21-002

The Harlingen Commerce Street rail relocation project will relocate and realign 1.7 miles of track and construct one new crossing at Commerce Street to eliminate seven existing grade crossings in the City of Harlingen, Texas. The new track connection will enable the Union Pacific Railroad (UPRR) Harlingen Subdivision track to connect to the UPRR Brownsville Subdivision, as well as straighten out two curves and plans to safely raise the speed from 10 MPH to 30 MPH to minimize rail congestion through this area.





# Harlingen Rail Improvements Project

## FR-CSR-21-002

Environmental	70%
Preliminary Engineering	25%
ROW & Utilities	✓
Design	Pending Schem. Approval by FRA
Funding	✓



### Recent Activity:

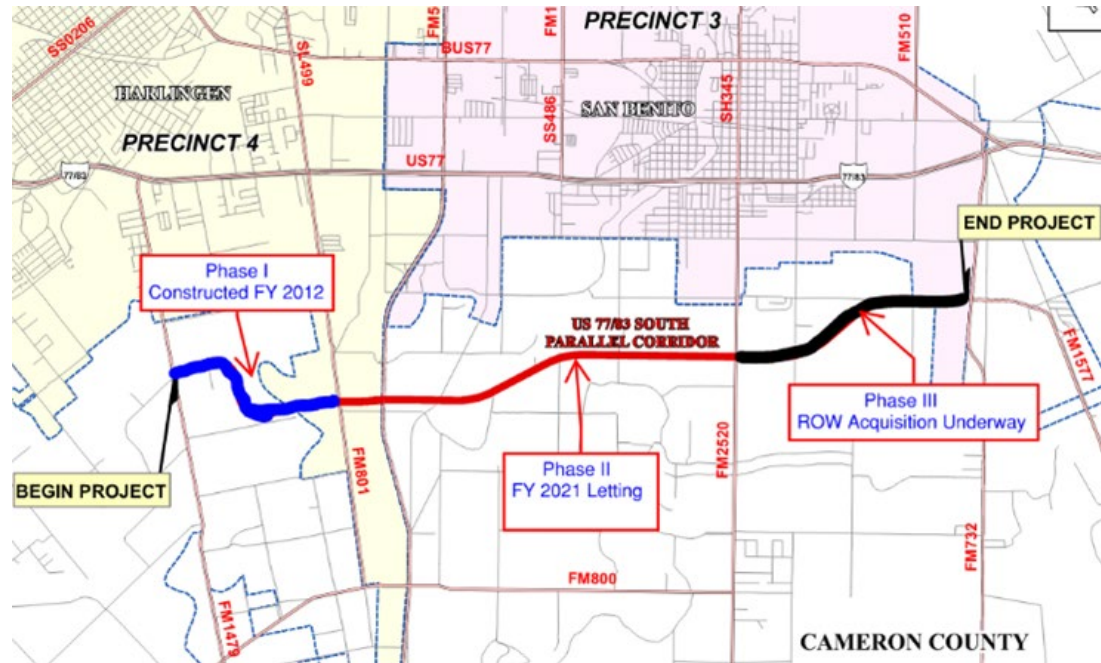
Partnership between: CCRMA & Cameron County  
Project Scope: Eliminate certain railroad-street crossings  
Limits: N. Commerce street S. of US 77 Sunshine to Adams Avenue  
Using Federal & Local funds to complete Environmental Phase  
Using Federal & Local funds to complete Design  
Funding: \$5.6 Million Available for Construction  
FRA Agreement for Phase I – executed, started March 01, 2024  
Agreement with UPRR executed December 2022  
Prelim. Engineering site visit March 2024 / Diagnostic site visit December 2024  
30% schematic Sept 2025 and CE ENV Clearance Est. 12/2025



# S. Parallel Corridor Phase III

## CSJ: 0921-06-257

Project limits are from FM 2520 (Sam Houston Blvd) to FM 1577. Partially on new location with intermittent existing 40-80 ft ROW. Construction of a 2-lane rural roadway. Phase III will complete the South Parallel Corridor project.



# S. Parallel Corridor Phase III

## CSJ: 0921-06-257

Environmental



Preliminary  
Engineering



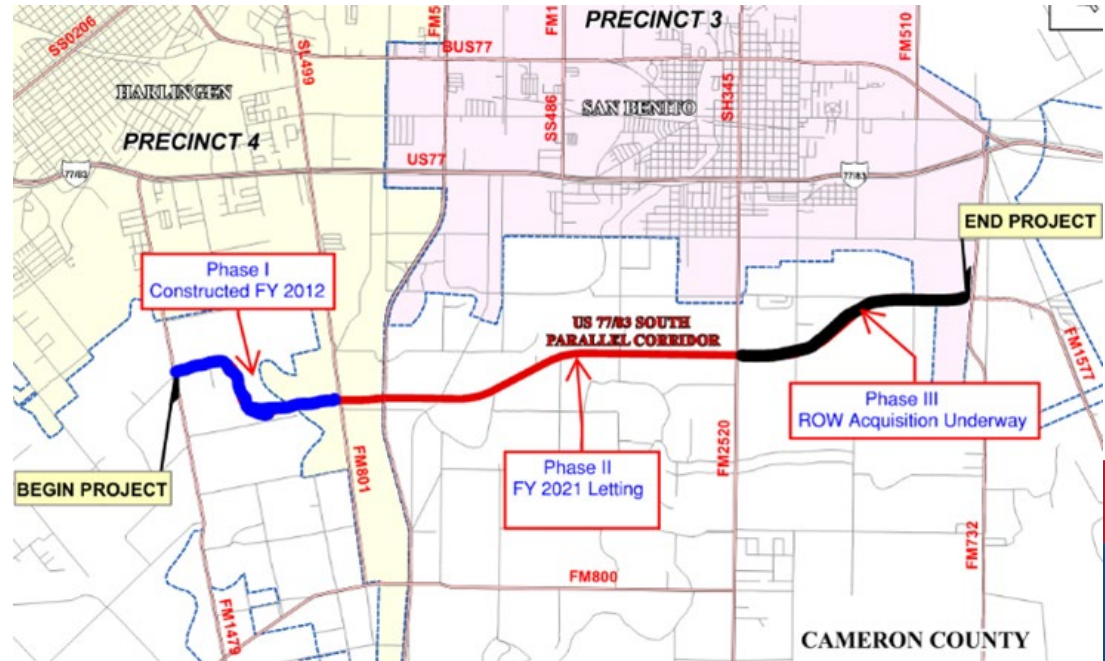
ROW & Utilities

98%

Design



Funding



### Recent Activity:

Included in Border Master Plan- Medium Impact Project  
ROW Acquisition Underway using Local Funds (complete)  
Utility Coordination Underway using Local Funds (1 remains)  
Funding: \$6.765 Million Available in CAT 7 Funds – \$5M in Rider 11B  
Construction Cost Estimate: \$11,100,578.74  
Projected Letting FY26  
100% PS&E submitted to TxDOT on 11/2025

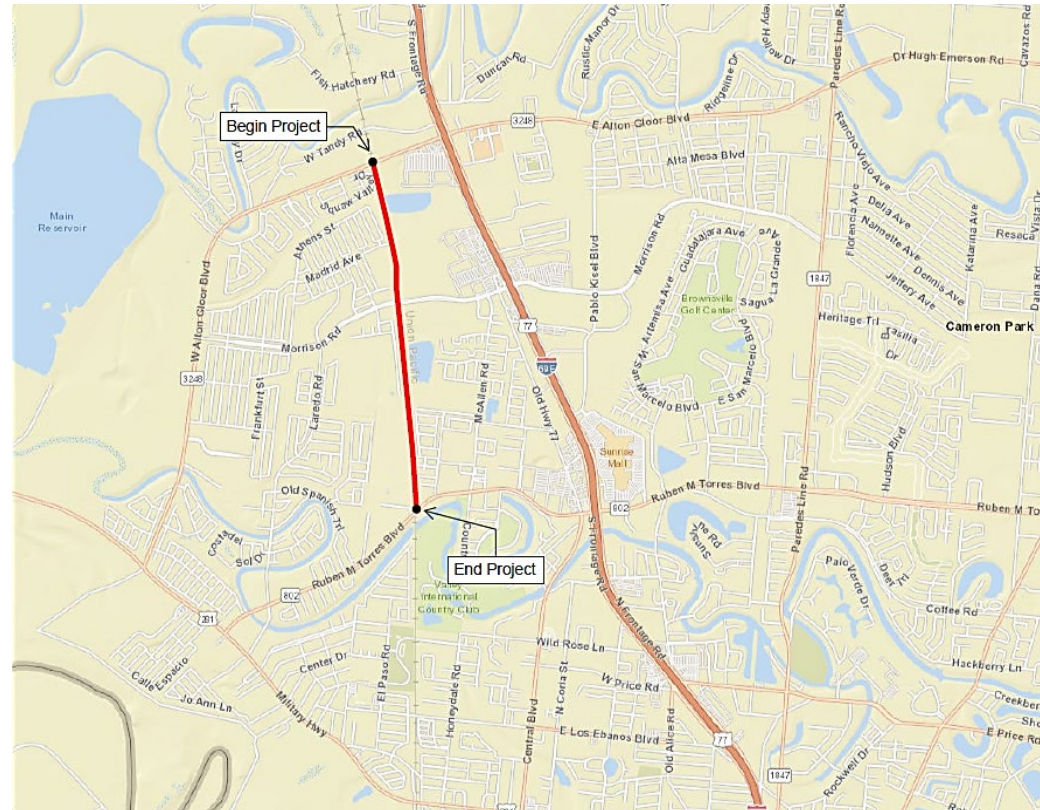




# West Blvd Roadway

## CSJ: 0921-06-340

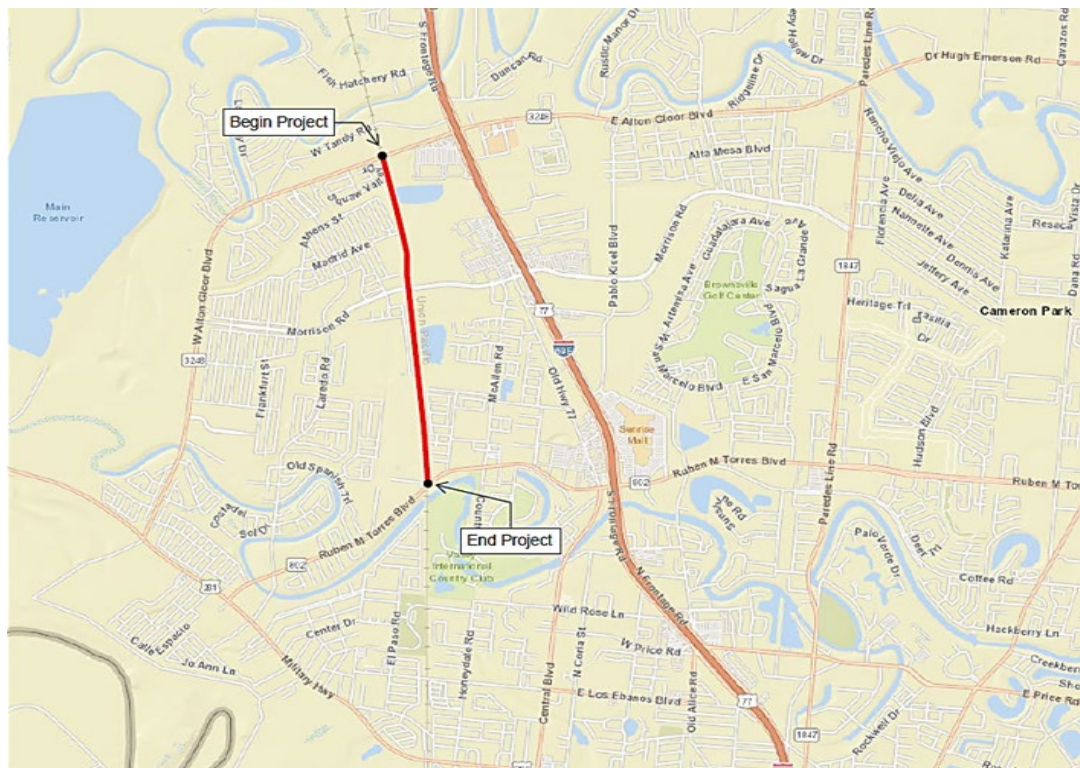
As a component of the 6.5-mile West Rail Trail project, the Roadway component is being developed to provide a connection between two on-system TxDOT arterial roadways and improve the safety and quality of life for local residents by reducing congestion and eliminating travel time delays for first responder personnel and residents during an emergency to highly developed areas along the project. The proposed urban roadway section would accommodate the Hike and Bike trail and provide for improved mobility between FM 802 (Ruben Torres Blvd) and FM 3248 (Alton Gloor Blvd) two major arterials in the region.



# West Blvd Roadway

## CSJ: 0921-06-340

Environmental	90%
Preliminary Engineering	✓
ROW & Utilities	✓
Design	95%
Funding	Partially Funded



### Recent Activity:

PS&E is being completed with 100% Local Funds  
Functional Classification received June 2023  
ROW is in place  
PS&E-95% complete  
AFA Approved by CCRMA Board 05/30/24  
Project Kickoff conducted 09/2024  
Ongoing PE Efforts: CE NEPA docs and Traffic Projections  
Construction Cost Estimate: \$11,240,283  
Projected Letting FY26-27  
Notice and Opportunity to Comment (NOC) period ended 8/1/25



# U.S. 281 Connector

The project will provide a divided urban corridor that would improve mobility and safety between U.S. 281 (Military Highway), I69E, and SH 100. This route will become critical as trade increases in the region between the port and international bridges. The U.S. 281 Connector Project is approximately 7.5 miles long.





# U.S. 281 Connector

**Environmental** Underway

---

**Preliminary Engineering** Underway

---

**ROW & Utilities** Pending

---

**Design** Pending

---

**Funding** Pending



## Recent Activity:

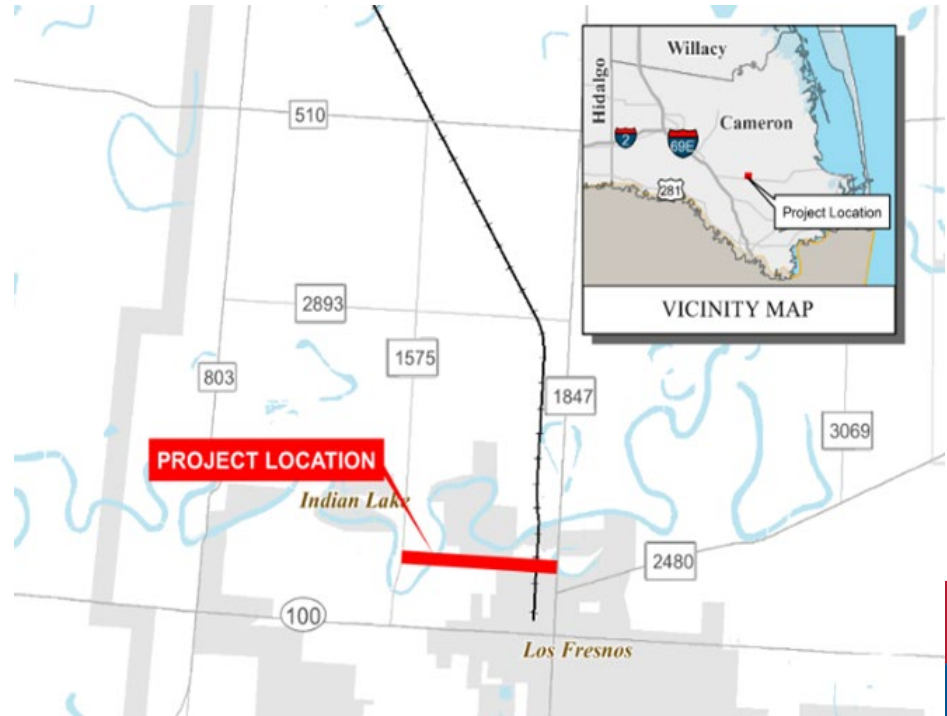
Included in Border Master Plan- Medium Impact Project  
CCRMA Conceptual Project to provide a connection between  
US281 (Military Highway) and I69E.  
Ultimately connecting the International Bridges  
Directly with the Port of Brownsville Via SH 550  
Kickoff Meeting conducted 09/2024



# Whipple Road

## CSJ: 0921-06-292

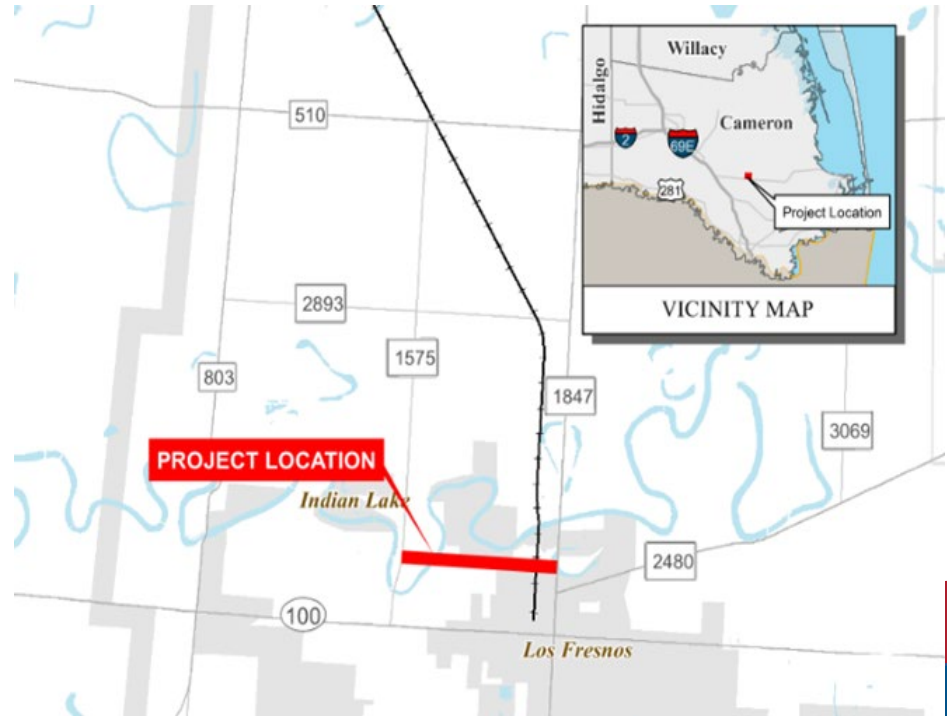
This project involves the expansion of the existing road in Los Fresnos. This road will be improved from FM 1847 to FM 1575. The right-of-way is in place to do the necessary improvements



# Whipple Road

## CSJ: 0921-06-292

<b>Environmental</b>	85%
<b>Preliminary Engineering</b>	Schematic 95%
<b>ROW &amp; Utilities</b>	Ongoing
<b>Design</b>	60%
<b>Funding</b>	Pending



### Recent Activity:

Schematics at 95%  
Environmental at 85%  
Funding: \$4.5 Million Available in CAT 7 Funds  
Public Involvement completed January 06, 2023  
Construction Cost Estimate: \$8,345,789  
Amended AFA 06/2024  
Traffic Projections Approved 03/2025  
60% PS&E to be submitted to TxDOT on 12/2025





# Outer Parkway

## CSJ: 0921-06-283

The Outer Parkway Project is approximately 21.5 miles long and includes the construction of a new four lane divided highway from I69E (U.S. 77) near the North Cameron County Line to FM 1847. The project will link the General Brant Road Project with I69E (U.S. 77).



# Outer Parkway

## CSJ: 0921-06-283

**Environmental** Ongoing

---

**Preliminary Engineering** Ongoing

---

**ROW & Utilities** Pending

---

**Design** Pending

---

**Funding** Pending



### Recent Activity:

Cameron County / CCRMA entered into an ILA for PE/Env Clearance on 02/2023.

TxDOT ENV concurred with continuing to classify the project as an Environmental Assessment document.

Technical Preferred Alternative selection underway

Construction Cost Estimate: \$345,902,823

Associated Traffic Projections submitted 04/21/25 (responded to comments on 5/20/25)

Notice and Opportunity to Comment (NOC) period ended 6/16/25



# Gateway Pedestrian Bridge-Riverfront Development

Cameron County is the owner-operator of the Gateway International Bridge, which crosses the famous Rio Grande River, connecting Cameron County to downtown Matamoros. The Gateway Bridge is in the reach of the River that has served for centuries as our primary connection of commerce and culture with Matamoros and other communities throughout Texas and Tamaulipas.

Through an Interlocal Agreement, Cameron County engaged its Cameron County Regional Mobility Authority (CCRMA) and Cameron County Transportation Reinvestment Zone Number 6 (TRZ #6) to oversee the development, construction and financing of the remodel and associated riverfront redevelopment. The CCRMA submitted a Presidential Permit Application for Gateway Bridge on 12/17/2024 **that was approved on 8/20/2025.**

## Recent Activity:

- CCRMA GEC is currently working on County/local facilities / tie-ins to this project.
- Identified environmental constraints for the project.
- Field surveying currently ongoing and flight done.
- Survey submittal to be received by December 2025.
- Environmental Documentation estimated completion May 2026.

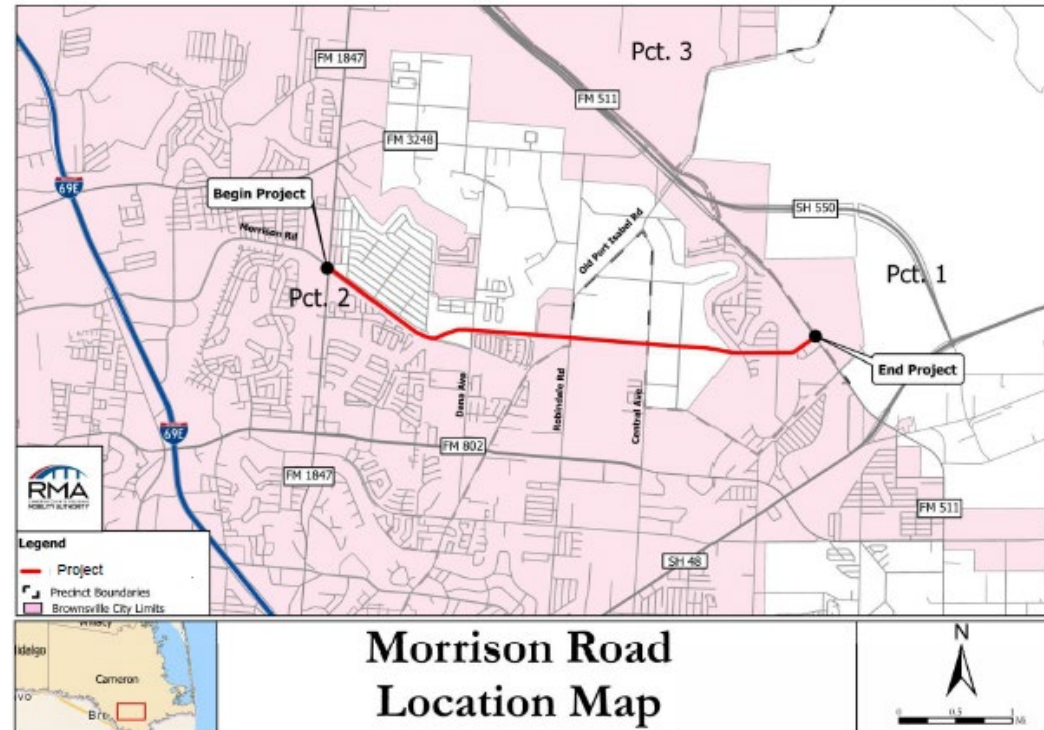




# Morrison Road

## CSJ: 0921-06-291

This is a new location road from FM 1847 to FM 511. When complete, Morrison Road will go from FM 3248 to FM 511. This project will provide connectivity to a large retail area in Brownsville and reduce congestion on several major roads.



# Morrison Road

## CSJ: 0921-06-291

**Environmental** Underway

**Preliminary Engineering** Underway

**ROW & Utilities** Pending

**Design** Pending

**Funding** 



### Recent Activity:

Included in Border Master Plan- High Impact Project  
Environmental and Schematic are under development

Preliminary Coordination with City and  
Drainage District Underway

Functional Classification Received for Segment I on 04/04/24

CCRMA to request FC for Segment II of the Project

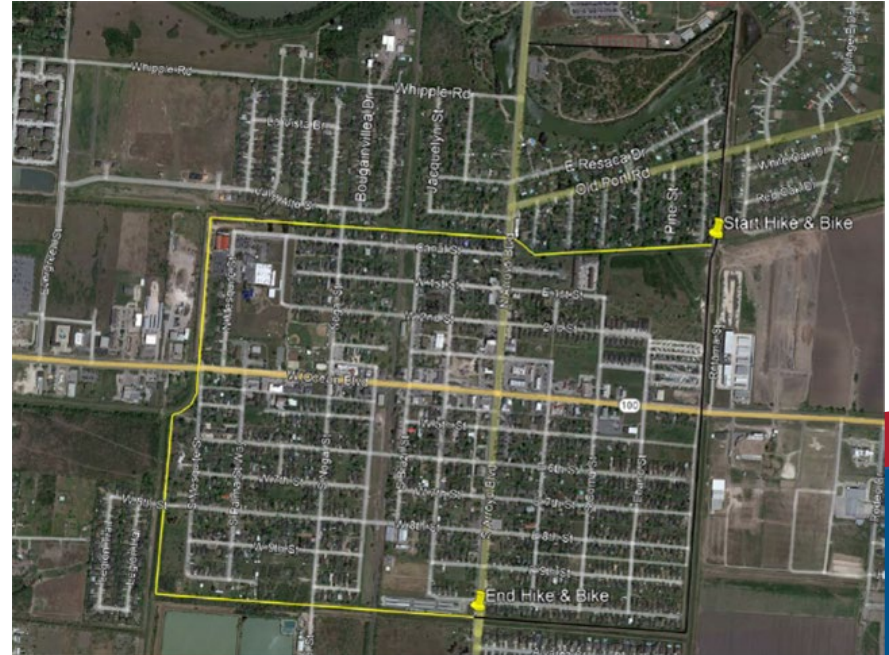
Funding: \$16 Million Available in FY25 UTP excess availability of CAT 7 Funds

Construction Cost Estimate (full limits): \$35,913,576.46

# Los Fresnos Hike & Bike Trail

## CSJ: 0921-06-334

Continuation of the construction of a 2.1-mile asphalt shared use path around the City of Los Fresnos from the Northeast corner to the South-Central city limits at South Arroyo Blvd. The project compliments / extends the existing hike and bike system from the Los Fresnos Nature Park that primarily utilizes canal easements to define the trail alignment.

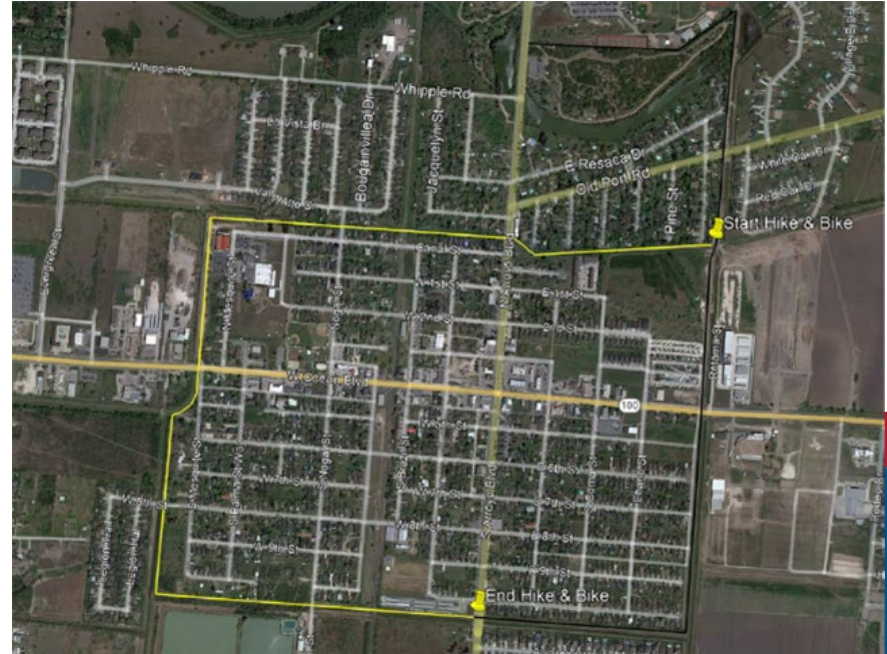




# Los Fresnos Hike & Bike Trail

## CSJ: 0921-06-334

Environmental	25%
Preliminary Engineering	30%
ROW & Utilities	Pending
Design	Pending
Funding	✓



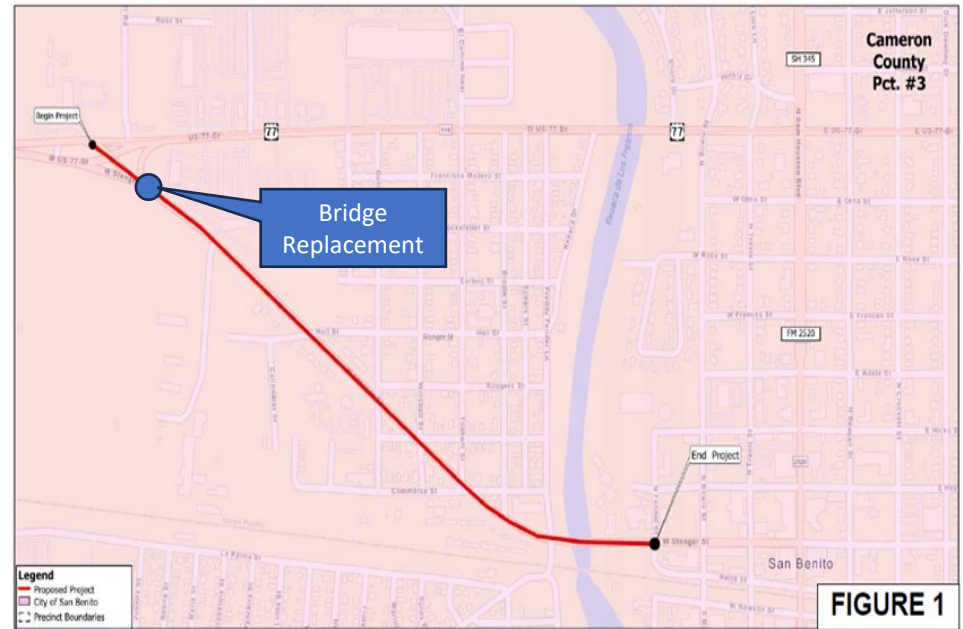
### Recent Activity:

Limits: Complete loop around City of Los Fresnos  
(from 220 ft. N. of Alvarez St., along canal to 56 ft. S. of Huisache St)  
ILA between CCRMA And COLF has been executed  
AFA executed 11/08/2024  
Environmental & PE initiated Spring 2024  
Funding: \$3,027,100 Cat 10 CRP Available  
Internal Kickoff Meeting held with COLF 09/2024  
TxDOT Kickoff meeting held 09/15/25.



# Stenger Road Sidewalk Improvements

The project consists of the construction of a 10' concrete shared used path from West BUS 77 to Fannin St. approximately 1.1 miles.



# Stenger Road Sidewalk Improvements

Environmental



Preliminary  
Engineering



ROW & Utilities



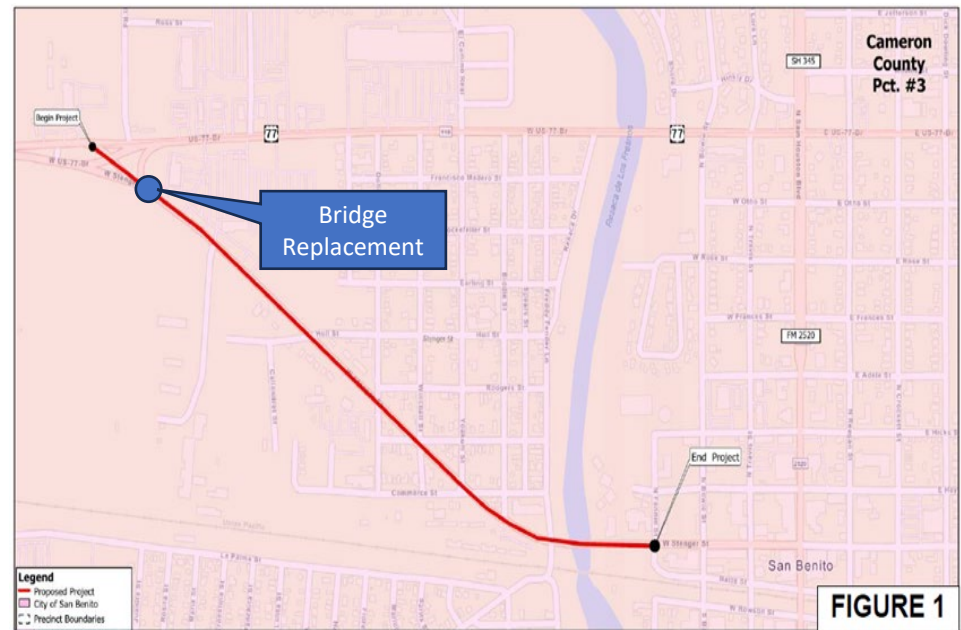
Design



Funding



Under  
Construction



## Recent Activity:

ILA w/ City of San Benito

Limits from West BUS 77 to Fannin St

Funding: \$1,750,156 Cat 10 CRP Available

Bridge Rehab Funded and to be by TxDOT- project to be a State Letting

TxDOT Area Office held a preconstruction meeting 10/10/25

Contractor Awarded: Earthworks Enterprise

Contract Amount: \$1,624,355.47





# Stuart Place Road

The project is an expansion of approximately 2.5 miles from Wilson Road to SH 107.

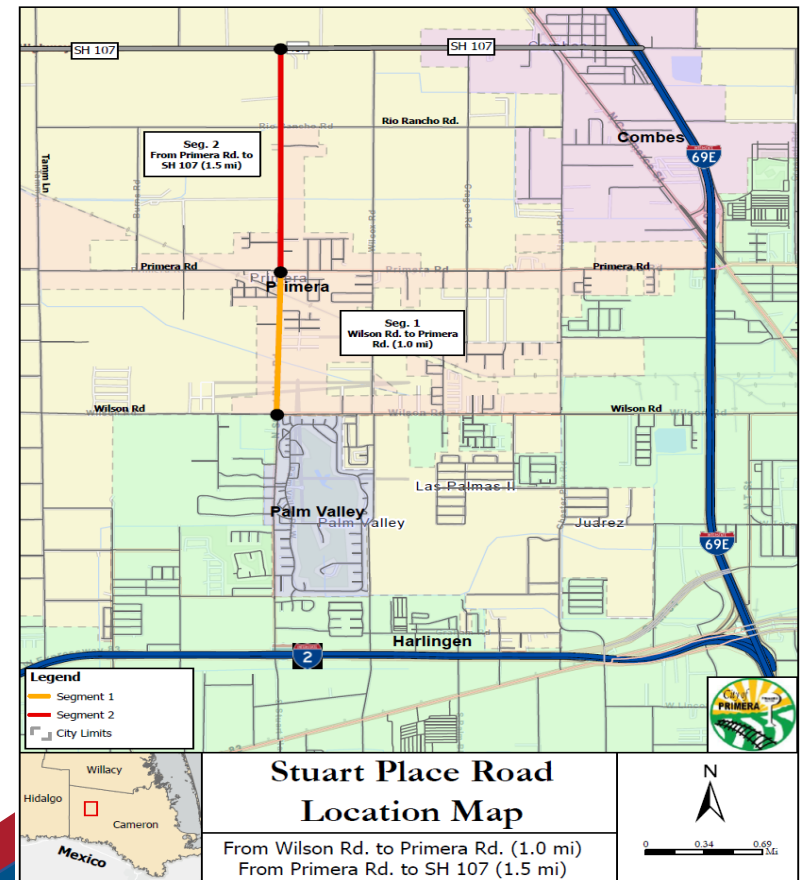
**Environmental** Pending

**Preliminary Engineering** Pending

**ROW & Utilities** Pending

**Design** Pending

**Funding** Pending



## Recent Activity:

CCRMA GEC is developing the preliminary engineering report to demonstrate the need for the added capacity.



# Pablo Kisel Boulevard

The project is approximately 1.8 miles from I-69 to FM 3248 (Alton Gloor)

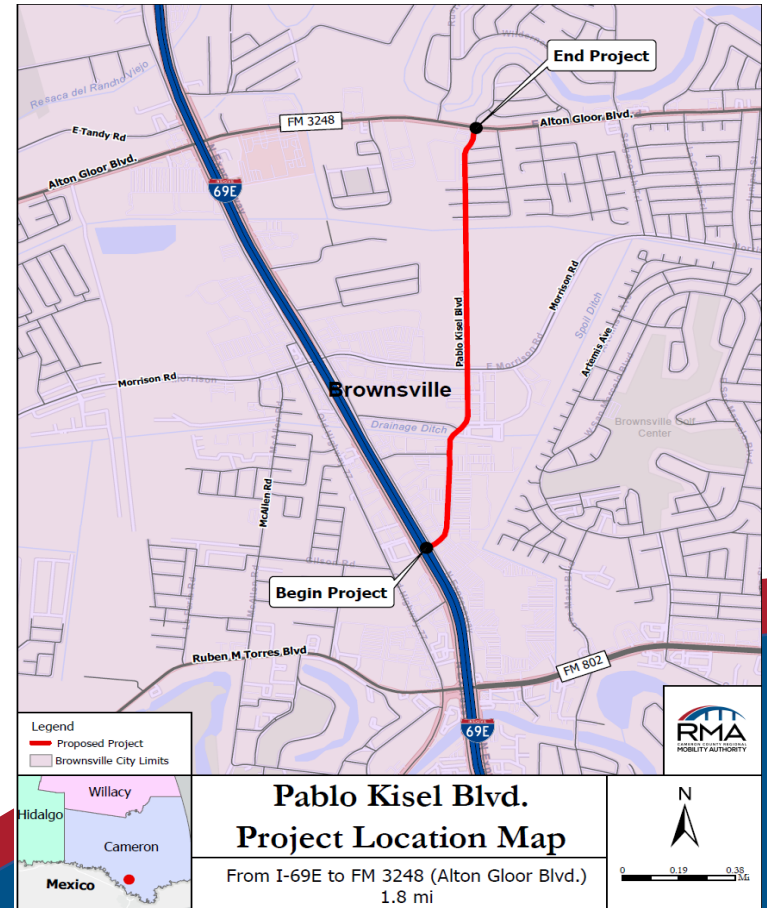
**Environmental** Pending

**Preliminary Engineering** Pending

**ROW & Utilities** Pending

**Design** Pending

**Funding** Pending



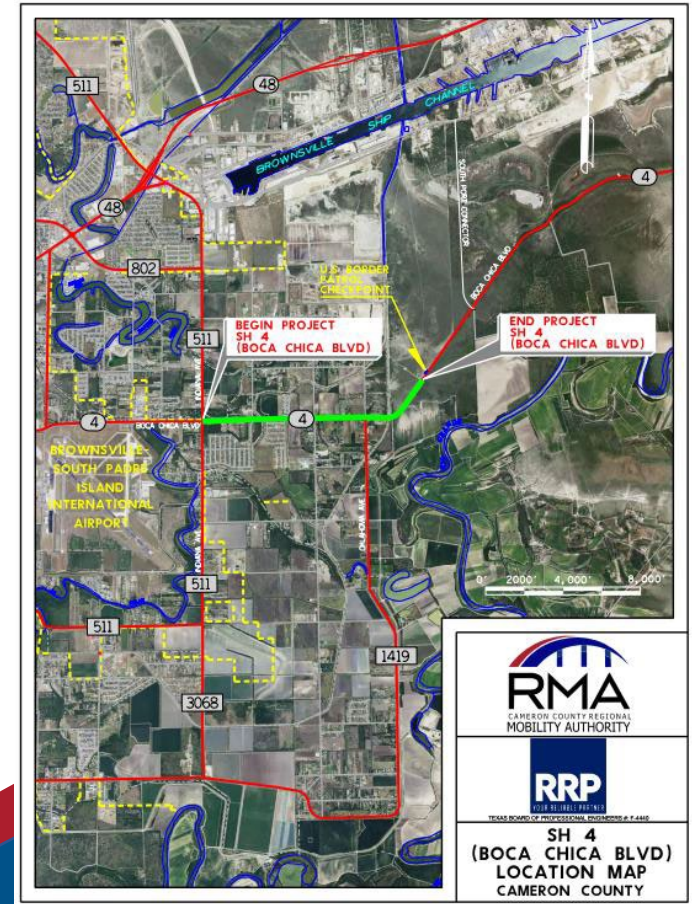
## Recent Activity:

CCRMA GEC is developing the preliminary engineering report to demonstrate the need for the added capacity.



# SH 4-FM 511 to Oklahoma

TxDOT's SH 4 project proposes to widen SH 4 ( 2,700 feet east of Oklahoma Avenue to Joanna Street) from a 2- lane roadway to a 4- lane divided roadway. This project proposes the continuation of TxDOT's project with the expansion of the four lanes from Oklahoma Road to FM 511, allowing for a natural transition and safer travel.



## Recent Activity:

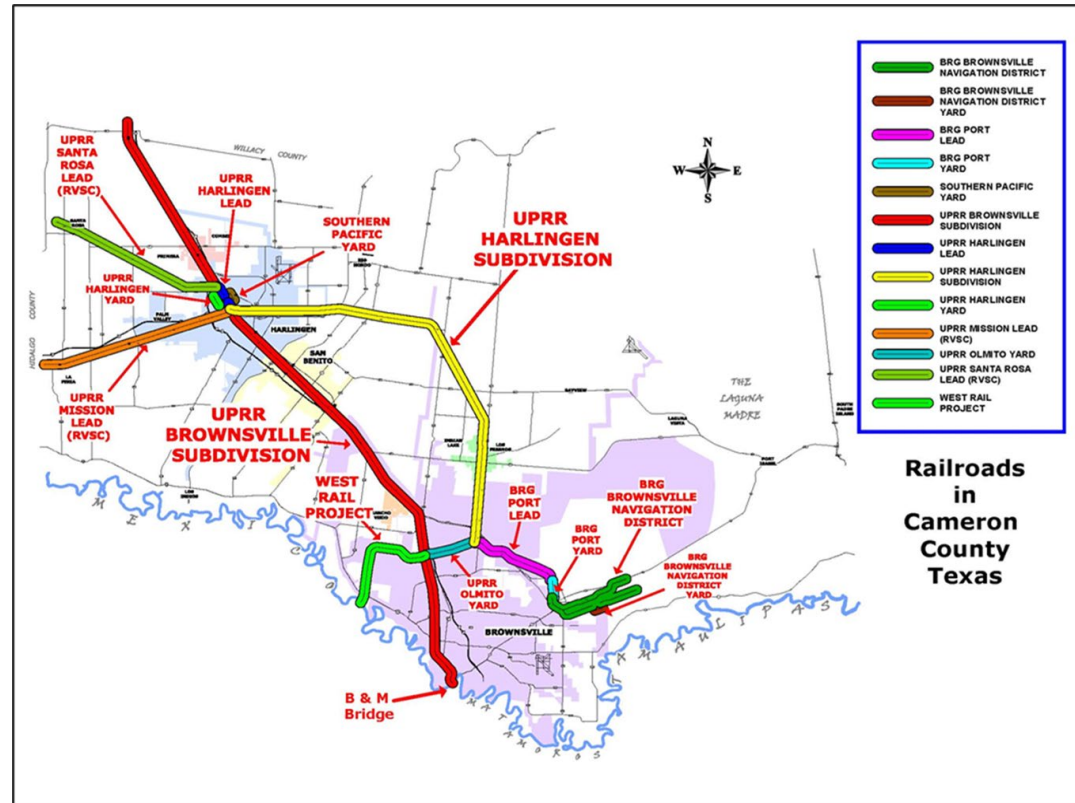
CCRMA GEC is developing the typical sections, preliminary conceptual layouts and cost estimates to demonstrate the need for the added capacity.





# North Cameron County Rail Safety and Reutilization Project (Study Update)

<b>Environmental</b>	Pending
<b>Preliminary Engineering</b>	Pending
<b>ROW &amp; Utilities</b>	Pending
<b>Design</b>	Pending
<b>Funding</b>	Pending



### Recent Activity:

The recommended rail safety and reutilization plan would:

- Eliminate 39 at-grade rail crossings.
- Eliminate 204,642 vehicles daily crossing at rail intersections.
- Remove 90,000 feet of rail trackage.
- Open 17.5 miles of 100 feet of right of way for other use.
- Provide potential for new pedestrian and bike trails.
- Opens 9 miles of access for new development along I69E.
- Cost \$25 million.



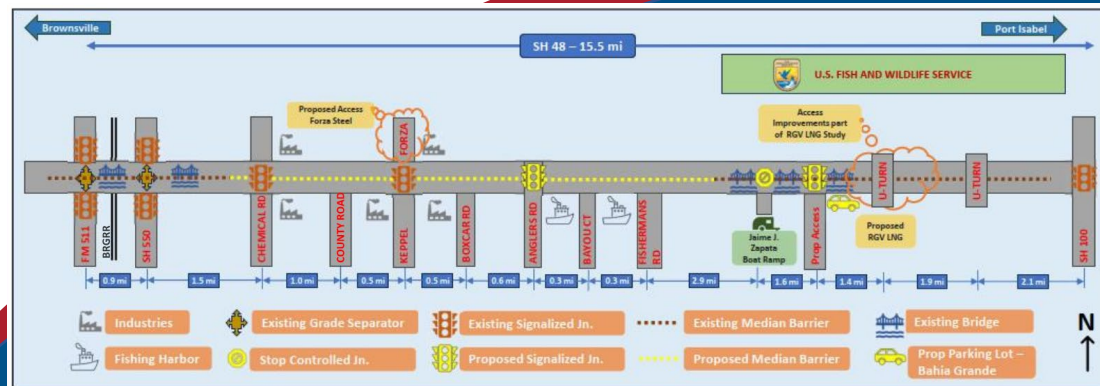
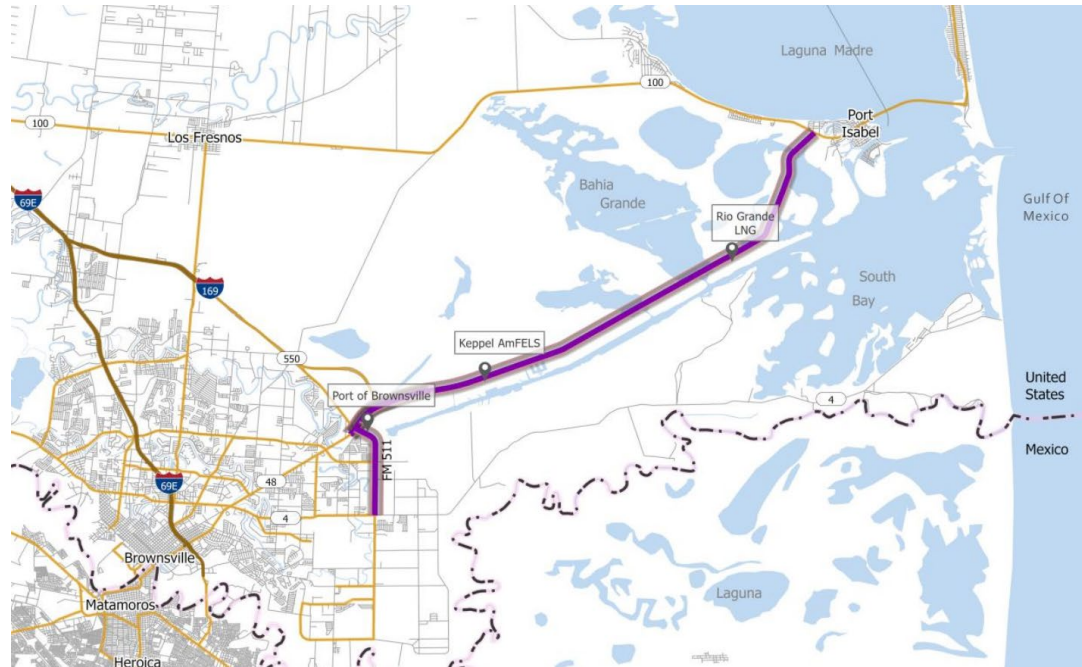
# SH 48 Master Plan

To prepare for this growth and to cater the developments, the Cameron County Regional Mobility Authority (CCRMA) is developing this Master Plan for SH 48.

It is culmination of traffic projection analysis, feasibility analysis, and meetings among stakeholder groups (Port, TxDOT, recreational groups) along SH 48, and other fieldwork efforts along I-69E, SH550 (future I-169), and SH 48.

The SH 48 corridor connects ports, harbors, and industries along recreation locations. The project corridor is expected to have significant industrial development resulting in sizable growth in employment. The new developments are currently in the planning and execution stages.

**Master plan finalized.**

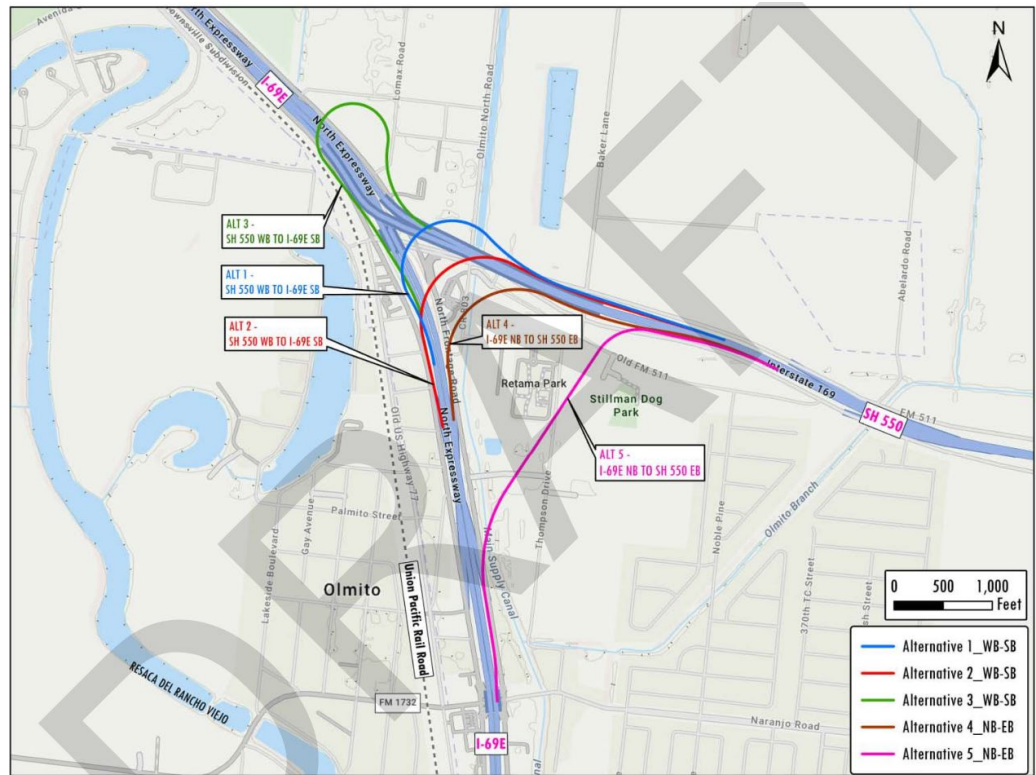


Short term recommendations include construction of cable median barrier and improvements at five Intersections (Chemical Road, Keppel AmFELS, Anglers Rd, Zapata Boat Ramp, Bahia Grande Proposed Parking)



# SH 550 DCs from Brownsville

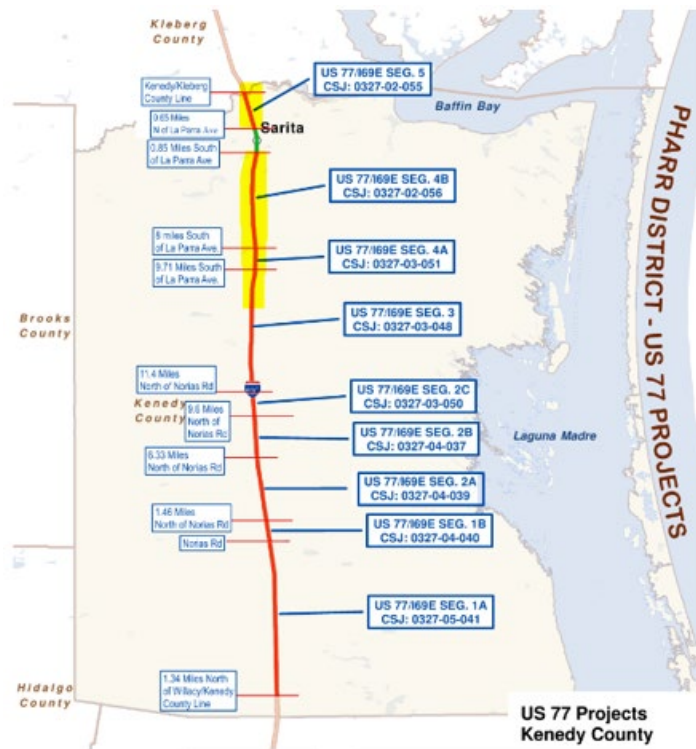
The construction of additional direct connectors between Interstate 69E (I-69E) and State Highway 550 (SH 550) is being evaluated by the Cameron County Regional Mobility Authority (CCRMA). The scope of the project is to build additional direct connector ramps from westbound SH 550 to southbound I-69E and from northbound I-69E to eastbound SH 550. The region's traffic is anticipated to grow due to the overall development of the region, including an increase in demand from the Port of Brownsville area and the other planned projects nearby.





# U.S. 77 – I69E Plan

## TxDOT - 2026 UTP



CSJ	Limits	FY	Funding Status	Funding Amount
0327-05-041 Seg. 1A	Norias Rd to 1.34 MI N of Willacy/Kenedy CL	2024	Fully funded	\$214,518,354
0327-04-040 Seg. 1B	1.46 MI N of Norias Rd to Norias Rd	2024	Fully funded	\$31,033,192
0327-04-039 Seg. 2A	6.33 MI N of Noria Rd to 1.46 MI N of Norias Rd	2024	Fully funded	\$100,100,488
0327-04-037 Seg. 2B	9.6 MI N of Norias Rd to 6.33 MI N of Norias Rd	2024	Fully funded	\$61,575,948
0327-03-050 Seg. 2C	11.40 MI N of Norias Rd to 9.6 MI N of Norias Rd	2024	Fully funded	\$35,619,465
0327-03-048 Seg. 3	9.71 MI N of Norias Rd to 11.40 MI N of Norias Rd	2030	Fully funded	\$111,966,400
0327-03-051 Seg. 4A	8 MI S of La Parra Ave to 9.71 MI S of La Parra Ave	2031	None (Requested SWDA)	\$0
0327-02-056 Seg. 4B	0.85 MI S of La Parra Ave to 8 MI S of La Parra Ave	2031	None (Requested SWDA)	\$0
0327-02-055 Seg. 5	Kenedy/Kleberg CL to 0.65 MI N of La Parra Ave	2033	None (Requested SWDA)	\$0

**Total Funding Needed \$159M**

**There are 14 international bridges, 3 deep water ports, 6 airports and 1 space port without interstate connectivity.**

# U.S. 77 – I69E Plan TxDOT - 2026 UTP

Construction in progress



# Force multipliers that maximize use of the TRZ

- RGVMPO merger leading to the 5<sup>th</sup> largest MPO in Texas providing seamless access to state/federal funding.
- TxDOT AFAs to leverage better ROI on projects by seeking construction reimbursement.
- Inter Local Agreements as a mechanism for partnering with other local entities looking to accelerate the TRZ #6 projects that allows cost sharing of project development costs.
- Tolls and expansion of toll interoperability projects along the US/Mexico Border.
- Vehicle Registration Fund (VRF) is another key legislative tool that provides a consistent stream of revenues to advance the system of projects.





# Key Takeaways

- Cameron County, together with the CCRMA, have utilized and leveraged two key legislative tools (TRZ and VRF) to advance the system of projects.
- TRZ allows for short/medium term planning capabilities.
  - For example, the 2025 UTP (10 year plan) requires approx. \$60M in local matching funds. Conservatively speaking, the CCRMA will get \$100 million from TRZ funds in the same timeframe.
  - This allows the CCRMA to budget appropriately between using funds to develop projects and for local match requirements.
- These great legislative tools (TRZ and VRF) together are projected to allow the CCRMA to generate approx. \$150M over the next ten years.
  - This allows us to maximize the investment of these funds into infrastructure to address community priorities and those with the greatest potential for return on investment.



# Conclusion

- The TRZ provides a consistent / steady flow of funds to incubate the big picture investments that will launch the RGV to the forefront in Texas.
- The low cost of living, LNG investments, 2 seaports, 1 space port, and interconnected tolling infrastructure together provide an economic competitive edge that will continue to drive TRZ growth and reinvestment.



# Cameron County Future Transportation Network



- Projects in development or construction that have benefited from the TRZ
- In essence, if we project the TRZ and VRF through 2065, then there will be a \$600M injection of funds. When we consider we have a \$2B system of projects, then we will have sufficient funds to cover a 25% local contribution cost share.

## **\$2 Billion CCRMA Overall Project Portfolio**

**14 CCRMA Projects Currently included in the TxDOT Border Master Plan**

### **Shovel Ready Projects**

- SH 550 Gap II
  - **\$33.4 M**
- Old Alice Road
  - **\$ 34.6 M**
- South Parallel Corridor Ph. III
  - **\$ 14.5 M**

**\$80+ Million in Locally Developed Shovel Ready Projects.**

### **Projects in Design**

- East Loop
  - **\$185 M**
- FM 509 Extension
  - **\$16 M**
- Whipple Rd.
  - **\$8.4 M**
- Morrison Road Project
  - **\$38.6 M**
- West Blvd.
  - **\$12.1 M**
- Misc. Projects
  - **\$30 M**

**\$290+ Million in Locally Developed Projects.**

### **Projects In Development**

- US 77 / I-69E
  - **\$159M**
- SPI 2<sup>nd</sup> access
  - **\$800M**
- Outer Parkway
  - **\$346M**
- Flor de Mayo International Bridge
  - **\$25M**
- I-69 Connector
  - **\$250M**
- US 281 Connector
  - **\$140M**

**\$1.7 Billion Planning Phase.**