

Cameron County Regional Mobility Authority Transportation Policy Board-Monthly Report March 26, 2025



Delivering “More than Roads” in Cameron County and the Rio Grande Valley



PIPELINES TRANSPORTATION

1. Brownsville to Matamoros
2. Matamoros to Brownsville



PIPELINES TRANSPORTATION



AIRPORTS

6 AIRPORTS (PLUS REYNOSA AND MATAMOROS AIRPORTS)

1. Valley International Airport (Harlingen, TX)
2. Brownsville-South Padre Island Airport (Brownsville, TX)
3. McAllen-Miller International Airport (McAllen, TX)
4. Port Isabel-Cameron County Airport (Los Fresnos, TX)
5. South Texas International Airport (Edinburg, TX)
6. Mid Valley Airport (Weslaco, TX)
7. General Lucio Blanco International Airport (Reynosa, Tamaulipas)
8. Matamoros International Airport (Matamoros, Tamaulipas)

14 INTERNATIONAL BRIDGES (INCLUDES CAMERON, HIDALGO, AND STARR COUNTIES)

1. Veterans International Bridge at Los Tomates (Brownsville, TX – Matamoros, Tamaulipas)
2. Gateway International Bridge (Brownsville, TX – Matamoros, Tamaulipas)
3. B&M Bridge (Brownsville, TX – Matamoros, Tamaulipas)
4. West Rail International Bridge (Brownsville, TX – Matamoros, Tamaulipas)
5. Free Trade Bridge (Los Indios, TX – Lucio Blanco, Tamaulipas)
6. Weslaco – Progreso International Bridge (Progreso, TX – Nuevo Progreso, Tamaulipas)
7. Donna International Bridge (Donna, TX – Rio Bravo, Tamaulipas)
8. Pharr-Reynosa International Bridge (Pharr, TX – Reynosa, Tamaulipas)

9. McAllen – Hidalgo International Bridge (Hidalgo, TX – Reynosa, Tamaulipas)
10. Anzalduas International Bridge (Mission, TX – Reynosa, Tamaulipas)
11. Los Ebanos Ferry (Los Ebanos, TX – Gustavo Diaz Ordaz, Tamaulipas)
12. Rio Grande City-Camargo Bridge (Rio Grande City, TX – Camargo, Tamaulipas)
13. Roma-Ciudad Miguel Aleman Bridge (Roma, TX – Ciudad Miguel Aleman, Tamaulipas)
14. Lake Falcon Dam Crossing (Falcon Heights, TX – Ciudad Guerrero, Tamaulipas)

4 INTERSTATES

1. Interstate 2
2. Interstate 69E
3. Interstate 69C
4. Interstate 169

6 MODES OF TRANSPORTATION



ROADWAY TRANSPORTATION



RAILWAYS TRANSPORTATION



SEAPORTS

3 SEAPORTS

1. Port of Brownsville (Brownsville, TX)
2. Port of Harlingen (Harlingen)
3. Port of Port Isabel (Port Isabel, TX)



SPACE TRAVEL

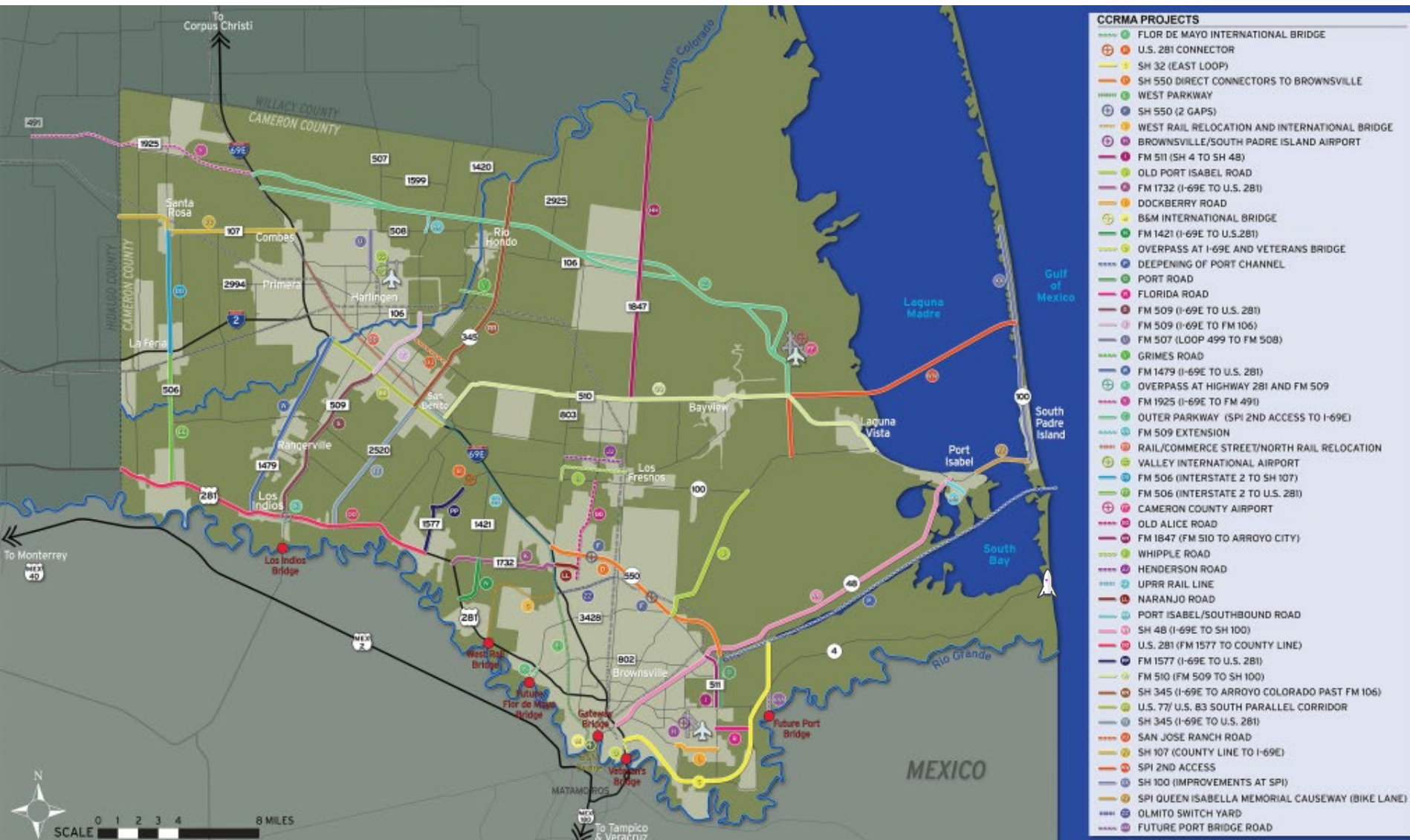
SPACE PORT

- Space X

RAILWAYS TRANSPORTATION

1. West Rail

Cameron County System of Projects



SH 550 GAP 2 PROJECT

CSJ: 0684-01-068

The SH 550 Gap 2 is the final Gap Project in the completion of the SH 550/I 169 from I 69E to the Port of Brownsville. The project has completed the environmental, right-of-way and utility relocation phase, and is in the process of finalizing design plans to the most current interstate standards. When completed Interstate 169 will connect the Port of Brownsville to I 69E. This is a significant infrastructure improvement project for Cameron County, the City of Brownsville and the Port of Brownsville.



SH 550 GAP 2 PROJECT

CSJ: 0684-01-068

Environmental



Preliminary Engineering



ROW & Utilities



Design 95% PS&E Completed

Funding



**Shovel
Ready**



Recent Activity:

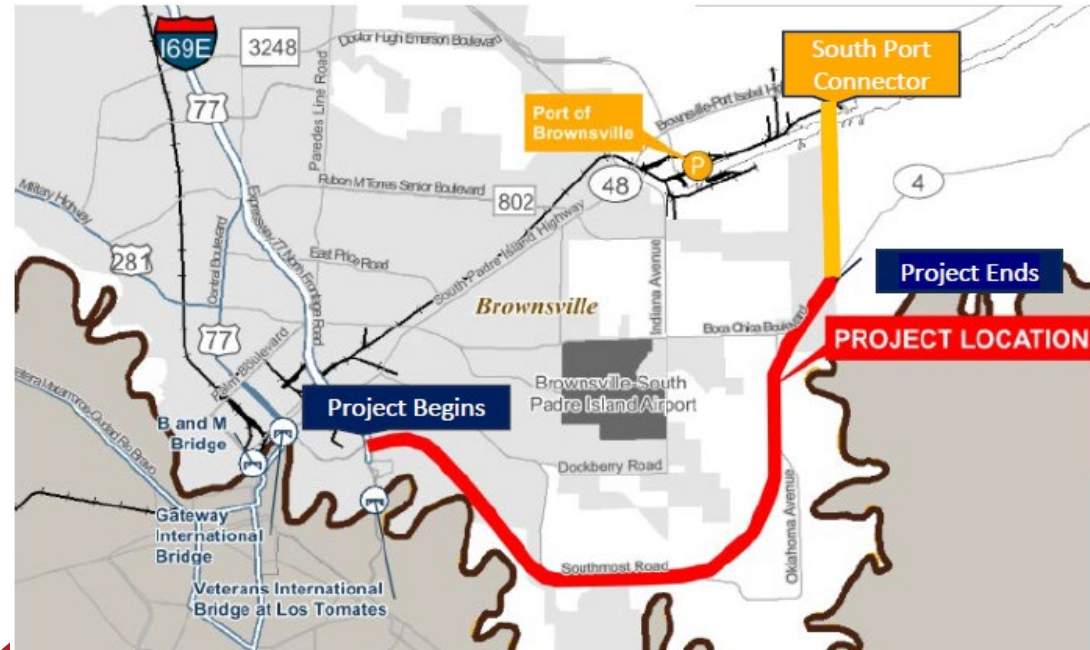
Included in Border Master Plan- High Impact Project
ROW in Place / Utilities Adjusted
Environmental Re Evaluation Underway
PS&E-95% complete – RR Exhibit Approved
Funding: \$27.4 Million in CAT 7 + \$1 Million in Cat 10
= \$28.4 Million Available for Construction
Construction Cost Estimate : \$34,534,591
Projected Letting FY26



EAST LOOP- INTERNATIONAL TRADE CORRIDOR

CSJ: 0921-06-315

The East Loop Project, which serves the international bridge system in Brownsville as well as the Port of Brownsville, which exports, and imports over 6.3 million metric tons of steel, petroleum, machinery ores and other international trade exports to our Mexico partners. The project, is an international bridge trade corridor which has been on the county's priority list for decades. The project will get overweight commercial trucks out of the densely populated portion of Brownsville from the Veterans bridge to the Port of Brownsville. The East Loop Project will create the East Loop Overweight Corridor for trucks traveling from Mexico and the Veterans International Bridge at Los Tomates to the Port of Brownsville and will reduce congestion on I-69E and State Highway 48.



EAST LOOP- INTERNATIONAL TRADE CORRIDOR

CSJ: 0921-06-315

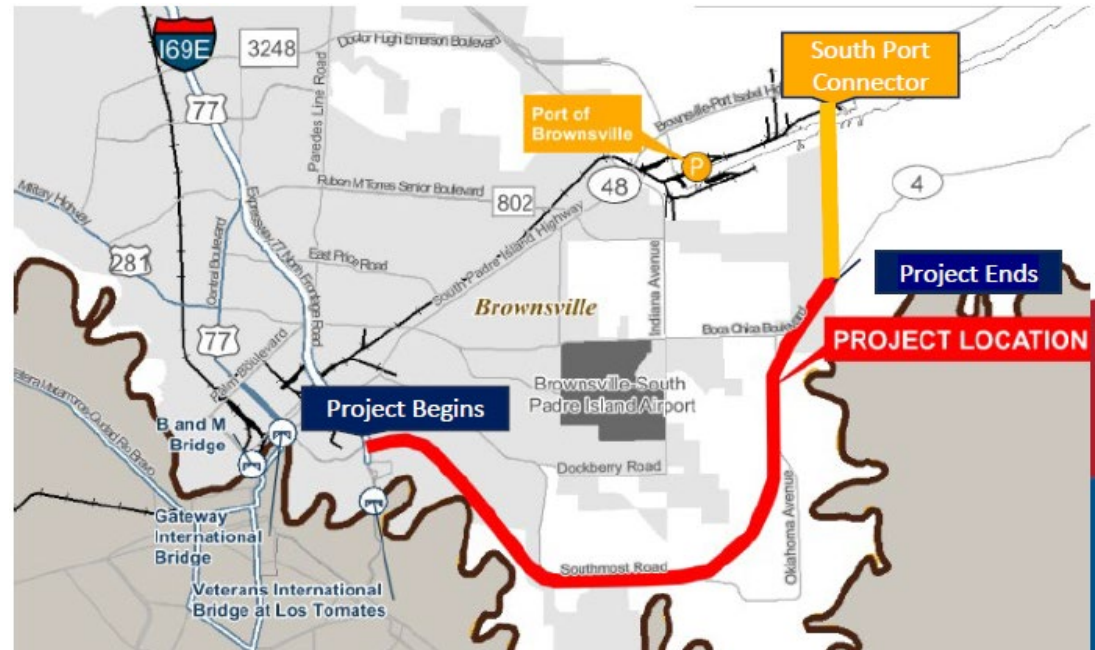
Environmental 92% complete

Preliminary Engineering ✓

ROW & Utilities In Process

Design 95%

Funding Partially Funded



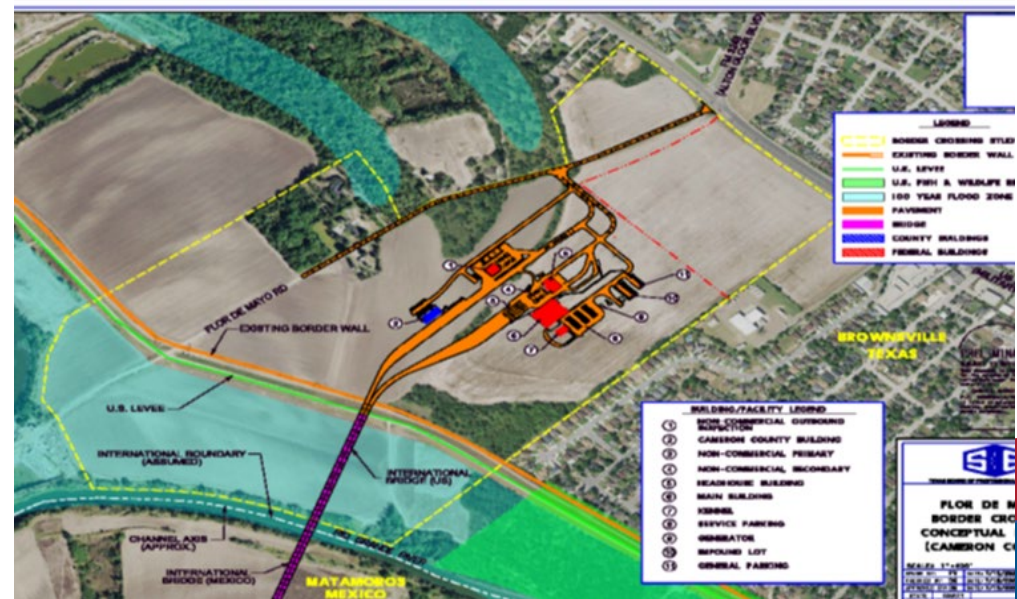
Recent Activity:

Included in Border Master Plan- High Impact Project
Environmental Documents are 92% complete.
95% PS&E submitted on January 13, 2025
Funding: \$27 Million available
Construction Cost Estimate: \$148,264,487



Flor de Mayo International Bridge

The proposed project in west Brownville will be a passenger vehicle only (POE) and pedestrian bridge located 8 River Miles upstream from the existing privately owned Brownsville and Matamoros International Bridge and 35.6 river miles downstream from the County owned Free Trade Bridge at Los Indios. The proposed border station will be located within the 173 acres of land presently owned by Cameron County. The County plans to coordinate the construction of the international bridge and facilities through the Cameron County Regional Mobility Authority.



Flor de Mayo International Bridge

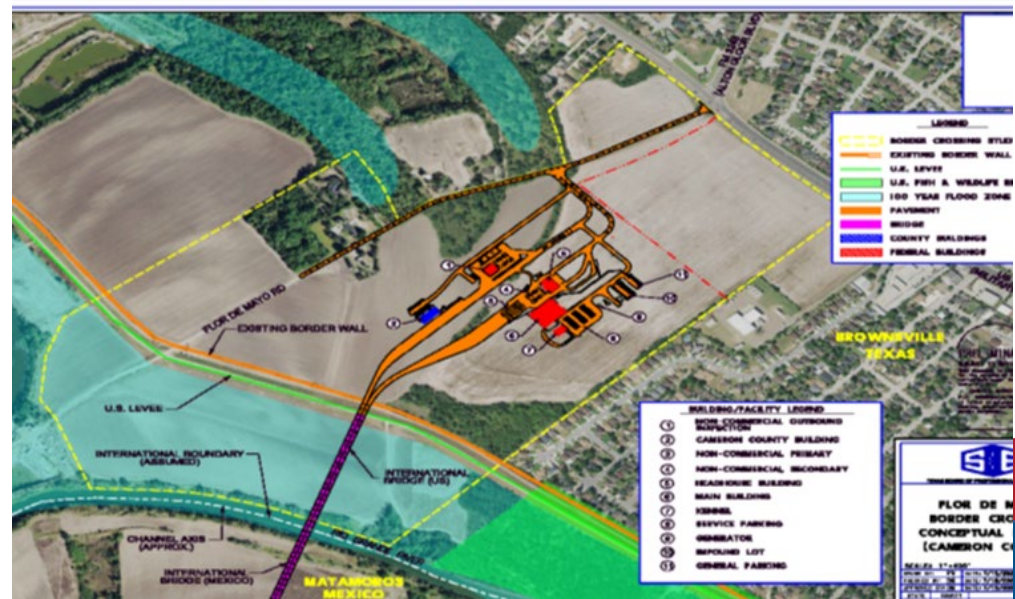
Environmental Underway

Preliminary Engineering Underway

ROW & Utilities 

Design Pending

Funding



Recent Activity:

Included in Border Master Plan- High Impact Project
Feasibility study Complete

Submitted Presidential Permit App. to US State Department (DOS)

President Biden approved the Presidential Permit on May 31, 2024

Preliminary Engineering and Environmental Activities underway

Meeting with US Coast Guard Forthcoming



Free Trade International Bridge

The proposed project includes two additional phases for the Los Indios – Land Port of Entry – Export Site Renovation. Phase 1 requires the relocation of existing staff from the existing Import Building to a temporary modular trailer. Phase 2 of the project involves selective demolition and new construction of office workspace for both CBP and Mexican Customs.



Free Trade International Bridge

Environmental



Preliminary
Engineering



ROW & Utilities



Design



Funding



Recent Activity:

CBP/GSA Final DAA Complete

Design is 100% Complete

Utilizing Local funds: Funding: \$1.2 Million Available

Donation Acceptance Agreement (DAP) completed

Letting took place September 26, 2024:

Ziwa Corporation awarded contract on October 31, 2024

Construction in progress.

Old Alice Rd

CSJ: 0921-06-290 & 0921-06-378

The proposed improvements are to reconstruct and widen the existing roadway to provide for a paved four lane urban roadway with shoulders and sidewalks within the existing right-of-way. The right of way is in place, design is completed, and the project will be environmentally cleared by April 2025.



Old Alice Rd

CSJ: 0921-06-290 & 0921-06-378

Environmental 98% Complete

Preliminary Engineering ✓

ROW & Utilities ✓

Design ✓

Funding ✓



Recent Activity:

Included in Border Master Plan- Medium Impact Project
100% PS&E complete, revised to joint bid a waterline relocation
Virtual Public Meeting Held August 11, 2020

ROW 100% in place

Funding: \$35.4 Million Available in CAT 7 and Cat 9 Funds

Construction Cost Estimate: \$43,642,370

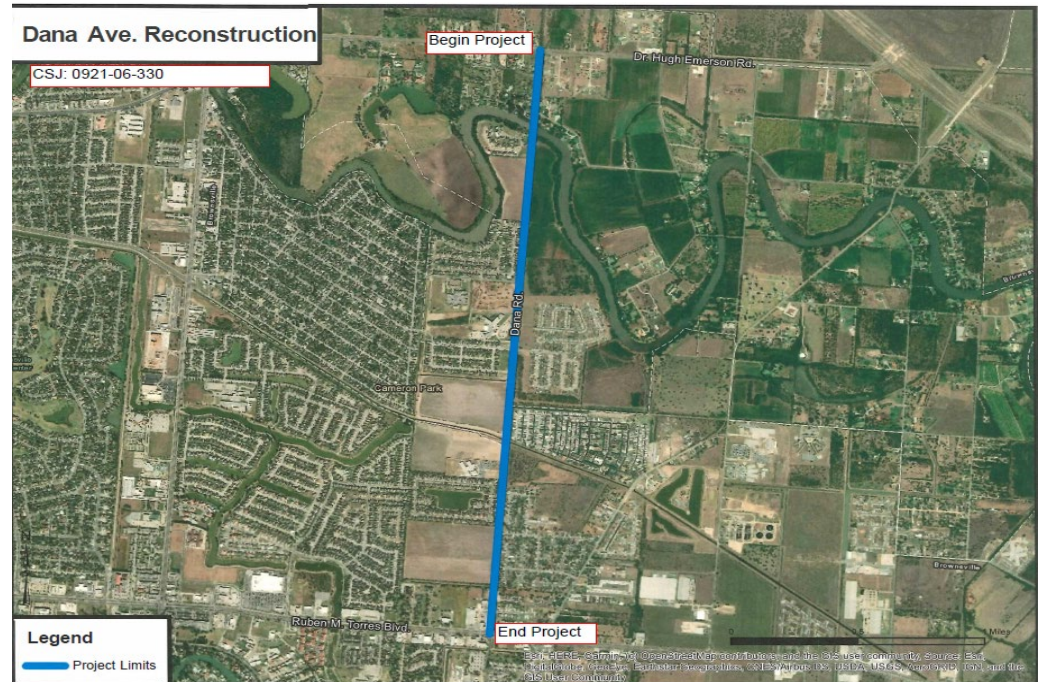
Projected Letting FY26 Roadway & FY26 for Sidewalks



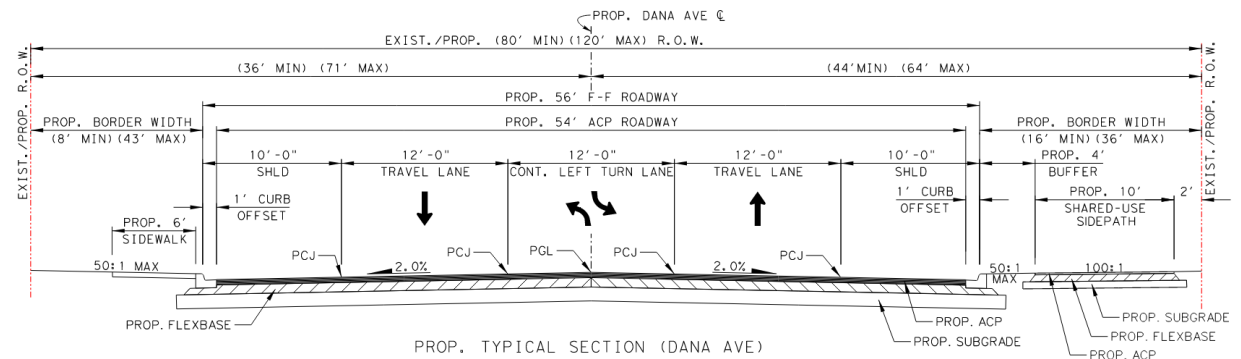
Dana Avenue

CSJ: 0921-06-330

This project consists of expanding a two-lane road to a two-lane road with a continuous left turn lane and full shoulders. The project will require some additional right-of-way. The project will connect FM 802 and FM 3248.



PROPOSED TYPICAL SECTION (DANA AVE)



Dana Avenue

CSJ: 0921-06-330

Environmental



Preliminary Engineering

Schematic 100%

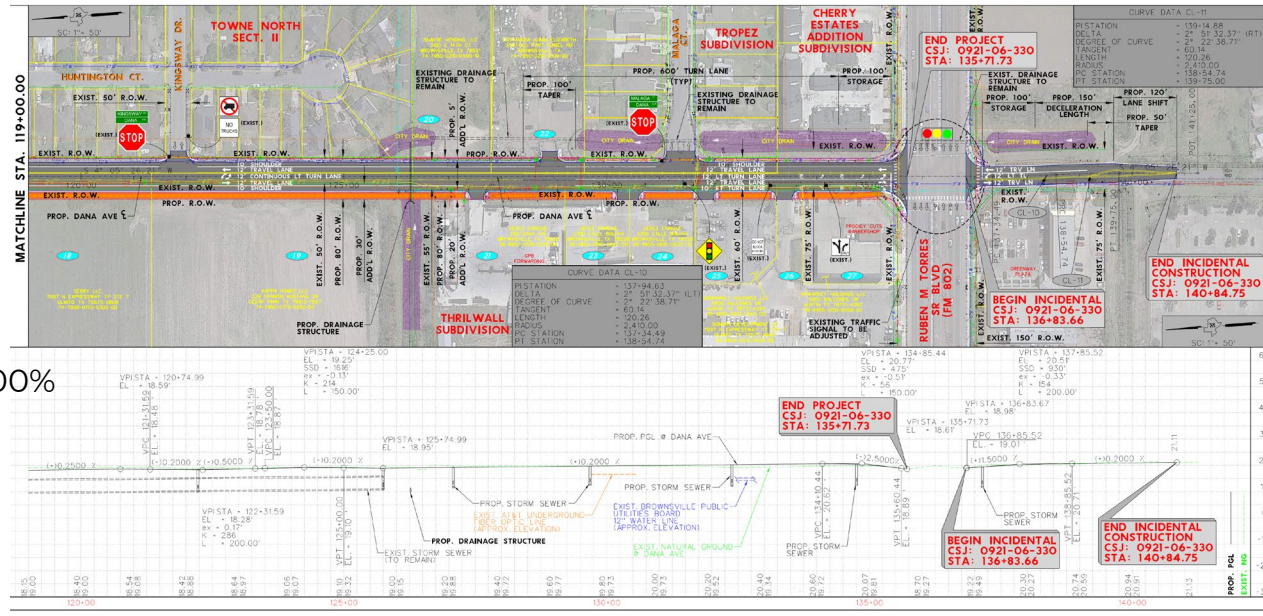
ROW & Utilities

Ongoing

Design

Ongoing

Funding



Recent Activity:

Includes Dana Avenue Bridge Rehabilitation
 Funding: \$16 Million Available in CAT 7 for Construction
 Construction Cost Estimate: \$21,291,635
 Environmentally Cleared 02/11/2025
 ROW Mapping and PS&E Ongoing
 Need to acquire right of way after ROW Mapping is Completed



FM 509

CSJ: 0921-06-254

FM 509 will be constructed to add new four lane divided highway from FM 508/FM 509 intersection to FM 1579. The Project will be approximately 3 miles. Efforts are currently being made to incorporate alignments with the Outer Parkway Project.



FM 509

CSJ: 0921-06-254

Environmental Ongoing

Preliminary Engineering Ongoing

ROW & Utilities Pending

Design Pending

Funding



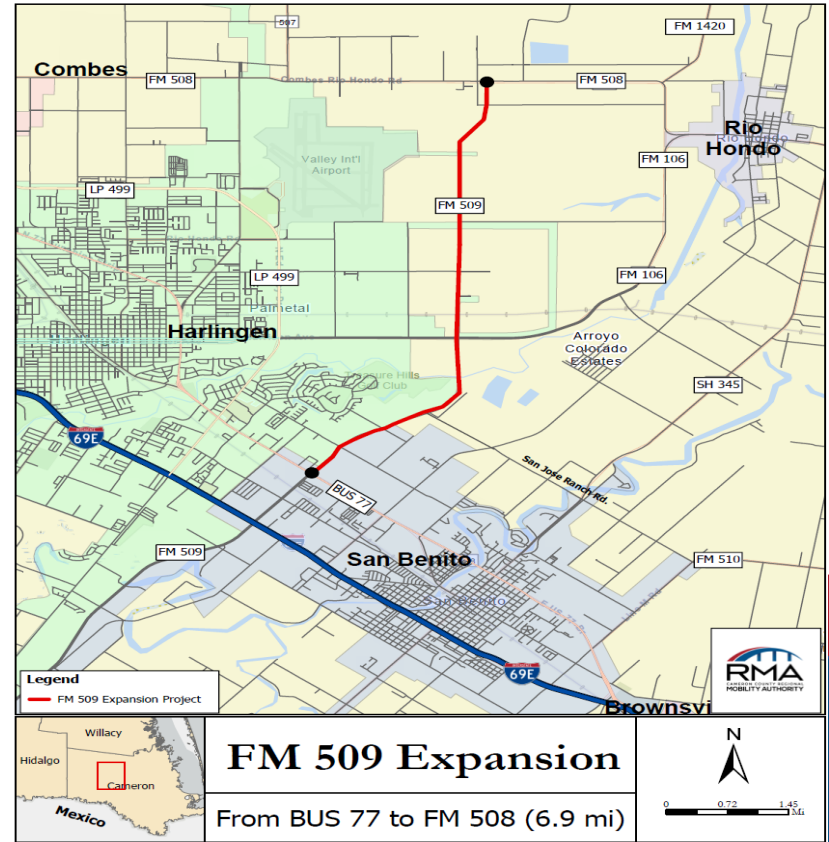
Recent Activity:

Included in Border Master Plan- Medium Impact Project
Transportation Commission Approved On-System MO May 2021
CCRMA will utilize 100% Local Funds for Preliminary Engineering
Funding: \$7.5 Million Available in CAT 2 Funds
Project Kickoff held 12/11/2023
NEPA Clearance: Open Ended D-CE resubmitted May 2024
Updated Traffic Projections Underway
Construction Cost Estimate: \$11,465,385

FM 509- BUS 77- FM 508

CSJ: 2369-01-033

The FM 509 project will widen and reconstruct the existing 2 lane rural roadway to an urban four lane roadway with a center left turn lane and shoulders, within the existing ROW. The project length is 6.85 miles.



FM 509- BUS 77- FM 508

CSJ: 2369-01-033

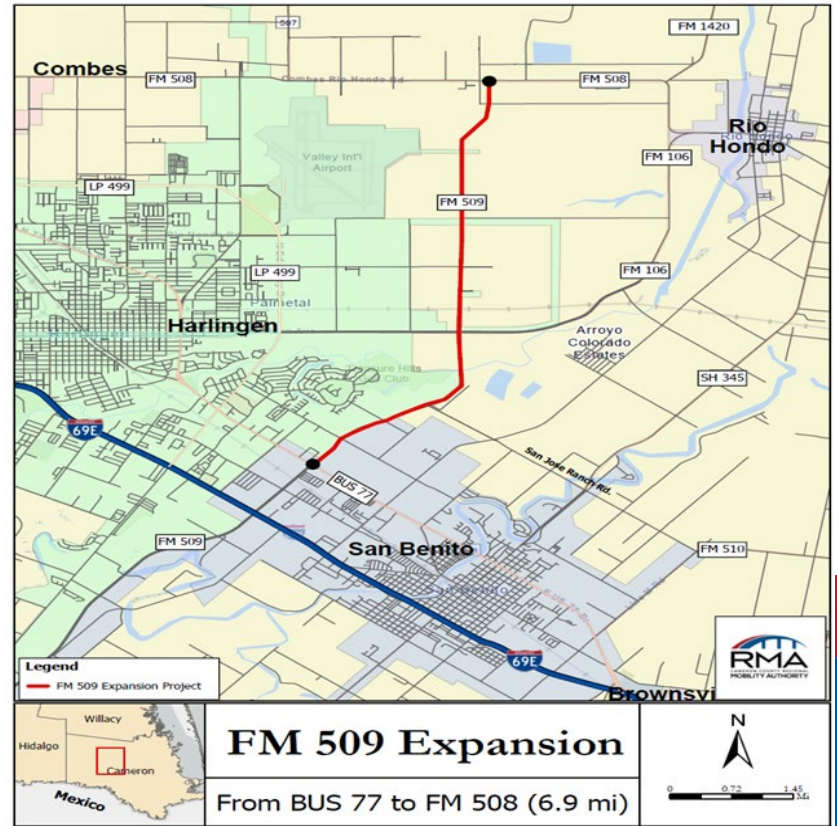
Environmental Pending

Preliminary Engineering Pending

ROW & Utilities Pending

Design Pending

Funding Partially
Funded



Recent Activity:

2025 UTP approved \$500,000 in CAT 2 funds
Need Donation Agreement with TxDOT



FM 1846- Williams Road-North

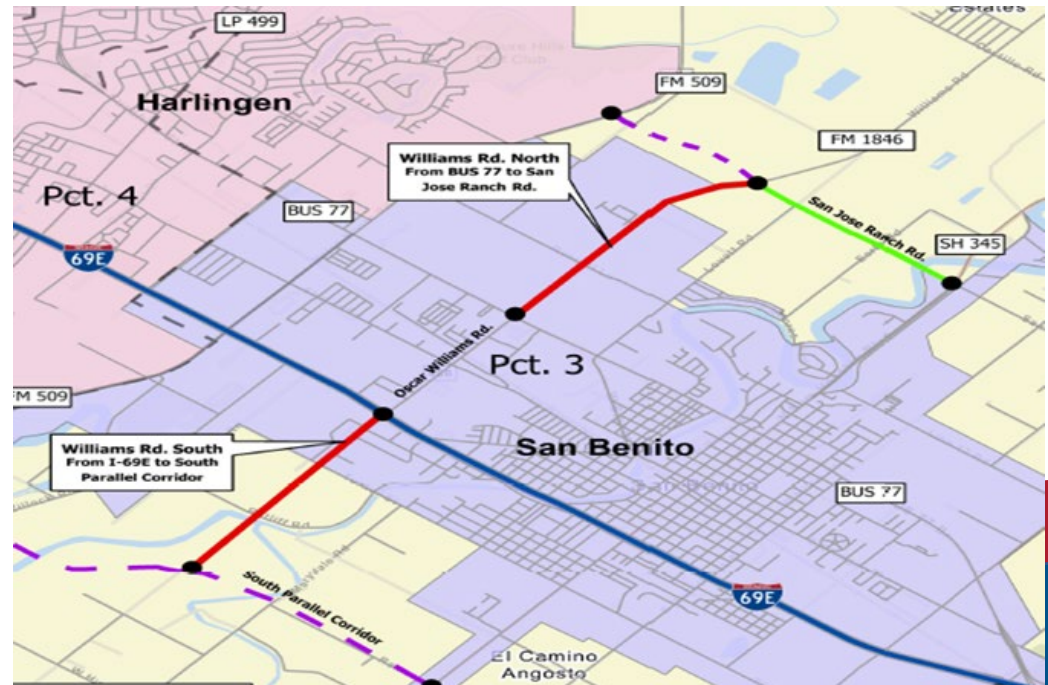
CSJ: 1065-02-042

Williams Road (North)

This project consists of an expansion from 2 lanes to 4 lanes with a continuous left turn lane. Project limits are from Business 77 to San Jose Ranch Road in San Benito.

Williams Road (South)

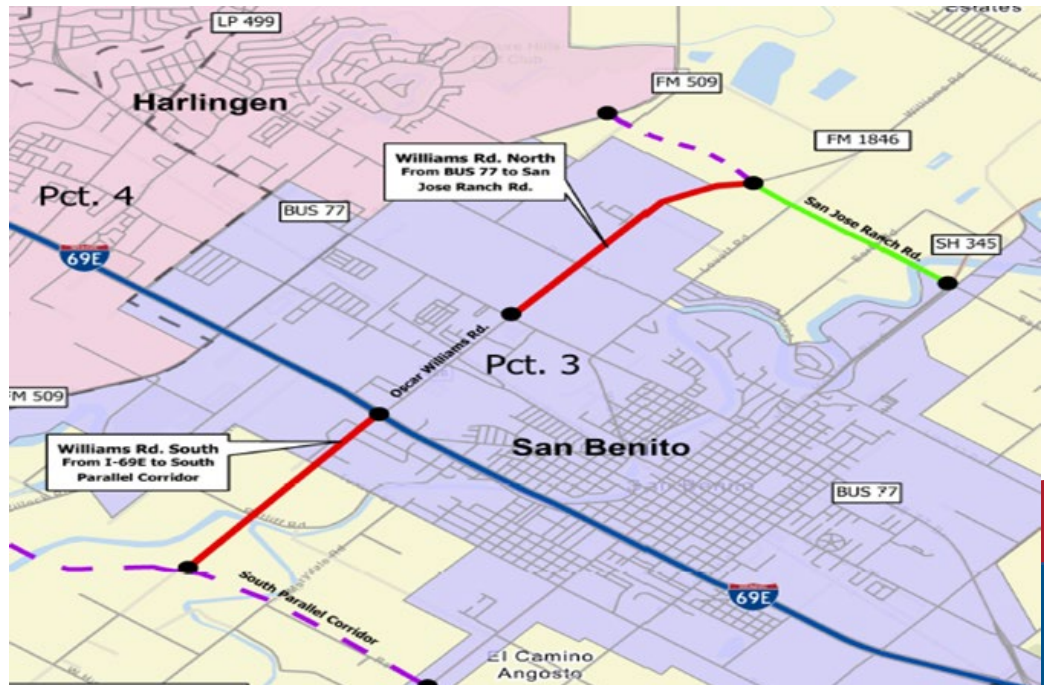
This project consists of a new location road on the south side of I-69E to South Parallel corridor in San Benito. The project will require the acquisition of right of way.



FM 1846- Williams Road-North

CSJ: 1065-02-042

Environmental	33%
Preliminary Engineering	Schematic 80%
ROW & Utilities	Pending
Design	Pending
Funding	Pending



Recent Activity:

ILA with City of San Benito and Cameron County approved
\$500,000 in Category 2 Funds
Schematic-80% complete
AFA approved on 01/10/24
Traffic projection (Corridor Analysis) Submitted 02/19/24
Kick off and Env. Scoping Meetings held 04/15/24
DCC held 05/10/24





SH 104

SECOND ACCESS PROJECT TO SOUTH PADRE ISLAND

SH 104 (Second Access Project to South Padre Island) will involve a second crossing on a new location to South Padre Island to provide a much-needed alternate route from the island to the mainland. The second causeway also would facilitate evacuation of South Padre in the event of a hurricane or other natural disaster. The project will include a bridge approximately 8 miles long as well as improvements to roadways on the mainland and on the Island. The total length of the SH 104 Project is approximately 17.6 miles.



**The Texas Transportation Commission placed the project on-system
on December 12, 2023 through Minute Order 116614.**

SH 104

SECOND ACCESS PROJECT TO SOUTH PADRE ISLAND

Environmental Underway

**Preliminary
Engineering** Underway

ROW & Utilities Underway

Design Underway

Funding Underway

Project Needs:

Complete Environmental Document
Design
Funding

Recent Activity:

Included in Border Master Plan- Medium Impact Project
Using Local Funds to Complete Project Schematic
Coordination with Resource Agencies including: FHWA, TxDOT, USFWS,
TPWD, USACE, USDA, NOAA, EPA, FEMA, GLO, TCEQ, TX Railroad Commission,
Texas DEM, THC, Sea Turtle Inc.
Weekly & offline coordination meetings held between TxDOT ENV & CCRMA
TxDOT Managing Environmental Phase



Harlingen Rail Improvements Project

FR-CSR-21-002

The Harlingen Commerce Street rail relocation project will relocate and realign 1.7 miles of track and construct one new crossing at Commerce Street to eliminate seven existing grade crossings in the City of Harlingen, Texas. The new track connection will enable the Union Pacific Railroad (UPRR) Harlingen Subdivision track to connect to the UPRR Brownsville Subdivision, as well as straighten out two curves and plans to safely raise the speed from 10 MPH to 30 MPH to minimize rail congestion through this area.



Harlingen Rail Improvements Project

FR-CSR-21-002

Environmental Underway

Preliminary Engineering Underway

ROW & Utilities 

Design Pending Schem.
Approval by FRA

Funding 



Recent Activity:

Partnership between: CCRMA & Cameron County

Project Scope: Eliminate certain railroad-street crossings

Limits: N. Commerce street S. of US 77 Sunshine to Adams Avenue

Using Federal & Local funds to complete Environmental Phase

Using Federal & Local funds to complete Design

Funding: \$5.6 Million Available for Construction

FRA Agreement for Phase I – executed, started March 01, 2024

Agreement with UPRR executed December 2022

Prelim. Engineering site visit March 2024 / Diagnostic site visit December 2024

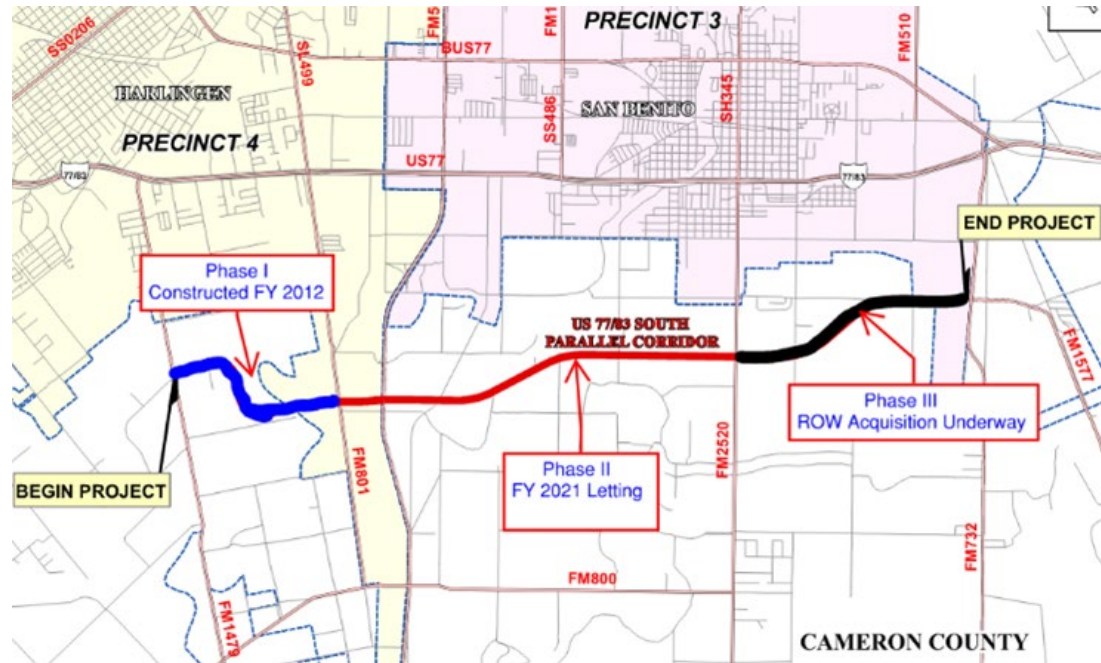
Draft schematic under review by CCRMA



S. Parallel Corridor Phase III

CSJ: 0921-06-257

Project limits are from FM 2520 (Sam Houston Blvd) to FM 1577. Partially on new location with intermittent existing 40-80 ft ROW. Construction of a 2-lane rural roadway. Phase III will complete the South Parallel Corridor project. TxDOT recently increased Rider 11B funds by \$2 Million.



S. Parallel Corridor Phase III

CSJ: 0921-06-257

Environmental



Preliminary
Engineering



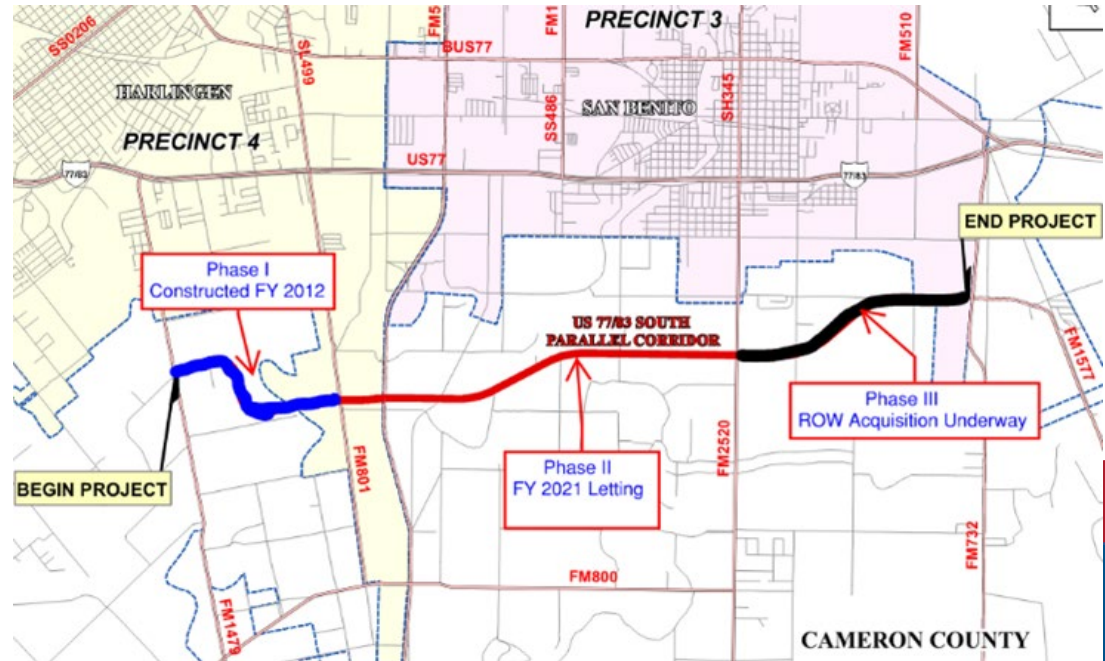
ROW & Utilities

97%

Design

100%

Funding



Recent Activity:

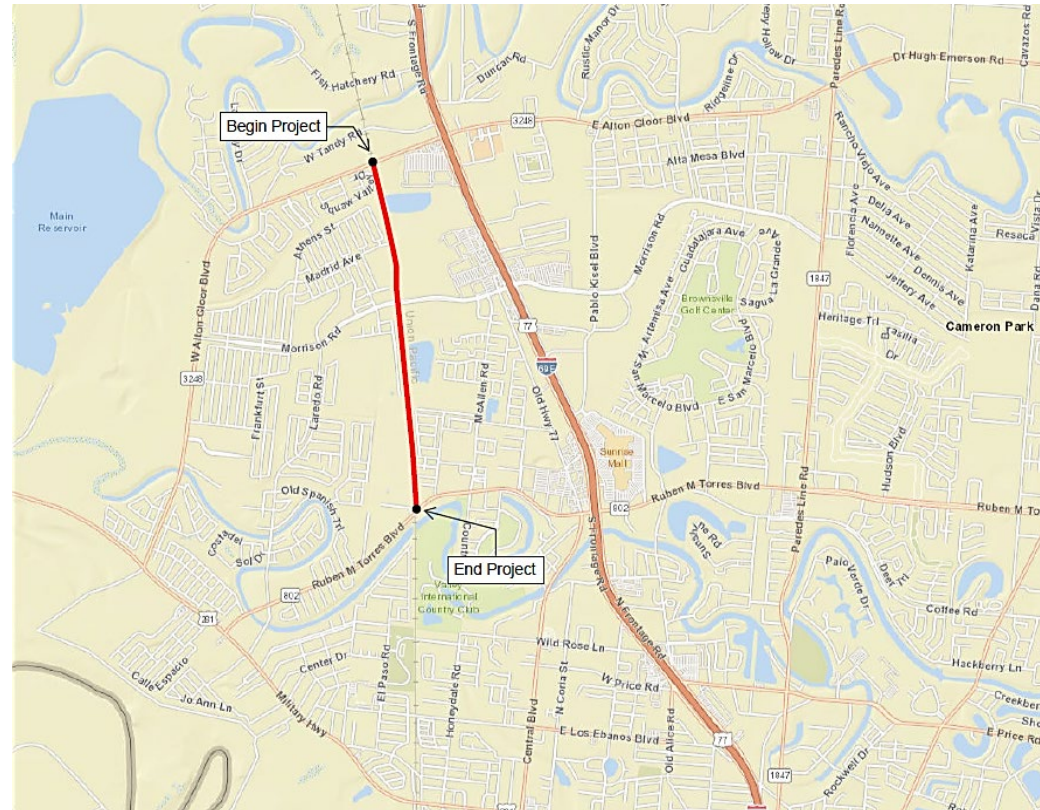
Included in Border Master Plan- Medium Impact Project
ROW Acquisition Underway using Local Funds (complete)
Utility Coordination Underway using Local Funds (1 remains)
Funding: \$6.765 Million Available in CAT 7 Funds – \$5M in Rider 11B
Construction Cost Estimate: \$10,311,068
Projected Letting FY26
60% PS&E submitted to TxDOT on 09/2024
95% PS&E submitted to TxDOT 12/2024
100% PS&E to be submitted to TxDOT 04/2025



West Blvd Roadway

CSJ: 0921-06-340

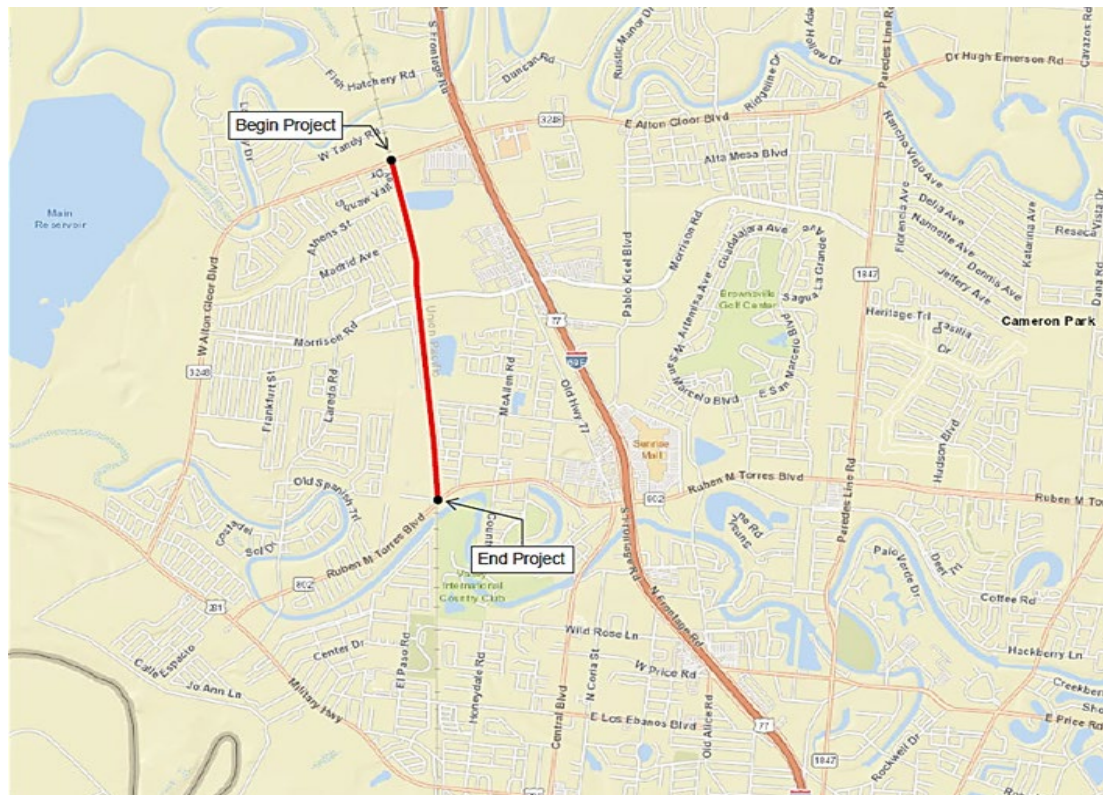
As a component of the 6.5-mile West Rail Trail project, the Roadway component is being developed to provide a connection between two on-system TxDOT arterial roadways and improve the safety and quality of life for local residents by reducing congestion and eliminating travel time delays for first responder personnel and residents during an emergency to highly developed areas along the project. The proposed urban roadway section would accommodate the Hike and Bike trail and provide for improved mobility between FM 802 (Ruben Torres Blvd) and FM 3248 (Alton Gloor Blvd) two major arterials in the region.



West Blvd Roadway

CSJ: 0921-06-340

Environmental	50%
Preliminary Engineering	✓
ROW & Utilities	✓
Design	95%
Funding	Partially Funded



Recent Activity:

PS&E is being completed with 100% Local Funds
Functional Classification received June 2023

ROW is in place

PS&E-95% complete

AFA Approved by CCRMA Board 05/30/24

Project Kickoff conducted 09/2024

Ongoing PE Efforts: CE NEPA docs and Traffic Projections

Construction Cost Estimate: \$11,339,314

Projected Letting FY26-27

U.S. 281 Connector - Prelim. Eng.

The project will provide a divided urban corridor that would improve mobility and safety between U.S. 281 (Military Highway), I69E, and SH 100. This route will become critical as trade increases in the region between the port and international bridges. The U.S. 281 Connector Project is approximately 7.5 miles long.



U.S. 281 Connector - Prelim. Eng.

Environmental Underway

Preliminary Engineering Underway

ROW & Utilities Pending

Design Pending

Funding Pending



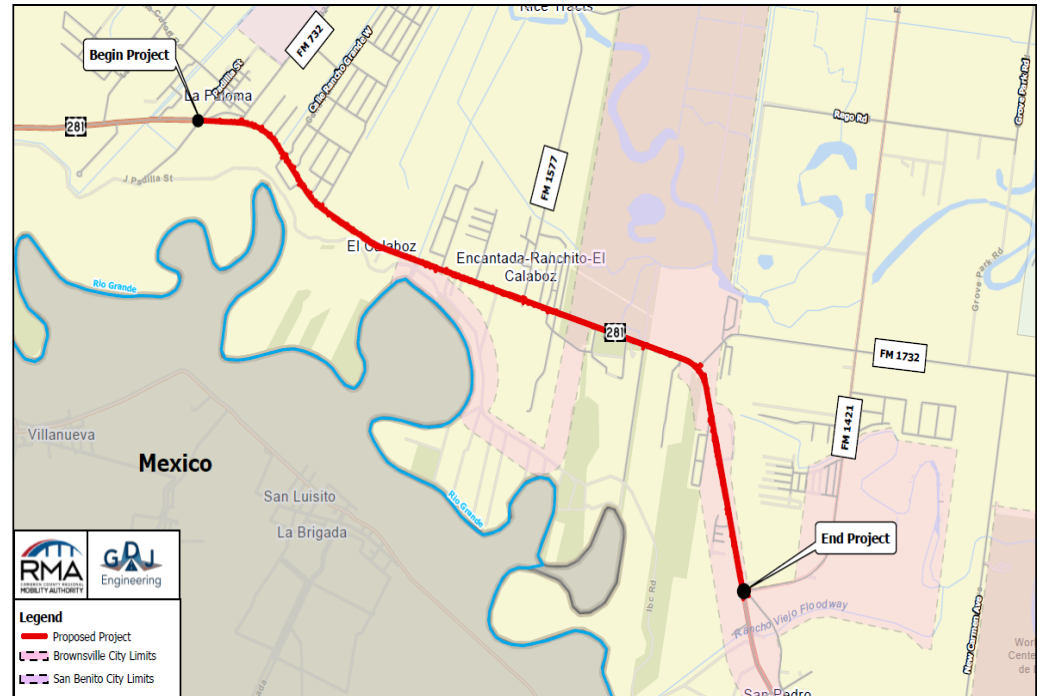
Recent Activity:

Included in Border Master Plan- Medium Impact Project
CCRMA Conceptual Project to provide a connection between
US281 (Military Highway) and I69E.
Ultimately connecting the International Bridges
Directly with the Port of Brownsville Via SH 550
Kickoff Meeting conducted 09/2024



US Highway 281 (Military Highway) Utility Relocation Project

The project consists of designing utility adjustments for approximately 6 miles on US Highway 281 (Military Highway) between FM 732 to FM 1421. Through a successful partnership between Cameron County, Military Highway Supply Corporation and CCRMA, this project will ensure that TxDOT's reconstruction and expansion of US Highway 281 (Military Highway) is completed on schedule.



U.S. 281 Connector - US Highway 281 (Military Highway) Utility Relocation Project

ROW & Utilities Underway

Design Underway

Funding 



Recent Activity:

On November 05, 2024, Cameron County approved an agreement with Military Highway Water Supply Corporation for \$1,022,926.00 in ARPA funds to be used towards professional engineering services through the CCRMA develop design plans for utility relocations along US Highway 281

On November 21, 2024 .CCRMA approved and Interlocal Agreement with Military Highway Water Supply Corporation to develop design plans for utility relocations along US Highway 281

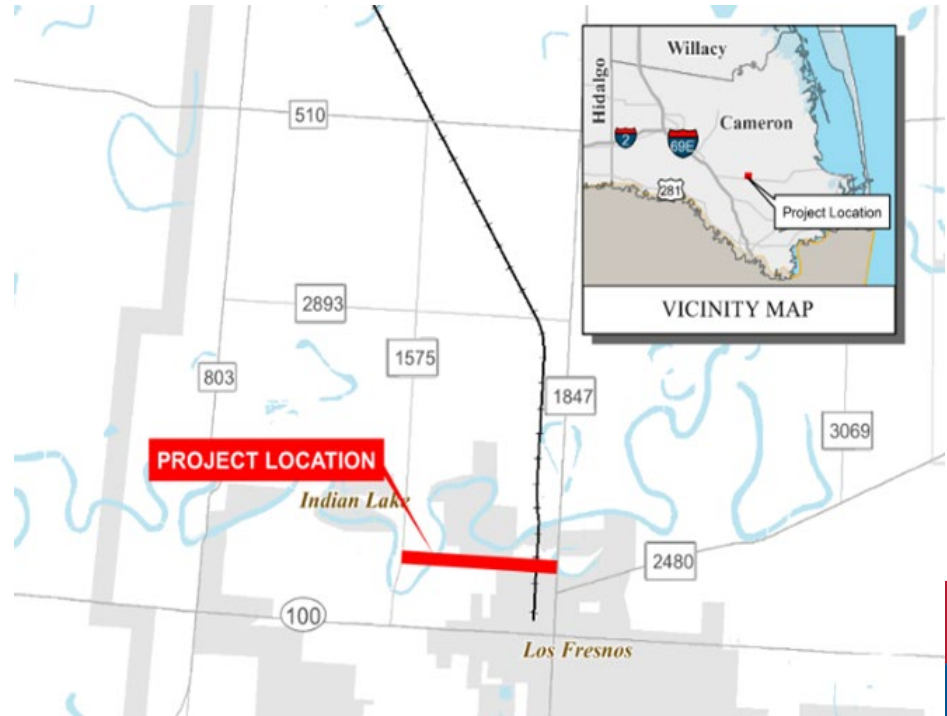


100% PS&E completion by 03/31/2025

Whipple Road

CSJ: 0921-06-292

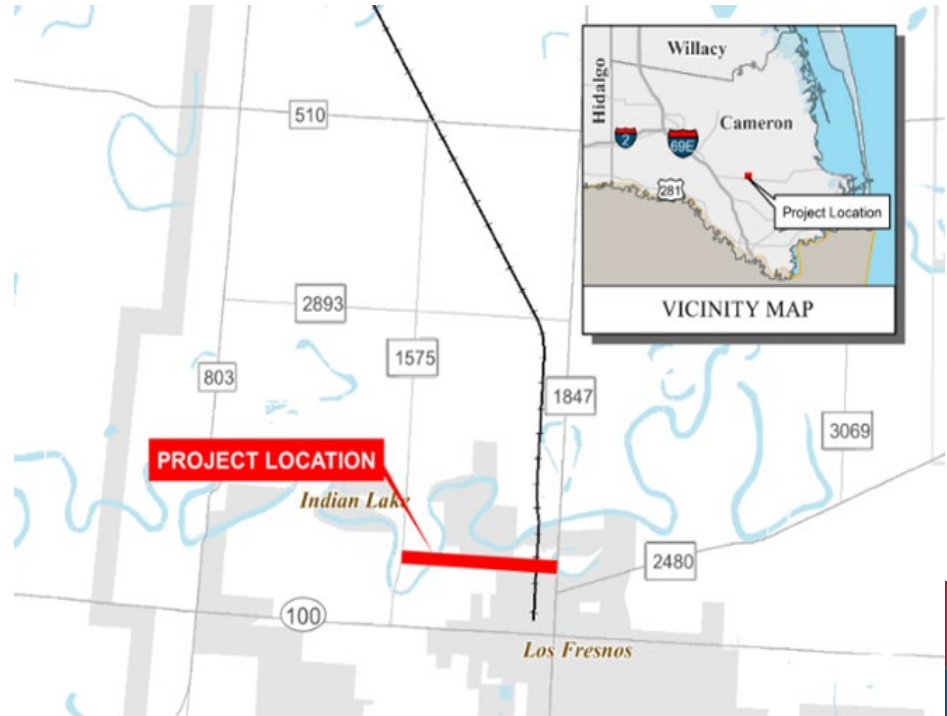
This project involves the expansion of the existing road in Los Fresnos. This road will be improved from FM 1847 to FM 1575. The right-of-way is in place to do the necessary improvements



Whipple Road

CSJ: 0921-06-292

Environmental	85%
Preliminary Engineering	Schematic 95%
ROW & Utilities	Pending
Design	Underway
Funding	Pending



Recent Activity:
Schematics at 95%
Environmental at 85%
Funding: \$4.5 Million Available in CAT 7 Funds
Public Involvement completed January 06, 2023
Construction Cost Estimate: \$8,333,237
Amended AFA 06/2024
PS&E started 11/2024

Outer Parkway

CSJ: 0921-06-283

The Outer Parkway Project is approximately 21.5 miles long and includes the construction of a new four lane divided highway from I69E (U.S. 77) near the North Cameron County Line to FM 1847. The project will link the General Brant Road Project with I69E (U.S. 77).



Outer Parkway

CSJ: 0921-06-283

Environmental Ongoing

Preliminary Engineering Ongoing

ROW & Utilities Pending

Design Pending

Funding Pending



Recent Activity:

Cameron County / CCRMA entered into an ILA for PE/Env Clearance on 02/2023.

TxDOT ENV concurred with continuing to classify the project as an Environmental Assessment document.

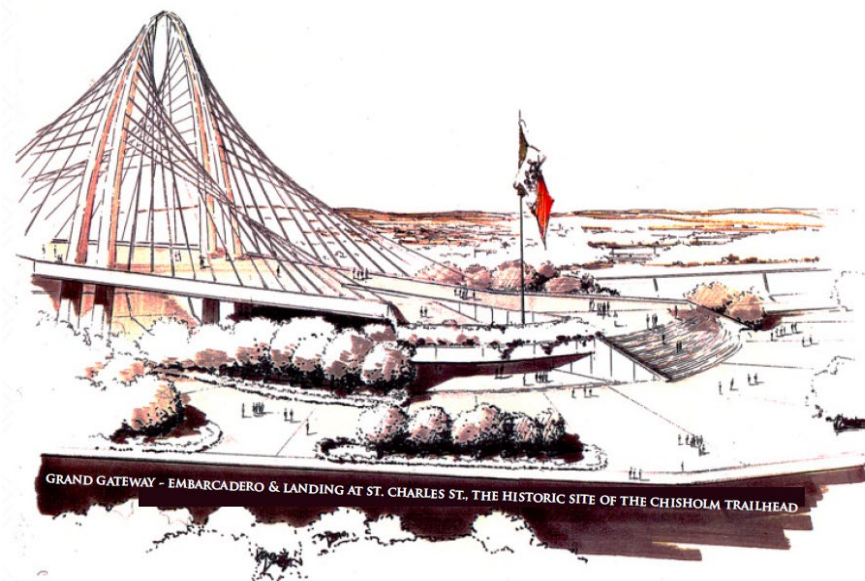
Technical Preferred Alternative anticipated mid 2025

Construction Cost Estimate: \$278,968,530

Gateway Pedestrian Bridge-Riverfront Development

Cameron County is the owner-operator of the Gateway International Bridge, which crosses the famous Rio Grande River, connecting Cameron County to downtown Matamoros. The Gateway Bridge is in the reach of the River that has served for centuries as our primary connection of commerce and culture with Matamoros and other communities throughout Texas and Tamaulipas.

Through an Interlocal Agreement, Cameron County engaged its Cameron County Regional Mobility Authority (CCRMA) and Cameron County Transportation Reinvestment Zone Number 6 (TRZ #6) to oversee the development, construction and financing of the remodel and associated riverfront redevelopment. The CCRMA submitted a Presidential Permit Application for Gateway Bridge on December 17, 2024.



Gateway Pedestrian Bridge-Riverfront Development

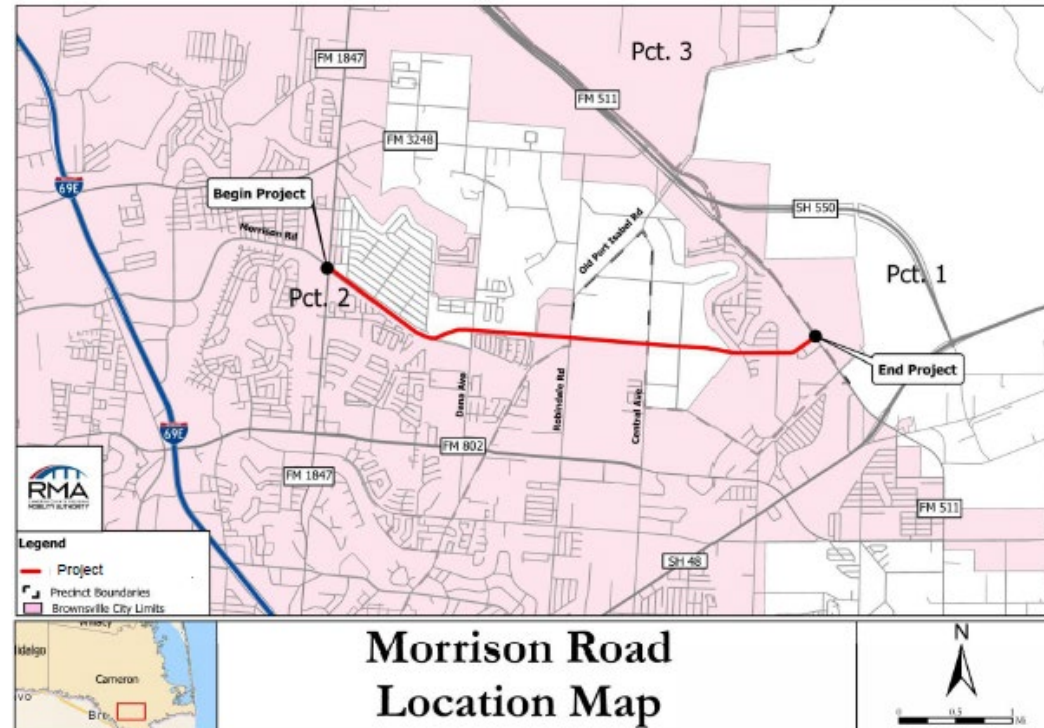


Morrison Road

CSJ: 0921-06-291

This is a new location road from FM 1847 to FM 511. When complete, Morrison Road will go from FM 3248 to FM 511. This project will provide connectivity to a large retail area in Brownsville and reduce congestion on several major roads.

Seg 1 - CSJ: 0921-06-291 SEGMENT 1 From: FM 1847 to Dana Avenue
Seg 2 - CSJ: 0921-06-362 SEG 2 From Dana Avenue to FM 511



Morrison Road

CSJ: 0921-06-291

Seg 1 - CSJ: 0921-06-291 SEGMENT 1 From: FM 1847 to Dana Avenue
Seg 2 - CSJ: 0921-06-362 SEG 2 From Dana Avenue to FM 511

Environmental Underway

Preliminary Engineering Underway

ROW & Utilities Pending

Design Pending

Funding



Recent Activity:

Included in Border Master Plan- High Impact Project
Environmental and Schematic are under development
Preliminary Coordination with City and
Drainage District Underway

Functional Classification Received for Segment I on 04/04/24
CCRMA to request FC for Segment II of the Project

Funding: \$16 Million Available in FY25 UTP excess availability of CAT 7 Funds

Construction Cost Estimate (Seg 1): \$6,753,749

Construction Cost Estimate (Seg 2): \$29,158,369



North Cameron County Rail Safety and Reutilization Project (Study Update)

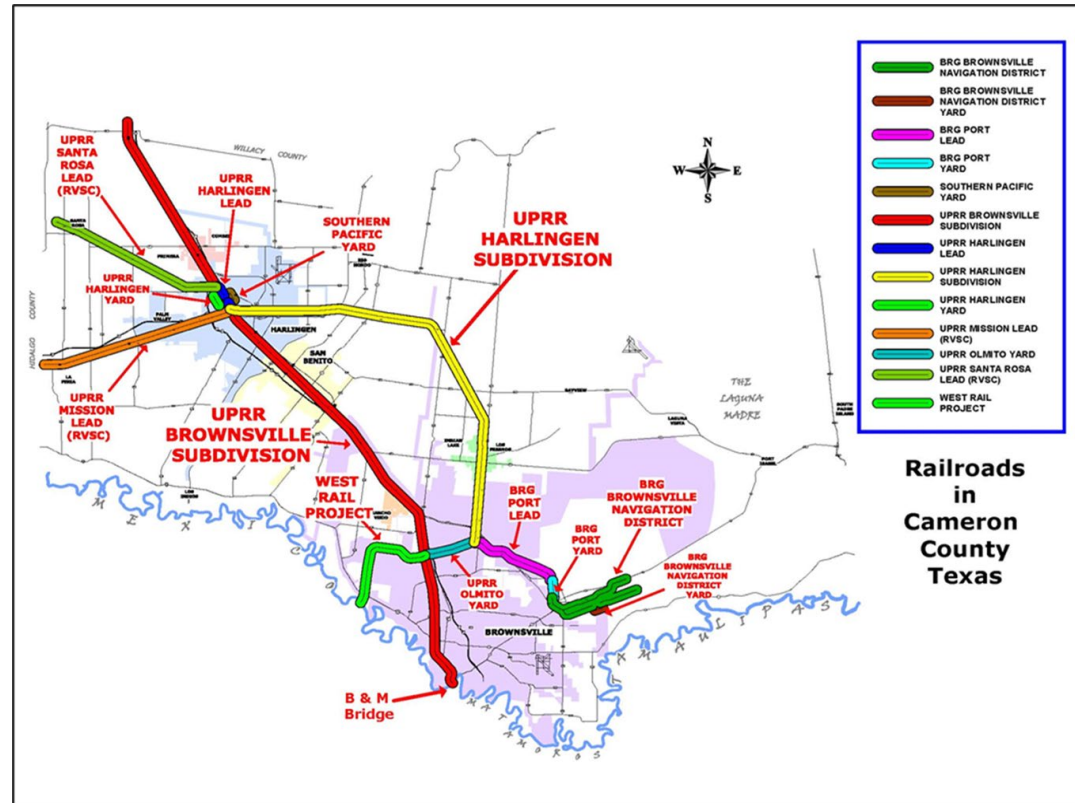
Environmental Pending

Preliminary Engineering Pending

ROW & Utilities Pending

Design Pending

Funding Pending



Recent Activity:

The recommended rail safety and reutilization plan would:

- Eliminate 39 at-grade rail crossings.
- Eliminate 204,642 vehicles daily crossing at rail intersections.
- Remove 90,000 feet of rail trackage.
- Open 17.5 miles of 100 feet of right of way for other use.
- Provide potential for new pedestrian and bike trails.
- Opens 9 miles of access for new development along I69E.
- Cost \$25 million.

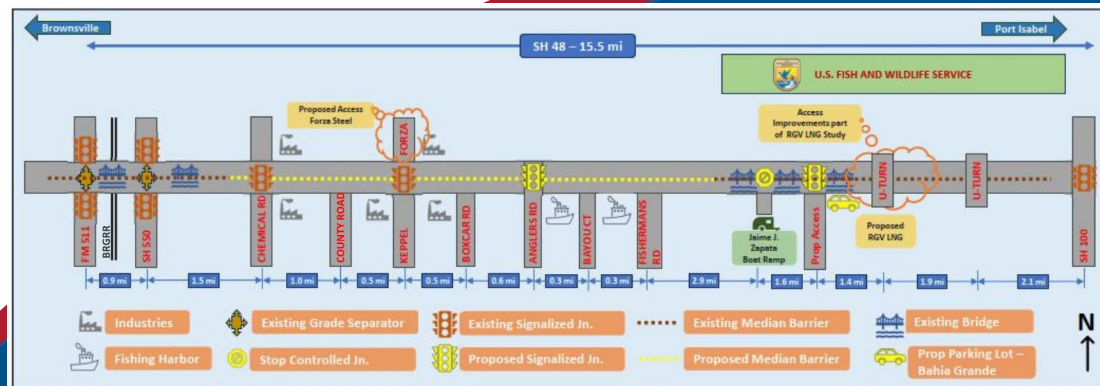
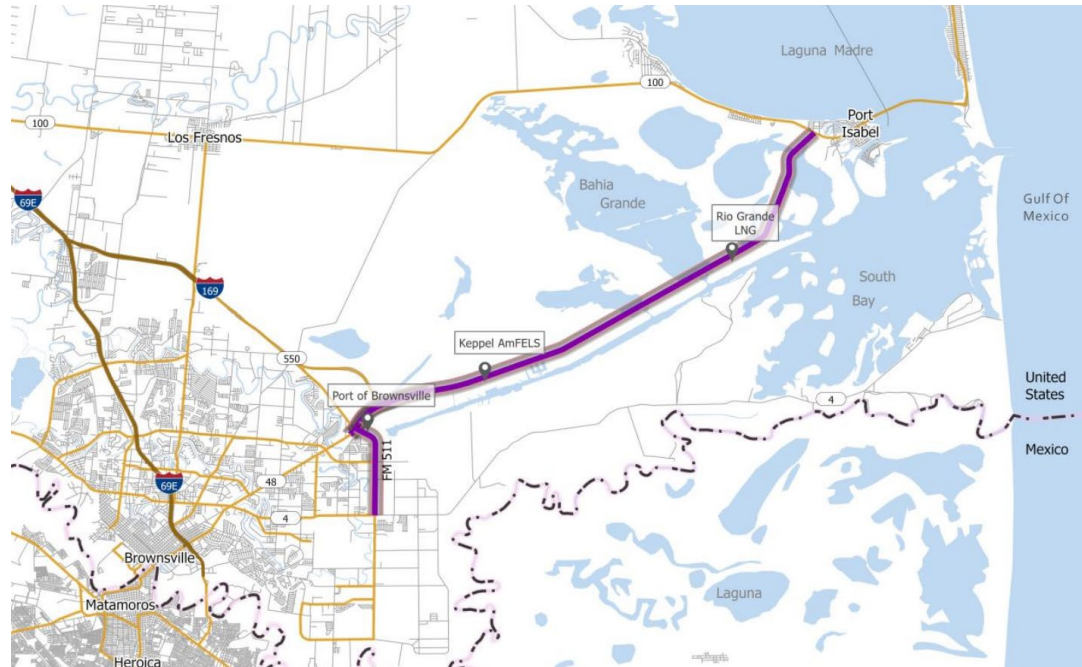


SH 48 Master Plan

To prepare for this growth and to cater the developments, the Cameron County Regional Mobility Authority (CCRMA) is developing this Master Plan for SH 48.

It is culmination of traffic projection analysis, feasibility analysis, and meetings among stakeholder groups (Port, TxDOT, recreational groups) along SH 48, and other fieldwork efforts along I-69E, SH550 (future I-169), and SH 48.

The SH 48 corridor connects ports, harbors, and industries along recreation locations. The project corridor is expected to have significant industrial development resulting in sizable growth in employment. The new developments are currently in the planning and execution stages.

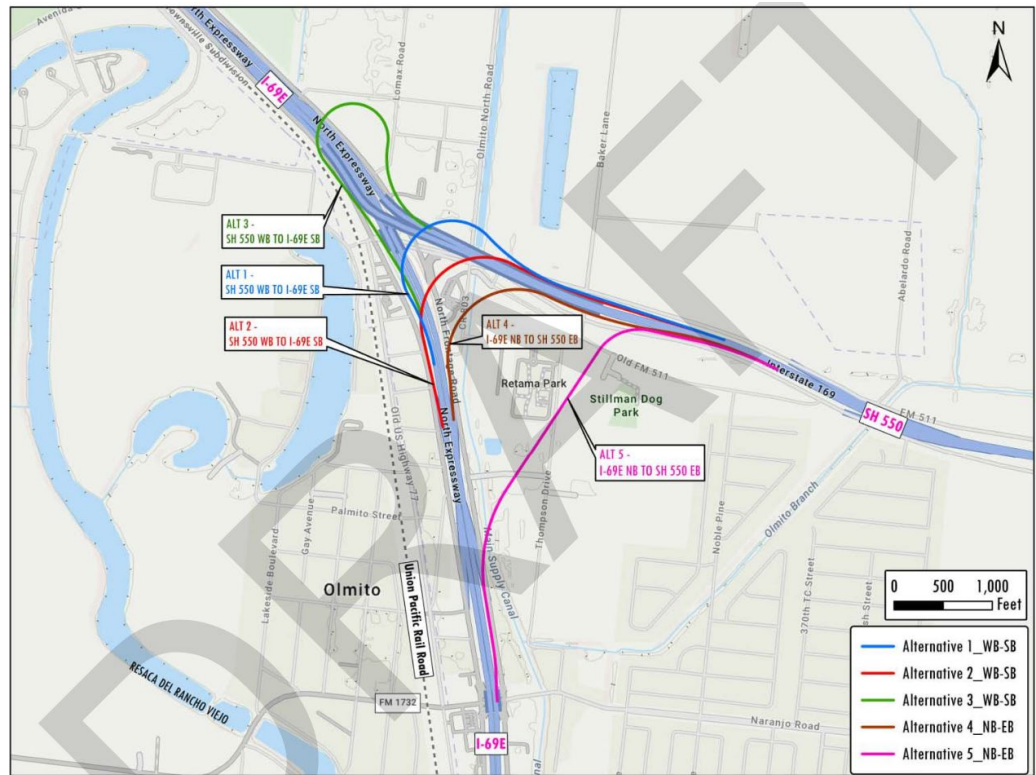


Short term recommendations include construction of cable median barrier and improvements at five Intersections (Chemical Road, Keppel AmFELS, Anglers Rd, Zapata Boat Ramp, Bahia Grande Proposed Parking)



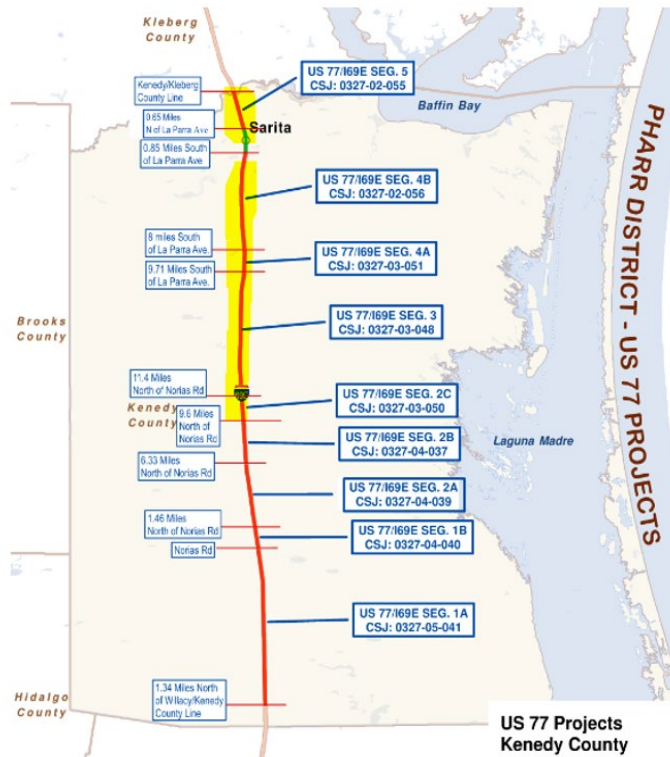
SH 550 DCs from Brownsville

The construction of additional direct connectors between Interstate 69E (I-69E) and State Highway 550 (SH 550) is being evaluated by the Cameron County Regional Mobility Authority (CCRMA). The scope of the project is to build additional direct connector ramps from westbound SH 550 to southbound I-69E and from northbound I-69E to eastbound SH 550. The region's traffic is anticipated to grow due to the overall development of the region, including an increase in demand from the Port of Brownsville area and the other planned projects nearby.



U.S. 77 – I69E Plan

TxDOT - 2025 UTP



CSJ	Limits	FY	Funding Status	Funding Amount
0327-05-041 Seg. 1A	Norias Rd to 1.34 MI N of Willacy/Kenedy CL	2024	Fully funded	\$214,518,354
0327-04-040 Seg. 1B	1.46 MI N of Norias Rd to Norias Rd	2024	Fully funded	\$31,033,192
0327-04-039 Seg. 2A	6.33 MI N of Noria Rd to 1.46 MI N of Norias Rd	2024	Fully funded	\$100,100,488
0327-04-037 Seg. 2B	9.6 MI N of Norias Rd to 6.33 MI N of Norias Rd	2024	Fully funded	\$61,575,948
0327-03-050 Seg. 2C	11.40 MI N of Norias Rd to 9.6 MI N of Norias Rd	2024	Fully funded	\$35,619,465
0327-03-048 Seg. 3	9.71 MI N of Norias Rd to 11.40 MI N of Norias Rd	2028	None (Requested SWDA)	\$91,500,000
0327-03-051 Seg. 4A	8 MI S of La Parra Ave to 9.71 MI S of La Parra Ave	2031	None (Requested SWDA)	\$20,720,000
0327-02-056 Seg. 4B	0.85 MI S of La Parra Ave to 8 MI S of La Parra Ave	2031	None (Requested SWDA)	\$82,880,000
0327-02-055 Seg. 5	Kenedy/Kleberg CL to 0.65 MI N of La Parra Ave	2033	None (Requested SWDA)	\$33,480,000

Total Funding Needed \$270M

There are 14 international bridges, 3 deep water ports, 6 airports and 1 space port without interstate connectivity.

CCRMA Toll System Projects

CCRMA Back Office Update

- FUEGO Tag live October 21, 2021
- Customer Tag Functionality
- Electronic Communications
- Customization of Accounts to accommodate Bridges & Parks, as well as future partners
- Redesigned reporting for Interoperability
- New HCTRA BOS with Fuego Tag CUSIOP Interoperability live since July 2024

CC Intl Bridge Toll Collection System

- Go Live – Spring 2025
- New lane functionality with ETC Tags and RFID Cards
- Improved Lane processing logic
- Improved transaction accountability and Cash Management process
- Account migration from current system to CCRMA Back Office
- Improvements to increase electronic payment versus cash payment
- Improved system accountability with Digital Video Auditing System

CC Parks User Fee Collection System

- Estimated Go Live – 3rd Qtr 2025
- Complete new system design leveraging ETC in the lanes
- Daily passes can now be offered to ETC customers
- CCRMA tag functionality to replace current monthly, annual, and RV passes
- Improved revenue enforcement using automatic license plate readers (ALPR)
- Improved system accountability with Digital Video Auditing System



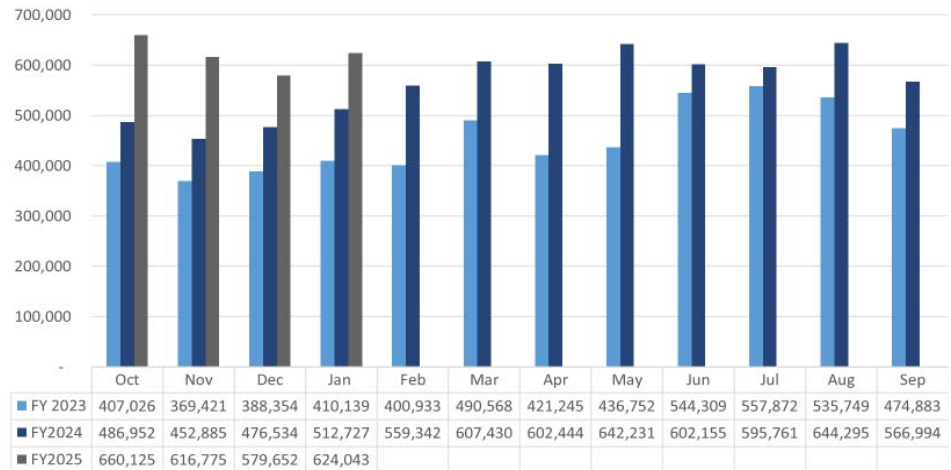
Tolling along SH 550



Year to Year Traffic Comparison

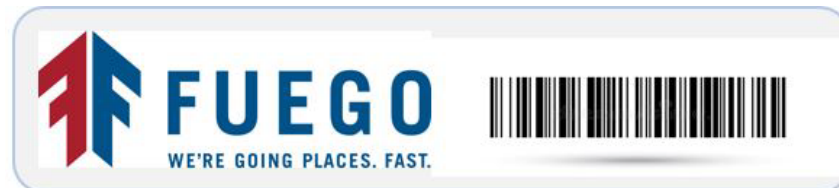
31% Increase from January 2024

SH 550 Transactions



FY Year Total	
FY 2022	5,437,251
FY 2023	6,749,750
FY 2024*	2,480,595
*Through January	





What is Fuego Tag?

Fuego Tag is an electronic payment method created and operated by the Cameron County Regional Mobility Authority (CCRMA) that allows motorists to pay tolls electronically. Motorists with Fuego tags are allowed to use the State Highway 550 Toll Road with the following benefits:

- Discounted toll rates
- Online account management
- Auto replenishment
- Local Customer Service Center
- Available for commercial and passenger vehicles
- **Tag is interoperable with tolling entities from the Mexican Border to Canada and Colorado to Florida as of July 15, 2024.**

CCRMA TOLL INTEROPERABILITY NEWS



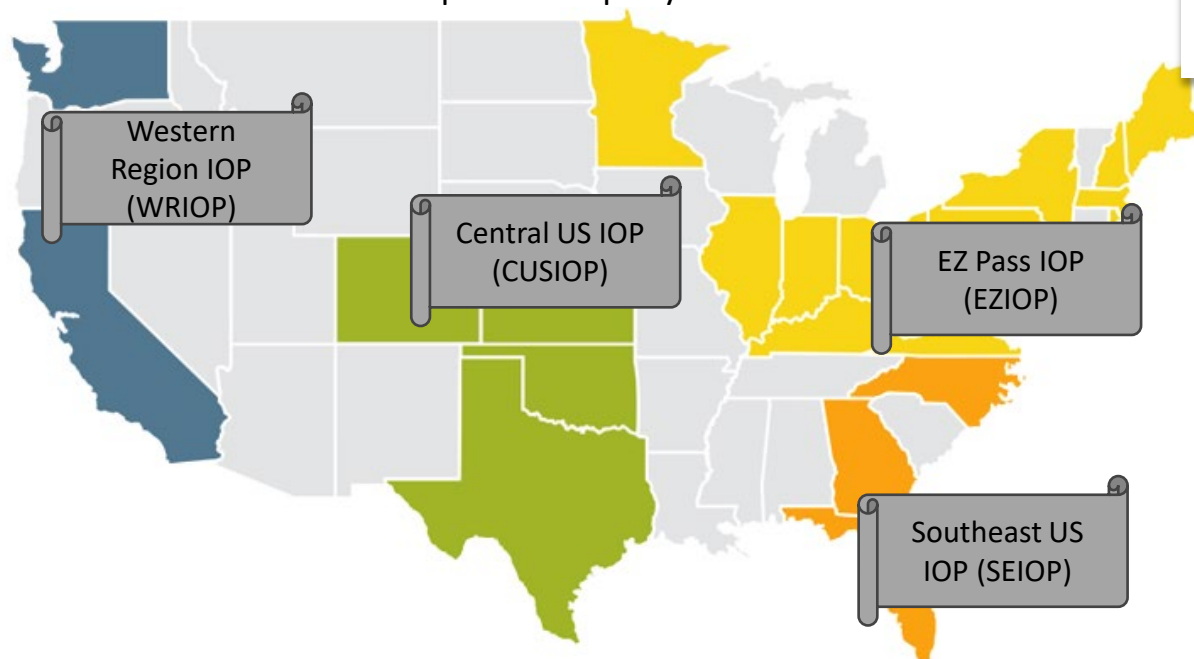
FOR IMMEDIATE RELEASE
July 13, 2024

Contact:
Pete Sepulveda, Jr.
Executive Director
psepulveda@ccrma.org
956-621-5571

HCTRA and CCRMA partner to expand accessibility and provide more choices for drivers in the region and beyond!

Interoperability

Central United States Interoperability (CUSIOP) Hub is the nation's first hub designed to national interoperability standards and has been operational since 2017. CUSIOP Hub facilitates transaction processing, reporting, and reconciliation for the participating agencies in the CUSIOP with over 600 million tolls processed per year.



On July 2023 the Harris County Commissioners Court entered into an Interlocal agreement with the Cameron County Regional Mobility Authority (CCRMA) to expand accessibility for drivers.

Approval of this agreement allowed the Harris County Toll Road Authority (HCTRA) and CCRMA to begin working on an implementation plan that will include CCRMA's FUEGO tag as an acceptable tag on HCTRA toll road lanes.

On July 15, 2024, HCTRA will assume responsibility for the CCRMA's back-office operations meaning that the FUEGO Tag will now be interoperable with all toll roads in the State of Texas, Kansas, Oklahoma and soon Florida and Colorado.

CCRMA's regional and international drivers will now be able to travel seamlessly between Cameron County and Harris County. The partnership eliminates the need for regional and international drivers to manage multiple toll accounts. Drivers will only need one transponder in their vehicle and will be able to determine which transponder benefits them the most.

Today, NTTA, TxTag, K-Tag and PIKEPASS are accepted on Harris County Toll Road Authority (HCTRA) operated toll road lanes, and HCTRA EZ TAG is accepted on CCRMA operated toll road lanes.

IOP Hub	Legend	Online Since
CUSIOP		2017
SEIOP		2023
EZIOP		2025
WRIOP		TBD

Key Takeaways

- Cameron County, together with the CCRMA, have utilized and leveraged two key legislative tools (TRZ and VRF) to advance the system of projects.
- TRZ allows for short/medium term planning capabilities.
 - For example, the 2025 UTP (10 year plan) requires approx. \$60M in local matching funds. Conservatively speaking, the CCRMA will get \$100 million from TRZ funds in the same timeframe.
 - This allows the CCRMA to budget appropriately between using funds to develop projects and for local match requirements.
- These great legislative tools (TRZ and VRF) together are projected to allow the CCRMA to generate approx. \$150M over the next ten years.
 - This allows us to maximize the investment of these funds into infrastructure to address community priorities and those with the greatest potential for return on investment.



Completed Projects

- Completed projects that have benefited from the TRZ and VRF

Project Name	Limits / Length (where applicable)	Construction Cost
Veterans Bridge POV	At Rio Grande River and I-69E	\$ 18,315,000
SH 550 Direct Connectors	0.53 miles east of Old Alice Road to 0.48 miles west of FM 1847, approx. 1 mile	\$ 44,000,000
SH 550 Gap 1 Main Lanes Construction	East of Old Alice Road to West of FM 1847, approx. 2.4 miles	\$ 6,650,000
Main entrance to the Port of Brownsville	SH4 and Port of Brownsville	\$ 2,500,000
Veterans Bridge Fast Lane Expansion	At Rio Grande River and I-69E	\$ 6,000,000
South Port Connector	SH 4 and ends in the vicinity of Ostos Road, approx. 2 miles	\$ 25,600,000
West Rail Relocation	I-69E and Olmito Switchyard into Mexico, approx. 7 miles	\$ 45,000,000
Olmito Switchyard & Repair in Place Facility	Olmito Switchyard at I-69E	\$ 17,000,000
Spur 54 in Harlingen, Texas	Chester Park Road to I-69E, approx. 1 mile	\$ 6,000,000
SH 550 North Port Spur	FM 3248 to SH 48/New Port Entrance, approx. 3 mile(s)	\$ 34,000,000
US 77 Sarita Overpass	Sarita School Area at La Para Road, approx. 1 mile	\$ 12,000,000
Spur 56 Willacy County	FM 1018 to FM 3168, approx. 8 miles	\$ 28,000,000



Force multipliers that maximize our Substantial Transportation System

- RGVMPO merger leading to the 5th largest MPO in Texas providing seamless access to state/federal funding.
- TxDOT AFAs to leverage better ROI on projects by seeking construction reimbursement.
- Inter Local Agreements as a mechanism for partnering with other local entities looking to accelerate the TRZ #6 projects that allows cost sharing of project development costs.
- Tolls and expansion of toll interoperability projects along the US/Mexico Border.
- Vehicle Registration Fund (VRF) is another key legislative tool that provides a consistent stream of revenues to advance the system of projects.



Cameron County Future Transportation Network

- Projects in development or construction that have benefited from the TRZ
- In essence, if we project the TRZ and VRF through 2065, then there will be a \$600M injection of funds. When we consider we have a \$2B system of projects, then we will have sufficient funds to cover a 25% local contribution cost share.

\$30 Million in Projects Currently Under Construction
\$1.6 Billion CCRMA Overall Project Portfolio

14 CCRMA Projects Currently included in the TxDOT Border Master Plan

Shovel Ready Projects

- SH 550 Gap II
 - **\$33.4 M**
- Old Alice Road
 - **\$ 43.6 M**
- South Parallel Corridor Ph. III
 - **\$ 14.5 M**

\$90+ Million in Locally Developed Shovel Ready Projects.

Projects in Design

- East Loop
 - **\$216 M**
- FM 509 Extension
 - **\$16 M**
- Whipple Rd.
 - **\$8.4 M**
- Morrison Road Project
 - **\$38.6 M**
- West Blvd.
 - **\$12.1 M**
- Misc. Projects

\$290+ Million in Locally Developed Projects.

Projects In Development

- US 77 / I-69E
 - **\$270M**
- SPI 2nd access
 - **\$800M**
- Outer Parkway
 - **\$200M**
- Flor de Mayo International Bridge
 - **\$25M**
- I-69 Connector
 - **\$250M**
- US 281 Connector
 - **\$140M**

\$1.7 Billion Planning Phase.