

THE STATE OF TEXAS §

COUNTY OF CAMERON §

BE IT REMEMBERED on the 14<sup>th</sup> day of May 2015, there was conducted a Regular Meeting of the Cameron County Regional Mobility Authority, at the Joe G. Rivera and Aurora de la Garza County Annex thereof, in San Benito, Texas, for the purpose of transacting any and all business that may lawfully be brought before the same.

THE BOARD MET AT:

12:00 Noon

PRESENT:

DAVID E. ALLEX  
CHAIRPERSON

\_\_\_\_\_  
DIRECTOR

DAVID N. GARZA  
DIRECTOR

\_\_\_\_\_  
DIRECTOR

MARK ESPARZA  
DIRECTOR

NAT LOPEZ  
DIRECTOR

HORACIO BARRERA  
DIRECTOR

\_\_\_\_\_  
Secretary

MICHAEL SCAIEF  
ABSENT

RUBEN GALLEGOS, JR.  
ABSENT

\_\_\_\_\_  
ABSENT

=====

The Meeting was called to order by Chairman David E. Allex, at 12:01 P.M. At this time, the Board considered the following matters as per RMA Agenda posted and filed for Record in the Office of the County Clerk on this 11<sup>th</sup> day of May 2015 at 9:53 A.M.



## **AGENDA**

**Regular Meeting of the Board of Directors  
of the  
Cameron County Regional Mobility Authority**

**Joe G. Rivera and Aurora de la Garza County Annex  
1390 West I69E  
San Benito, Texas 78586**

**Thursday, May 14, 2015**

**12:00 Noon**

Accepted for Filing in:  
Cameron County

On: May 11, 2015 at 09:53A

By:  
Alejandro Cuellar

### **PUBLIC COMMENTS:**

#### **1. Public Comments**

### **PRESENTATIONS, RESOLUTIONS AND/OR PROCLAMATION ITEMS:**

#### **2. Presentations/Resolutions/Proclamations**

- A. Presentation of the 2014 Independent Financial Audit Report**
- B. Presentation and Acknowledgement of the GEC Report for April 2015**
- C. Presentation of the Status of the SH 550 Direct Connector Project for April 2015**
- D. Presentation of the Marketing Efforts for the Month of April 2015**

### **CONSENT ITEMS:**

- 3. All Item(s) under the Consent RMA Agenda are heard collectively unless opposition is presented, in which case the contested Item will be considered, discussed, and appropriate action taken separately**

#### **A. Consideration and Approval of the Minutes for:**

**April 9, 2015 – Regular Meeting**

### **ITEMS FOR DISCUSSION AND ACTION:**

#### **4. Action Items**

- A. Approval of Claims**

- B. Consideration and Approval of the monthly Financial Statements for March and April 2015**
- C. Consideration and Approval of Task Order for Back Office System and Customer Service Center, Phase II with Fagan Consulting**
- D. Consideration and Approval of a Contract between the Cameron County Regional Mobility Authority and The Revenue Markets, Inc. to develop the initial scope of the Bridge Interoperability between Cameron County and the City of Pharr**
- E. Presentation by Swampbox Environmental Services regarding a mitigation bank**
- F. Presentation by Resource Environmental Services regarding a mitigation bank**

**EXECUTIVE SESSION:**

**5. Executive Session**


- A. Confer with Cameron County Regional Mobility Authority Legal Counsel regarding possible contract issues with Anderson Columbia, pursuant to V.T.C.A., Government Code, Section 551.071(2).**
- B. Deliberation and Discussion regarding acquisition of Parcel 9, for the West Rail Relocation Project pursuant to Vernon Texas Code Annotated (V.T.C.A.), Government Code, Section 551.072**

**6. Action Relative to Executive Session**

- A. Possible Action**
- B. Possible Action**

**ADJOURNMENT:**

Signed this 11<sup>th</sup> day of May 2015



\_\_\_\_\_  
**David E. Allen**  
**Chairman**

**NOTE:**

**Participation by Telephone Conference Call** – One or more members of the CCRMA Board of Directors may participate in this meeting through a telephone conference call, as authorized by Sec. 370.262, Texas Transportation Code. Each part of the telephone conference call meeting that by law must be open to the public shall be audible to the public at the meeting location and will be recorded. On conclusion of the meeting, the recording will be made available to the public.



## **SUPPLEMENTAL NOTICE AGENDA**

**Regular Meeting of the Board of Directors  
of the  
Cameron County Regional Mobility Authority**

**Joe G. Rivera and Aurora de la Garza County Annex  
1390 West I69E  
San Benito, Texas 78586**

**Thursday, May 14, 2015**

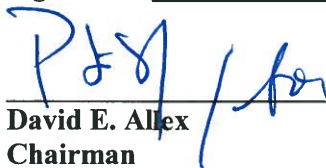
**12:00 Noon**

### **1. Action Items**

**A. Consideration and Approval of Budget Amendment No. 1 for FY 2015.**

### **ADJOURNMENT:**

Signed this 11<sup>th</sup> day of May 2015

  
\_\_\_\_\_  
**David E. Alex**  
**Chairman**

FILED AND RECORDED  
OFFICIAL PUBLIC RECORDS  
On: May 11, 2015 at 11:16A

Sylvia Garza-Perez  
County Clerk  
By  
David Jacinto, Deputy  
Cameron County

### **NOTE:**

**Participation by Telephone Conference Call** – One or more members of the CCRMA Board of Directors may participate in this meeting through a telephone conference call, as authorized by Sec. 370.262, Texas Transportation Code. Each part of the telephone conference call meeting that by law must be open to the public shall be audible to the public at the meeting location and will be recorded. On conclusion of the meeting, the recording will be made available to the public.





To: Pete Sepulveda

From: Adrian Rincones

Date: 4.30.2015

Re: Budget Amendment #1 FY2015

**Description:**

This budget amendment will re-allocate funds budgeted for Office Rent in our Rent Expense GL and funds from our Contingency funds to Office Supplies, Dues & Memberships, and Advertising GL's. We had budgeted funds for office rent expecting we may have rented office space for an office headquarters, however in December 2014 we purchased an office building. This purchase and relocation to a new office resulted in expenses for furniture, office supplies, and equipment requiring the allocation from our contingency funds to these categories. We are also allocating more funds to our marketing budget to cover additional Marketing Expenses for our Direct Connector project. Our contribution to the I69 Alliance used up most of our Dues & Membership budget, so this allocation will provide additional funds to cover some future expenses in the dues and membership category.

				Budget		
		Current		Amended	Net Change	
1	60180 Office Supplies	\$ 11,150.00	\$	25,250.00	\$ 14,100.00	
	60150 Dues & Memberships	\$ 9,500.00	\$	14,500.00	\$ 5,000.00	
	60120 Advertising & Marketing	\$ 45,000.00	\$	55,500.00	\$ 10,500.00	
	60165 Repairs & Maintenance	\$ -	\$	15,000.00	\$ 15,000.00	
	60190 Rent	\$ 25,600.00	\$	8,000.00	\$ (17,600.00)	
	60130 Contractual	\$ 560,679.00	\$	533,679.00	\$ (27,000.00)	
Total		\$ 651,929.00	\$	651,929.00	\$ -	

Pete Sepulveda, Jr. Executive Director

5.5.5  
Date

---

## **PUBLIC COMMENTS**

### **1 PUBLIC COMMENTS**

None were presented.

---

## **PRESENTATIONS, RESOLUTIONS AND/OR PROCLAMATION ITEMS**

### **2-A Presentation of the 2014 Independent Financial Audit Report**

Mr. Santos Alarcon with Long Chilton presented the 2014 Independent Financial Audit Report. Mr. Alarcon stated that it was a clean audit and that items brought up in prior audits have been properly addressed. Enclosed is the 2014 Financial Report.

**NOTE: Director Horacio Barrera arrived at 12:11 P.M.**

Director Garza moved to acknowledge the 2014 Independent Financial Audit Report. The motion was seconded by Director Barrera and carried unanimously.

**The Report is as follows:**

---

### **2-B Presentation and Acknowledgement of the GEC Report for April 2015**

Mr. Richard Ridings with HNTB went over the status of Cameron County Regional Mobility Authority Projects.

Director Esparza moved to acknowledge the GEC Report for April 2015. The motion was seconded by Director Lopez and carried unanimously.

**The Report is as follows:**

---

**2-C Presentation of the Status of the SH 550 Direct Connector Project for April 2015**

Mr. Agustin Ramirez from S&B Infrastructure went over a Power Point Presentation in providing a status report for the SH 550 Direct Connector Project. The power point is attached.

Director Barrera moved to acknowledge the report on the SH 550 Direct Connector Project. The motion was seconded by Director Lopez and carried unanimously.

**The Power Point Presentation is as follows:**

---

**2-D Presentation of the Marketing Efforts for the Month of April 2015**

Mrs. Michelle Lopez, RMA Marketing and Communications Director went over a status report for the month of April 2015. The report is attached.

Director Esparza moved to acknowledge the marketing report. The motion was seconded by Secretary Garza and carried unanimously.

**The Report is as follows:**

---

## **CONSENT ITEMS**

**ALL ITEM(S) UNDER THE CONSENT RMA AGENDA ARE HEARD COLLECTIVELY UNLESS OPPOSITION IS PRESENTED, IN WHICH CASE THE CONTESTED ITEM WILL BE CONSIDERED, DISCUSSED AND APPROPRIATE ACTION TAKEN SEPARATELY**

### **3-A Consideration and Approval of the Minutes for:**

#### **April 9, 2015 – Regular Meeting**

Director Barrera moved to approve the minutes of April 9, 2015 Regular Meeting. The motion was seconded by Director Esparza and carried unanimously.

## **ACTION ITEMS**

### **4-A Approval of Claims**

The attached claims were presented to the Board of Directors for approval.

Mr. Pete Sepulveda, Jr., RMA Executive Director introduced the claims into the record and recommended approval of the Claims.

Secretary Garza moved to approve the Claims. The motion was seconded by Director Barrera and carried unanimously.

**The Claims are as follows:**

---

### **4-B Consideration and Approval of the monthly Financial Statements for March and April 2015**

Mr. Adrian Rincones, RMA Controller and Financial Officer went over the attached Financial Statements for the months of March and April 2015.

Director Barrera moved to approve the Financials for the months of March and April 2015. The motion was seconded by Director Lopez and carried unanimously.

**The Financials are as follows:**

---

**4-C Consideration and Approval of Task Order for Back Office System and Customer Service Center, Phase II with Fagan Consulting**

Mr. Adrian Rincones, RMA Controller and Financial Officer went over the need for the Task Order with Fagan Consulting.

Secretary Garza moved to approve the Task Order with Fagan Consulting. The motion was seconded by Director Barrera and carried unanimously.

**The Task Order is as follows:**

---

**4-D Consideration and Approval of a Contract between the Cameron County Regional Mobility Authority and The Revenue Markets, Inc. to develop the initial scope of the Bridge Interoperability between Cameron County and the City of Pharr**

Mr. Adrian Rincones, RMA Controller and Financial Officer went over the Agreement with The Revenue Markets.

Director Esparza moved to approve the Agreement with The Revenue Markets. The motion was seconded by Director Barrera and carried unanimously.

---

**4-E Presentation by Swampbox Environmental Services regarding a mitigation bank**

Secretary Garza moved to **TABLE** the item. The motion was seconded by Director Lopez and carried unanimously.

---

**4-F Presentation by Resource Environmental Services regarding a mitigation bank**

Mr. Russ Krause and Mr. David Joyce with Resource Environmental Services went over a detailed presentation regarding the creation of a mitigation bank. Attached is the power point presentation

**NOTE: Chairman David E. Alex left the Meeting at 1:23 P.M. and Secretary David N. Garza presided over the rest of the Meeting**

Director Esparza move the acknowledge the presentation. The motion was seconded by Director Barrera and carried unanimously.

---

---

## **EXECUTIVE SESSION ITEMS**

Director Barrera moved to go into Executive Session. The motion was seconded by Director Esparza and carried unanimously, the Board met in Executive Session at 1:37 P.M. to discuss the following matter(s):

### **EXECUTIVE SESSION:**

- 5-A Confer with Cameron County Regional Mobility Authority Legal Counsel regarding possible contract issues with Anderson Columbia, pursuant to V.T.C.A., Government Code, Section 551.071(2)**
- 5-B Deliberation and Discussion regarding acquisition of Parcel 9, for the West Rail Relocation Project pursuant to Vernon Texas Code Annotated V.T.C.A.), Government Code, Section 551.072**

Upon motion by Director Esparza seconded by Director Lopez and carried unanimously, the Board reconvened into open Session at 1:53 P.M.

---

### **ACTION RELATIVE TO EXECUTIVE SESSION:**

- 6-A Confer with Cameron County Regional Mobility Authority Legal Counsel regarding possible contract issues with Anderson Columbia, pursuant to V.T.C.A., Government Code, Section 551.071(2)**

Director Esparza moved to acknowledge report of Counsel. The motion was seconded by Director Lopez and carried unanimously.

- 
- 6-B Deliberation and Discussion regarding acquisition of Parcel 9, for the West Rail Relocation Project pursuant to Vernon Texas Code Annotated V.T.C.A.), Government Code, Section 551.072**

Director Esparza moved to **TABLE** the item. The motion was seconded by Director Lopez and carried as follows:

AYE: Chairman Alex, Secretary Garza, Director Esparza and Director Lopez

NAY: None

ABSTAIN: Director Barrera

---

**SUPPLEMENTAL NOTICE: ACTION ITEM 1:**

**1-A Consideration and Approval of Budget Amendment No. 1 for FY 2015**

Director Lopez moved to approve Budget Amendment No. 1 for FY 2015. The motion was seconded by Director Esparza and carried unanimously.

**The Budget Amendment is as follows:**

**ADJOURNMENT**

There being no further business to come before the Board and upon motion by Director Lopez seconded by Director Esparza and carried unanimously the meeting was **ADJOURNED** at 1:54 P.M.

APPROVED this 4<sup>th</sup> day of June 2015.

  
\_\_\_\_\_  
CHAIRMAN DAVID E. ALEX

ATTESTED:   
\_\_\_\_\_  
SECRETARY DAVID N. GARZA

**2-A    PRESENTATION OF THE 2014 INDEPENDENT FINANCIAL AUDIT  
REPORT**



**2-B    PRESENTATION AND ACKNOWLEDGEMENT OF THE GEC REPORT  
FOR APRIL 2015**

Pete Sepulveda, Jr.  
Executive Director  
Cameron County Regional Mobility Authority  
1100 East Monroe Street  
Brownsville, Texas 78520



May 4, 2015

Dear Mr. Sepulveda,

The following is a summary of our progress on the subject projects for the month of April 2015.

**Project Management:**

**General GEC**

- Prepared & submitted CCRMA GEC Invoice for work performed on various Work Authorizations from Previous Contract (PC) and Current Contract (CC). Updated and submitted March 2015 GEC report.
- On April 9<sup>th</sup>, Richard Ridings and Greg Garcia attended the Regular Meeting of the CCRMA Board of Directors.
- Assisted CCRMA Controller on activities involving reporting and documentation of invoicing, progress reports and other accounting/billing matters.

**West Rail Relocation International Coordination (CC – Work Authorization No. 4):**

*This Work Authorization provides appropriate subconsultant(s) for staff coordination with the Mexican agencies to monitor and determine project schedules, permit requirements, funding technical agreements and design for the West Rail Relocation around Brownsville, Texas. The project plans will require approval by Secretaría de Comunicaciones y Transportes (SCT), Comisión Internacional de Limites Y Aguas (CILA) and Kansas City Southern Mexico (KCSM).*

- Construction progress on the Mexican side:
  - International Bridge, 100%
  - Roadway and Patios, 100%
- During a Thursday, April 9<sup>th</sup> visit to the new rail crossing facilities, the following progress was noted:
  - Gamma Rays. Regarding their relocation on the Mexican side, a memorandum was received on March 25 from Lic. Martha Elena Cantero, a LEIDOS representative, which reads as follows :  
“Regarding the reference contract for the relocation of the non-intrusive revision equipment, which utilizes gamma rays technology, serial number VR00007, property of Tributary Administration Services (SAT) I inform you that according to instructions received from SAT dated January 30, 2015, the equipment relocation

activities have taken place, to the effect that the equipment has been installed, has been tested and is ready to operate in its new location at km 6+400 at the new Railroad Bypass of Matamoros. In addition, I am affixing photographs taken by LEIDOS personnel on March 11, 2015, as evidence of the state of the equipment on its new site. This is the date when our personnel left the site. It is important to mention also, that as an express request from SAT and for security reasons, accessories and components located in the equipment's operation cabin in its former location have not been removed. Corresponding instruction from SAT has not been received, nevertheless this has not been an obstacle to conducting successful tests on operation of equipment in its new site, and relocation of the remaining components can be completed in few hours as soon as SAT gives instruction to do so.

Therefore, we wish to inform you that our client is ready to carry out the delivery-receipt of equipment at its new site in the stipulated terms of Clause Seven of the reference contract as soon as the SAT and SCT determine it is convenient to do so.

Finally, it is essential to emphasize that the new site at which the equipment is currently installed is a very isolated place located in an area of high insecurity and, according to our view, lacking adequate protection for both staff and the team, as well as the equipment, so we reiterate the critical importance of the relevant authorities from the Mexican Government taking appropriate security measures to ensure the continued integrity of the team under the responsibility of the SAT. "

- Customs and Senasica inspection platforms. Lic. Israel Falcon Jimenez, Resident II of Construction at the SCT Tamaulipas Center, stated that it is 100% complete and the roof was completed. However, at the time of testing, they realized that wider cars cannot pass. Therefore, tests will be conducted in the next two weeks to take appropriate measures to address this.
- The perimeter fence requested by the Customs General Administration is 100% complete.
- The Kansas City Southern de Mexico telecommunications tower is 100% complete.
- The structure for the relocation of Gamma Rays is 100% complete.
- Construction to prevent flooding in the driveway are 95% complete and are expected to be finished by April 30, 2015.
- The three surveillance booths. They will enter the bidding process and its construction will last a month and a half. They are expected to be complete by June.
- On April 13, 2015 a meeting with the new Director General of Railway and Multimodal Transport, Lic. Guillermo Nevares Elizondo, which was also attended by Lic. Fernando Tehuintle

Basanez, Deputy Director General of Multimodal Transport and Logistics. During the meeting the issue of International Railway Project Brownsville-Matamoros was exposed. Also, issues of delivery- reception, security and the start of rail operations were discussed.

- Regarding security at the international bridge and patios on the Mexican side, a meeting was held in the city of Matamoros on March 23 with representatives from Highway Development General Administration, the municipality of Matamoros and federal security agencies. An agreement was reached that the Department of the Navy from the Mexican side will guard the premises and it was agreed that they would coordinate with Engineer Sofía Manzano Loza, Resident in Construction at the SCT Center in Tamaulipas who will deliver the keys and allow a group of four active duty personnel to safeguard the Gamma Rays equipment.

The deputy admiral requested, under the reciprocity principle, support for the active duty personnel by presenting a list of needs to Lic. Marco Antonio Frías Galván, Adjunct Executive Director of Highway Development at the Ministry of Communications and Transport and Dr. Arturo de las Fuentes committed to immediately deliver the list to Customs Executive Director to accelerate the process and be able to count with the protection from the navy as soon as possible. In addition, they offered to write a letter explaining the risks the guards could run being inside the Gamma Rays facilities. Due to certain Mexican federal agency limitations, the prior could not be requested through SEMAR, so two actions must be taken:

The first is a request that the Ministry of Foreign Relations intercede with the Navy for protection of the facilities; the second is that the Municipality of Matamoros conduct a meeting on Friday with Navy officials to underline the importance of protection of the Gamma Rays equipment and the importance of guards staying at the facilities.

KCSM delivered household goods to Customs General Administration, so the Navy will be at the patios until the date when the construction is delivered officially to KCSM and to Customs General Administration, who is responsible for security at the premises.

- Regarding progress on the American side, a letter signed by Pete Sepulveda, Cameron County Judge and Tony Martínez, Mayor of Brownsville, was received, in which they express to Steven C. Kameny of the Department of State, that on the 2nd of April of this year, a final inspection visit was made on the United States side, during which all parties agreed that it is ready for operation. (City of Brownsville, Cameron County, Cameron County Regional Mobility Authority, DHS, CBP. UPRR and the construction company). It was also stated that the endorsement of the Presidential Permit and some lighting was missing, but this does not impeded the start of operations.
- Regarding the delivery-reception process of the new premises from the Ministry of Communications and Transport (SCT) to Kansas City Southern Mexico (KCSM), which took place on March 24 at 11:00 a.m., the 3rd Technical Infrastructure, Operation and Legal Working Group reviewed the detachment of section KmF-328+017.60 to KmF-330+570.00 from the F line and the delivery-reception of the Matamoros Railroad Bypass, the new railroad patio and the new International Bridge , by the Ministry of Communications and Transports to Kansas City Southern Mexico. Agreements reached:
  - Engineer Alfredo Briano, presented on progress of the Matamoros Railroad By pass.

- KCSM representatives asked for a week to present on the subject of International Crews. This was in response to the petition from the Director Railroad Regulation, derived from the request from the Ministry of Foreign Relations.
- Dr. Vladimir Robles cited concerns regarding security from the northernmost point of the patio to the international bridge and the necessity of confinement so that in the space between the gamma rays and the bridge, the possibility of altering the merchandise detected by the gamma rays is diminished.
- The Director of Railroad Regulations considers this issue implies matters of public security where different authorities intervene and that it is the obligation of the SCT to guarantee operative security.
- The Director of Railroad Regulations asked representatives from KCSM how long after the SCT/KCSM agreement is delivered will it be signed.
- Once DGTFM submits the executive project, including the signed and scanned maps according to SCT formalities, the agreement will be delivered to KCSM for signature according to the Executive Director's agenda.
- The steps to follow for final delivery to KCSM would be:
  1. Signature of agreement KCSM/ DGTFM.
  2. Verify the state of the Railroad bypass and facilities DGTFM/DC/CSCTT/KCSM.
  3. Verify the state of the current KCSM/DGTFM/CSCTT facilities.
  4. Physical delivery of the railroad bypass to KCSM.
  5. Future agreement by INDAABIN to Highway Development.

It was agreed that the process will try to be condensed so that Kansas City Southern of Mexico can begin operating the rail patios and Customs General Administration and SENASICA can begin operations. The process is expected to be complete by July 15.

- On Thursday, April 9, at 4:00 p.m., there was a visit to the patios and new Brownsville-Matamoros International Railroad Bridge, by a delegation from the National Chamber of Industry and Transformation (CANACINTRA).
- The date for the 82nd Technical Meeting is Friday, May 8, 2015 at 10:30 am.

**South Padre Island Second Access Phase 3A & 3B (PC – Work Authorization No. 17 and CC – Work Authorization No. 2):**

*This Work Authorization provides engineering and environmental services associated with the development and advancement of the NEPA process for the proposed South Padre Island (SPI) 2nd Access Project in Cameron County, Texas. The proposed Project will provide an alternate route to the Queen Isabella Memorial Causeway; thus, enhancing local and regional mobility, and facilitating effective evacuation of the island in times of disaster, hurricanes, and other emergencies. This Work Authorization continues the environmental and corridor alternatives assessment tasks necessary to advance the project to a selection of a Recommended Preferred Alternative and ultimately to a Record of Decision (ROD). After the selection of a Preferred Alternative a supplement for schematic design and the FEIS will be required.*

- HNTB continues to provide assistance and information to CCRMA Board and staff, members of the general public and stakeholders.

- Coordination, including weekly meetings, with TxDOT Pharr District, TxDOT ENV and FHWA has been on-going regarding the FEIS tasks.
- Submitted responses to TxDOT's 90% submittal comments.
- Continued coordination with subconsultants on route and design studies for preparation of 100% submittal (i.e. typical sections, geometric design, preliminary cross sections, preliminary traffic control, 3D modeling, and schematic plan preparation, preliminary construction cost estimate, hydrology, hydraulic studies, drainage design and preliminary bridge layouts).
- CCRMA, TxDOT, subconsultant, and HNTB personnel participated in a two (2) day FEIS and roadway workshop held at the TxDOT Austin division campus on March 30<sup>th</sup> –31<sup>st</sup>.
- Coordinated with TxDOT Pharr district to include project in STIP.
- Revised master design schedule and submitted to subconsultants for review.
- Submitted traffic forecast approval request for distribution to TxDOT on April 7<sup>th</sup>.
- Continued coordination with subconsultants on geotechnical services.
- Summary report of Context Sensitive Solutions (CSS) workshops and survey results are complete and undergoing internal review.
- First draft of Final EIS (12/23) in review by CCRMA, TxDOT-Pharr, TxDOT-ENV and FHWA (60-day review; comments due March 2).
- Coordinated with subconsultants on FEIS and permitting tasks.
- Responding to TxDOT and FHWA comments on the Seagrass/Wetland Delineation/Vegetation and Habitat Report. Finalizing impact calculations.
- Continued coordination with NMFS on questions concerning the Essential Fish Habitat Assessment.
- Continued coordination on Essential Fish Habitat Assessment review (TxDOT).
- Progressed contracting and coordination with the following subconsultants: SWCA completed remaining archeological work and received concurrence from THC. SWCA also advanced the biological assessment and submitted the revised Draft BA (04/21). Belaire environmental continued mitigation site modeling and scour assessments.
- Coordinated with GLO regarding the timing of application and upland owner coordination for utilization of the mitigation on state owned lands.

**General Brant Road/FM 106 Extension (PC – Work Authorization No. 26)**

*This work authorization provides professional services and deliverables associated with the preparation of a categorical exclusion (to be reviewed by the Federal Highway Administration in anticipation of possible federal funding) and the completion of the Section 404 permitting process (including the development of a conceptual mitigation plan) for the project.*

- No activity this billing period.

**Olmito Switch Yard & Repair-In-Place Facility (PC – Work Authorization No. 31)**

*This work authorization provides engineering services throughout the construction duration of the Olmito Switch Yard and Repair-In-Place (RIP) Facility by providing responses to the contractor's Requests for Information, Shop Drawing Review and As-Built construction plans.*

- HNTB is assisting with the completion and close out of this project.

**West Rail Bypass, CI (PC – Work Authorization No. 33)**

This work authorization provides professional services associated with construction inspection phase work for the West Rail Bypass.

- HNTB is assisting with the completion and close out of this project.

**Outer Parkway Study (CC – Work Authorization No. 3)**

This work authorization provides professional services and deliverables associated with a study for the Outer Parkway. The study is to be performed in a three phase effort to deliver a schematic design for the Outer Parkway project. The phases are:

- HNTB started on Work Authorization for the Environmental Assessment and Route Studies.
- Classification Letter was signed by TxDOT ENV on February 3<sup>rd</sup> concurring that the project be classified as an EA and that preparation of an EIS is not required.

**West Rail RFIs, As-Builts (PC – Work Authorization No. 40)**

This work authorization provides construction phase services throughout the construction of the West Rail Relocation Project by providing responses to Requests for Information from the contractor and providing As-Built construction drawings. Also, records keeping will be provided through the use of DashPort.

- No tasks performed for this month.

**SH 32 GEC Preliminary Schematic and Environmental Approval (CC – Work Authorization No. 5)**

This work authorization provides professional services for oversight, guidance, agency coordination, and issue resolution, necessary to expedite the preliminary development phases of these two SH 32 projects only. The two projects, which each have logical termini and independent utility, extend from US 77/83 to FM 3068 (herein referred to as SH 32-West) and from FM 3068 to SH 4 (herein referred to SH 32-East). The proposed projects are being developed by two prime subconsultants, (S&B Infrastructure, Ltd. and Traffic Engineers, Inc.) under the oversight of HNTB (GEC).

**SH 32 West (Consultant – Traffic Engineers, Inc., or TEI):**

- Continued project coordination with TEI.
- Archeological field was completed and report writing is underway.

**SH 32 East (Consultant - S&B Infrastructure, Ltd., or S&B):**

- Continued project coordination with S&B.
- Biological Assessment was revised per TxDOT comments, reviewed by the GEC and resubmitted to the TxDOT Pharr District for back check.

**West Rail Bridge – RFI/Shop Drawings Review and CEI for Security Fencing, Gate, Illumination, and DHS Building Components (US portion of bridge only) (PC – Work Authorization No. 69)**

- Coordinate and attend weekly progress meeting with contractor and UPRR.
- Continue to review and forward contractor's submittals.
- Cameron County, U.S. Customs & Border Protection, contractor, UPRR, and HNTB personnel performed final inspection on Thursday, April 2<sup>nd</sup>. As a result, a final inspection punch list was developed and submitted to the contractor for completion.

- The contractor continues working on the final punch list items. Completion of all the items are expected to take place by May 31, 2015.

**Consultant Management:**

- Continued coordination with subconsultants and S&B Infrastructure as prime consultant on SH 550 Construction management including discussions with USACE officials on wetland mitigation that was performed as part of this project.

**Agency Coordination:**

- Conducted ongoing discussions with CCRMA staff, TxDOT staff and subconsultants for preparation of SPI 2<sup>nd</sup> Access project (see specifics above), SH 550, Olmito Switch Yard Repair-In-Place Facility construction project, West Rail construction project, SH 32 East Loop EAs and other miscellaneous items.

Best regards,



Richard L. Ridings, P.E.

Vice President

cc: Carlos Lopez, P.E.



**HNTB**

WA Amount:	\$	9,645,641.00	Outstanding Invoice Number	Days Old		Invoice Amount
Billed To Date:	\$	8,836,535.56	112-40619-PL-017	77	\$	121,178.75
Paid To Date:	\$	8,424,020.16	113-40619-PL-017	49	\$	119,151.71
Unpaid Balance:	\$	412,515.40	114-40619-PL-017	14	\$	172,184.94
Funding Source:						
Total:	\$					412,515.40

# April Status Report

# HNTB

Project		West Rail Construction & Inspection Services
Work Authorization	33	Construction & Inspection Services
Supplemental	2	Construction & Inspection Services
Supplemental	1	Construction & Inspection Services

WA Cost: \$ 1,255,920.00

SA Cost: \$ 358,021.00

SA Cost: \$ 48,623.00

Total Cost: \$ 1,662,564.00

**Description:** This Work Authorization is to provide construction inspection (CI) for the Union Pacific Railroad (UPRR) West Rail Bypass. The construction of these additional tracks will allow the UPRR to abandon their current location between Mexico and Olmito eliminating several grade crossings.

**Scope:** Construction administration for the construction of the West Rail relocation. The construction includes track, drainage, construction sequencing, SWPPP, pay estimates, quantities, and schedule. This includes the DHS facility on the north side of US 281.

**Deliverable:** West Rail bypass pay estimates, ARRA paperwork, and construction schedule.

## Project Activity

### West Rail Bypass Construction Inspection

Status: Ongoing.

Recent Activity:	Contractor has completed track construction and is performing a final cleaning up. Coordination with USACE on mitigation site non-compliance.
Upcoming Activity:	Clean up.
Outstanding Issues:	Awaiting resolution of DHS change order items and the associated funding. Awaiting approval of outstanding SWAs.

Task	Status	Anticipated Completion	% Complete
<b>West Rail Construction Inspection Services (CI)</b>			
Project Management, Administration, QA/QC	Complete	10/21/2013	100%
Process Invoices and Progress Reports	Complete	10/21/2013	100%
<b>Construction Inspection Services</b>			
Construction Management	Complete	10/21/2013	100%
Construction Observation and Inspection	Complete	10/21/2013	100%
Record Keeping and File Management	Complete	10/21/2013	100%
Schedule	Complete	10/21/2013	100%
<b>Project Close-Out</b>			
Construction Management	Complete	10/21/2013	100%
Record Keeping and File Management	Complete	10/21/2013	100%
Post Construction Services	Ongoing	10/21/2013	90%
WA Amount: \$	1,662,564.00	Outstanding Invoice Number	Days Old
Billed To Date: \$	1,650,298.05		Invoice Amount
Paid To Date: \$	1,650,298.05		
Unpaid Balance: \$	-		
Funding Source:			
Total: \$ -			

# April Status Report

**HNTB**

Project		West Rail RFI, As-Builts
Work Authorization	<input checked="" type="checkbox"/> 40	West Rail RFI, As-Builts
Supplemental	<input type="checkbox"/>	
Supplemental	<input type="checkbox"/>	
Supplemental	<input type="checkbox"/>	

WA Cost: \$ 171,150.00

SA Cost: \_\_\_\_\_

SA Cost: \_\_\_\_\_

SA Cost: \_\_\_\_\_

Total Cost: \$ 171,150.00

**Description:** This Work Authorization is to provide response to questions related to the plans and specifications as needed throughout the duration of the construction and review of shop drawings.

**Scope:** Project Manager shall be the point of contact for the AUTHORITY to address issues regarding project staff, progress, response to questions related to the plans and specifications as needed throughout the duration of the construction.

**Deliverable:** Responses to RFI, as-builts and record keeping.

## Project Activity

### West Rail RFI, Shop Drawings

Status:	Respond to RFIs on an as-needed basis.
Recent Activity:	Project management (see GEC Progress Report).
Upcoming Activity:	Respond to RFIs on an as-needed basis.
Outstanding Issues:	Awaiting approval for SWAs (additional RFIs/shop drawing review/DHS coordination).

Task	Status	Anticipated Completion	% Complete
<b>West Rail RFI, Shop Drawings</b>			
Project Management	Complete	10/21/2013	100%
Respond to Requests for Information	Complete	10/21/2013	100%
WA Amount: \$	171,150.00	Outstanding Invoice Number	Days Old
Billed To Date: \$	498,576.00		Invoice Amount
Paid To Date: \$	498,576.00		
Unpaid Balance: \$	-		
Funding Source:			
Total: \$ -			

# April Status Report

# HNTB

Project	<u>Olmito RIP CI Services</u>
Work Authorization	<input checked="" type="checkbox"/> 47 Construction & Inspection Services
Supplemental	<input type="checkbox"/>
Supplemental	<input type="checkbox"/>
Supplemental	<input type="checkbox"/>

WA Cost: \$ 134,538.00

SA Cost: \$ -

SA Cost:

SA Cost:

Total Cost: \$ 134,538.00

**Description:** This Work Authorization is to provide construction inspection (CI) for the Union Pacific Railroad (UPRR) Olmito Yard Repair in Place (RIP) Facility. The construction of this facility allow the UPRR to relocate their current repair in place operations from Harlingen to Olmito and expand their capabilities.

**Scope:** Construction administration for the Olmito Yard repair-in-place (RIP) facility and lighting. This includes building, equipment, track, drainage, construction sequencing, SWPPP, pay estimates, quantities, and schedule.

**Deliverable:** Olmito RIP Facility pay estimates, ARRA paperwork, and construction schedule.

## Project Activity

### Olmito RIP Facility Construction Inspection Services (CI)

Status:	Construction at 99% complete.
Recent Activity:	None.
Upcoming Activity:	BPUB to energize water line. Schedule final walk through with UPRR for facility acceptance.
Outstanding Issues:	Awaiting resolution on outstanding SWA. The County had been sent a request to provide warranty deed or metes and bounds for water/sewer line and submit payment on impact fees for both to BPUB.

Task	Status	Anticipated Completion	% Complete
<b>Olmito RIP Facility Construction Inspection Services (CI)</b>			
Project Management, Administration, QA/QC	Ongoing	1/31/2013	100%
Process Invoices and Progress Reports	Ongoing	1/31/2013	100%
<b>Construction Inspection Services</b>			
Construction Management	Ongoing	1/31/2013	100%
Construction Observation and Inspection	Ongoing	1/31/2013	100%
Record Keeping and File Management	Ongoing	1/31/2013	100%
Schedule	Ongoing	1/31/2013	100%
<b>Project Close-Out</b>			
Construction Management	Ongoing	1/31/2013	95%
Record Keeping and File Management	Ongoing	1/31/2013	95%

WA Amount:	\$	134,538.00	Outstanding Invoice Number	Days Old	Invoice Amount
Billed To Date:	\$	134,538.00			
Paid To Date:	\$	134,538.00			
Unpaid Balance:	\$	-			
Funding Source:					
Total:					\$ -

# April Status Report

# HNTB

Project		SH 32 GEC
Work Authorization	49	SH 32 GEC
Supplemental	1	SH 32 GEC
Supplemental	2	SH 32 GEC

WA Cost: \$	1,961,997.00
SA Cost: \$	18,277.00
SA Cost: \$	243,639.00
Total Cost: \$	2,223,913.00

**Description:** This work authorization provides professional services for oversight, guidance, agency coordination, and issue resolution, necessary to expedite the preliminary development phases of these two SH 32 projects only. The two projects, which each have logical termini and independent utility, extend from US 77/83 to FM 3068 (herein referred to as SH 32-West) and from FM 3068 to SH 4 (herein referred to SH 32-East). The proposed projects are being developed by two prime subconsultants, (S&B Infrastructure, Ltd. and Traffic Engineers, Inc.) under the oversight of HNTB (GEC).

**Scope:** This Work Authorization allows the GEC to oversee/manage the development of two environmental assessments being prepared for SH 32. The environmental assessments are being prepared by other firms.

**Deliverable:** Meeting notes, schedules, document reviews, permitting strategies.

## Project Activity

### East Loop EA

<b>Status:</b>	On-going. SH 32-West EA prepared. SH 32-East EA prepared.
<b>Recent Activity:</b>	Submittal of SH 32 East Biological Assessment and Antiquities Permit application to TxDOT. Submittal of Antiquities Permit application for SH 32 West to TxDOT. Value Engineering study occurred between 4/15/14 to 4/17/14.
<b>Upcoming Activity:</b>	Submittals of EA, BA and archeology results.
<b>Outstanding Issues:</b>	None

Task	Status	Date of Anticipated Completion	% Complete
<b>East Loop EA</b>			
Project Management and Coordination			97%
WA Amount: \$	2,223,913.00	Outstanding Invoice Number	Days Old
Billed To Date: \$	2,162,380.01		Invoice Amount
Paid To Date: \$	2,162,380.01		
Unpaid Balance: \$	-		
Funding Source:			
Total: \$			-

# April Status Report

# HNTB

Project International Advisor Services - Multimodal Logistic HUB  
 Work Authorization ☒ 73 Cameron County International HUB  
 Supplemental ☐  
 Supplemental ☐

WA Cost: \$ 86,393.00  
 SA Cost: \$ -  
 SA Cost: \$ -  
 Total Cost: \$ 86,393.00

**Description:** This work authorization provides appropriate subconsultant(s) for staff coordination with the Mexican agencies to develop and promote the Cameron County as an International Multimodal Logistics Hub (IMLH), to service the international industry, developing plans to promote and improve the infrastructure, services and systems, to offer a highly competitive and flexible logistics services.

**Scope:** This work authorization will develop and consult with the Cameron County International Multimodal Logistic HUB (IMLH) to service the International Industry and to develop marketing plans to promote and improve the infrastructure, as well as services and systems to offer highly competitive and flexible logistics services.

**Deliverable:** Meeting notes, schedules, document reviews, permitting strategies.

## Project Activity

### International Advisory Services

Status: On-going.

Recent Activity:

Stakeholder meetings.

Upcoming Activity:

Continue stakeholder meetings and workshops.

Outstanding Issues:

Task		Status	Date of Anticipated Completion	% Complete
<b>International Advisory Services</b>				
Project Management and Coordination				100%
WA Amount:	\$ 86,393.00	Outstanding Invoice Number	Days Old	Invoice Amount
Billed To Date:	\$ 79,975.00			
Paid To Date:	\$ 79,975.00			
Unpaid Balance:	\$ -			
Funding Source:				
Total:				\$ -

**2-C PRESENTATION OF THE STATUS OF THE SH 550 DIRECT  
CONNECTOR PROJECT FOR APRIL 2015**

# **CCRMA**

CAMERON COUNTY REGIONAL MOBILITY AUTHORITY

## **SH 550 CONSTRUCTION UPDATE**

**May 14, 2015**



**L & G Engineering Laboratory**

Geotechnical • Construction Material Testing



**HNTB**

TBPE FIRM REGISTRATION NO.: 420

HNTB Corporation  
The HNTB Companies  
Engineers Architects Planners



# SH 550 Key Dates



<i>-PRE-CONSTRUCTION MEETING</i>	<i>2-20-2013</i>
<i>-NTP ISSUED</i>	<i>2-23-2013</i>
<i>-ACTUAL CONST. START DATE</i>	<i>3-4-2013</i>
<i>-FEDERAL AUDIT IN FIELD</i>	<i>5-20-13</i>
<i>-97.8 % COMPLETE AS OF</i>	<i>4-25-15</i>
<i>-MILESTONE START DATE (IH 69 LANE CLOSURE)</i>	<i>11-1-13</i>
<i>-LOCAL LET GOV. PROCEDURES AUDIT</i>	<i>8-1-13</i>
<i>-TxDOT AUDIT- 30%</i>	<i>9-10-13 to 9-12-13</i>
<i>-TxDOT ENVIRONMENTAL INSPECTION-INITIAL</i>	<i>2-18-2014</i>
<i>-IH 69 LANE CLOSURE FOR DIRECT CONNECTOR BENT CONSTRUCTION (BETWEEN MAINLANES)</i>	<i>7-8-14</i>
<i>-PROJECTED CONST. END DATE -ORIGINAL</i>	<i>9-22-2014</i>



**L & G Engineering Laboratory**  
Geotechnical • Construction Material Testing



TBPE FIRM REGISTRATION NO.: 420

HNTB Corporation  
The HNTB Companies  
Engineers Architects Planners

# SH 550 Key Dates



<b>-TxDOT AUDIT- 60%-90%</b>	<b>9-11-2014</b>
<b>--TxDOT ENVIRONMENTAL INSPECTION FOLLOW-UP</b>	<b>9-11-2014</b>
<b>-PROJECTED CONST. END DATE- <i>CO#2(ADDITIONAL TIME)</i></b>	<b><i>11-13-2014</i></b>
<b>-PROJECTED CONST. END DATE-REVISED(APR. 2015)</b>	<b><i>5-1-2015</i></b>
<b>-CHANGE ORDER #3-LEVEL-UP REPAIRS COMPLETED</b>	<b><i>1-27-15</i></b>
<b>-CHANGE ORDER #4-FM 1847 OP SBML BRIDGE DECK REPAIR COMPLETED</b>	<b><i>2-10-15</i></b>
<b>-CHANGE ORDER #5-I69E ML REVISED MILL/OVERLAY QTYS COMPLETED</b>	<b><i>3-26-15</i></b>



**L & G Engineering Laboratory**  
Geotechnical • Construction Material Testing



TBPE FIRM REGISTRATION NO.: 420

HNTB Corporation  
The HNTB Companies  
Engineers Architects Planners



# Major Items of Work



ITEM	UNIT	PROJECT TOTAL	QUANTITY COMPLETED TO DATE	% COMPLETE TO DATE	PREVIOUS UPDATE (APRIL 2015) COMPLETE TO DATE
HOT MIX	TON	24,678.00	12,911.29	52.3%	52.3%
CHANGE ORDER #5 (Reduced Mill/Overlay Qtys)	TON	16,501.00	16,501.00	100.0%	74.0%



**L & G Engineering Laboratory**  
Geotechnical • Construction Material Testing



HNTB Corporation  
The HNTB Companies  
Engineers Architects Planners

TBPE FIRM REGISTRATION NO.: 420



# Major Items of Work Completed



ITEM	UNIT	PROJECT TOTAL	QUANTITY COMPLETED TO DATE	% COMPLETE TO DATE
CONCRETE PILES	EA	598.00	598.00	100.0%
BRIDGE FOOTINGS	EA	58.00	58.00	100.0%
BRIDGE COLUMNS	EA	58.00	58.00	100.0%
CAPS FORMED AND POURED	EA	38.00	38.00	100.0%
CONCRETE BEAMS	LF	28,433.31	28,433.31	100.0%
STEEL GIRDERS	LB	1,065,198.00	1,065,198.00	100.0%
RETAINING WALLS (MSE)	SF	33,549.00	33,549.00	100.0%
DRILLED SHAFTS	EA	16.00	16.00	100.0%



**L & G Engineering Laboratory**  
Geotechnical • Construction Material Testing



TBPE FIRM REGISTRATION NO.: 420

HNTB Corporation  
The HNTB Companies  
Engineers Architects Planners



# Major Items of Work Completed



ITEM	UNIT	PROJECT TOTAL	QUANTITY COMPLETED TO DATE	% COMPLETE TO DATE
EMBANKMENT	CY	305,077.00	305,077.00	100.0 %
REINFORCED CONC SLAB	SF	245,188.00	245,188.00	100.0 %
CONC PAVEMENT CRCP 12"	SY	75,246.00	75,246.00	100.0 %



**L & G Engineering Laboratory**  
Geotechnical • Construction Material Testing



**HNTB**

TBPE FIRM REGISTRATION NO.: 420

HNTB Corporation  
The HNTB Companies  
Engineers Architects Planners



# Major Items of Work



*ROW FINISHING(BEFORE) LOOKING NORTH*



**L & G Engineering Laboratory**  
Geotechnical • Construction Material Testing



TBPE FIRM REGISTRATION NO.: 420

HNTB Corporation  
The HNTB Companies  
Engineers Architects Planners



# Items of Work in Progress



*ROW FINISHING(AFTER) LOOKING SOUTH*



**L & G Engineering Laboratory**  
Geotechnical • Construction Material Testing



TBPE FIRM REGISTRATION NO.: 420

HNTB Corporation  
The HNTB Companies  
Engineers Architects Planners



# Items of Work in Progress



*HIGH MAST INSTALLATION*



**L & G Engineering Laboratory**  
Geotechnical • Construction Material Testing



**HNTB**

TBPE FIRM REGISTRATION NO.: 420

HNTB Corporation  
The HNTB Companies  
Engineers Architects Planners



# Items of Work in Progress



*HIGH MAST INSTALLATION*



**L & G Engineering Laboratory**  
Geotechnical • Construction Material Testing



TBPE FIRM REGISTRATION NO.: 420

HNTB Corporation  
The HNTB Companies  
Engineers Architects Planners



# Items of Work in Progress



*CO#4 FM 1847 SBML BRIDGE DECK REPAIR*



**L & G Engineering Laboratory**  
Geotechnical • Construction Material Testing



TBPE FIRM REGISTRATION NO.: 420

HNTB Corporation  
The HNTB Companies  
Engineers Architects Planners



# Sub. of Pay Est. # 26 – APRIL 2015



Estimate No. 26

Original Contract Days	565	CO #2 Approved:	618 Revised Contract Days
Days Added by Change Order	0		53
Total Contract Time	565		Revised Total Contract
Contract Days Previously Billed	568		618 Time
Contract Days this Period	30		
Days Remaining	0		-126 Liquidated Damages
% Contract Time Used	100.0%		119.3% Revised Time Used

Quantities for April are Preliminary and Subject to Change upon Final Estimate Review.

Contract Amount		\$	44,203,090.25
Additional Change Order #2 Dollars		\$	34,000.00
Revised Contract Amount		\$	43,807,804.19
Previous Payments		\$	42,165,634.27
<b>Balance Due this Estimate</b>		\$	<b>159,431.33</b>
Liquidated Damages this Estimate	31 days @ \$ 4,000/day	\$	124,000.00
Liquidated Damages to Date	126 days @ \$ 4,000/day	\$	504,000.00
Net Amount Earned to Date		\$	42,325,065.60
Percentage of Contract Billed to Date			97.8%
Balance of Contract		\$	1,482,738.59



**L & G Engineering Laboratory**  
Geotechnical • Construction Material Testing



TBPE FIRM REGISTRATION NO.: 420

HNTB Corporation  
The HNTB Companies  
Engineers Architects Planners



# ADDITIONAL PROJ. COSTS SUMMARY



## CHANGE ORDERS

Change Order #1 Completed	- \$16,900.00
Traffic Control Revision	
Change Order #2 Completed	\$34,000.00
Additional Contract Time	
Change Order #3 Completed	\$60,391.36
Bridge Approach Level-Ups, FM 1847, etc.	
Change Order #4 Completed	\$191,485.84
Bridge Deck Repair-FM 1847 SBML	
Change Order #5 Completed	<u>- \$395,286.06</u>
I69E ML Revised Mill/Overlay Quantities	
Change Orders Total Cost	- \$126,308.86

## LIQUIDATED DAMAGES

126 Days @ \$4,000.00/Day	<u>- \$504,000.00</u>
---------------------------	-----------------------

<b>ADDITIONAL COSTS SUMMARY TO DATE</b>	<b>- \$630,308.86</b>
---	-----------------------



**L & G Engineering Laboratory**  
Geotechnical • Construction Material Testing



TBPE FIRM REGISTRATION NO.: 420

HNTB Corporation  
The HNTB Companies  
Engineers Architects Planners

# Local Project Staffing



## **BASED ON APRIL ESTIMATE**

**Local (RGV) Contractor Personnel – 10 Daily FTE's**

**Non-Local (RGV) Contractor Personnel – 0**

**Local (RGV) CM Personnel – 1 Daily FTE's**

**Total Personnel – 11 Daily FTE's**



**L & G Engineering Laboratory**  
Geotechnical • Construction Material Testing



**HNTB**

TBPE FIRM REGISTRATION NO.: 420

HNTB Corporation  
The HNTB Companies  
Engineers Architects Planners



# Local Project Staffing



## BASED ON APRIL #26

**Total Paid to Date (APRIL 2015 Estimate) – \$42,325,065.60**

**Local (RGV) Contractor Payments – \$36,272,581.22 (85.7%)**

**Non-Local (RGV) Contractor Payments – \$6,052,484.38 (14.3%)**

**Quantities for April are Preliminary and Subject to Change upon Final Estimate Review.**



**L & G Engineering Laboratory**  
Geotechnical • Construction Material Testing



**HNTB**

TBPE FIRM REGISTRATION NO.: 420

HNTB Corporation  
The HNTB Companies  
Engineers Architects Planners

**2-D PRESENTATION OF THE MARKETING EFFORTS FOR THE MONTH  
OF APRIL 2015**

**May 2015 Board Meeting**  
**Marketing Report**  
**Michelle A. Lopez**  
**Marketing & Communications Director**





## 1. CCRMA ANNUAL REPORT

- a. We have received 500 copies of 2014's annual report. All board members should have a physical copy in hand.
- b. We've begun distribution of the annual reports to various entities, local and state.

## 2. SH 550 DIRECT CONNECTOR ADVERTISING

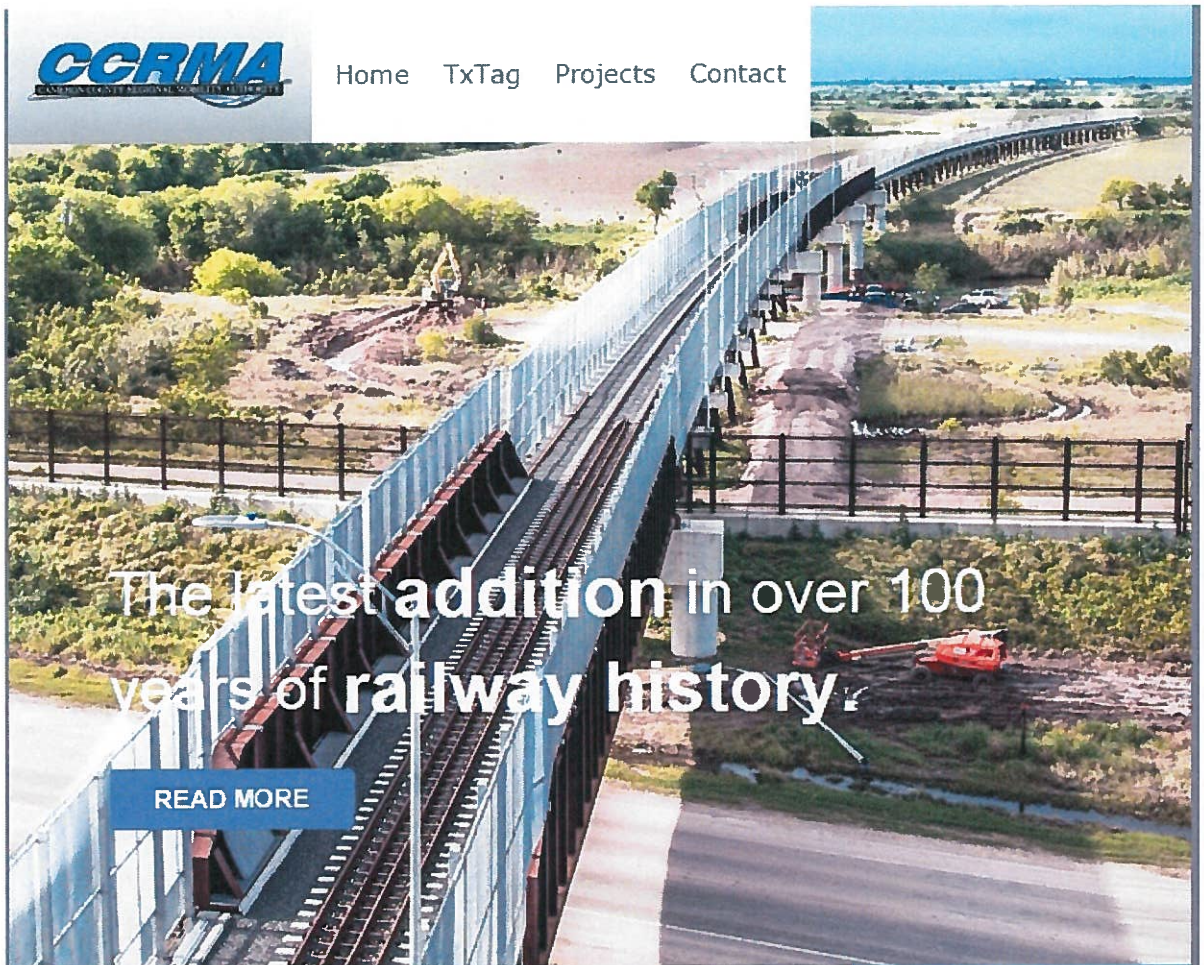
- a. Everything has been paid for to begin marketing as soon as we know when SH 550 opens.
- b. **Media Buys:**
  - i. **The Brownsville Herald:** 2 1/4 Page ads were published in a new section dedicated to inform readers about new infrastructure projects in the City of Brownsville.
  - ii. **Valley Morning Star:** 1 1/4 page ad will begin circulating when given the green light.
  - iii. **R Communication:** Radio ad package is for a total of 4 weeks (140 radio spots). "La Ley" radio station listeners consist of CDL drivers and is broadcasted simultaneously through 2 FM frequencies and online streaming. KURV, will be providing business drivers as well as PR support through its guaranteed press release submission.
  - iv. **Entravision:** A different radio spot will be produced for these broadcasts to add variation to the marketing effort. It will still maintain the primary focus of having CDL drivers test the SH 550 in addition it will also promote passenger travel through the Direct Connector.
  - v. **Rio Grande Guardian:** The Rio Grande Guardian promotes frequent mentions in news outlets such as KGBT and News Talk 710 KURV. Along with their marketable website, they provide consistent Twitter, Email, Blog, and Trade Show initiatives which expands on traffic acquisition and advert exposure. Analytics show that their target audience are "Internet-savvy" readers who keep up with border news and information.

## 3. CCRMA NEWSLETTER:

- a. We have begun design for our upcoming monthly newsletter which will be sent via email to various entities and subscribers.
- b. The newsletter will reflect recent articles regarding CCRMA, its projects and other things happening with CCRMA.
- c. Look at our newsletter below:

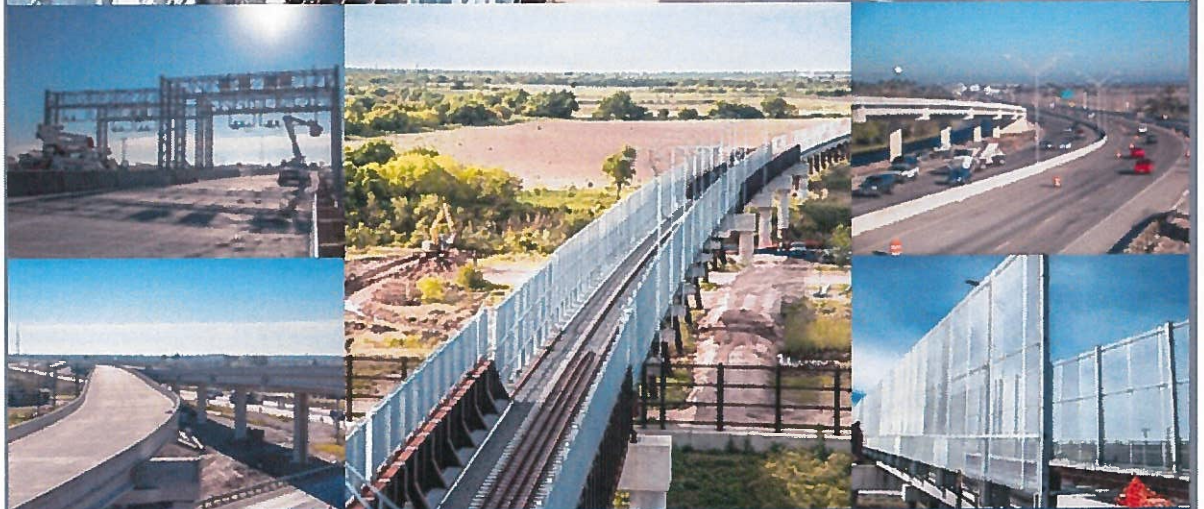


[Home](#) [TxTag](#) [Projects](#) [Contact](#)



The latest addition in over 100 years of railway history.

[READ MORE](#)



## Current Agenda

Regular Meeting of the Board of Directors  
of the CCRMA. 4/9/2015

[READ MORE +](#)

## United for Veterans

Become an active member in our  
community. Learn how you can support  
our veterans and projects.

[LEARN MORE +](#)

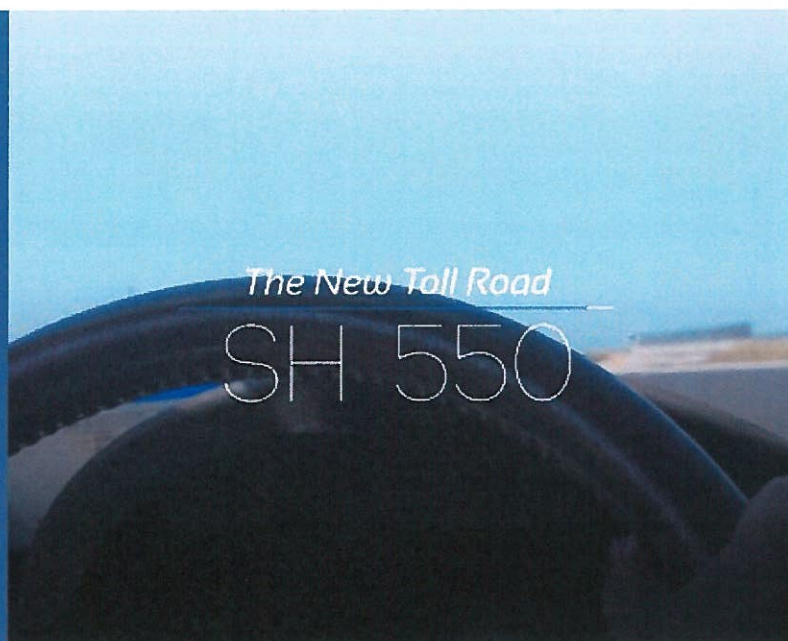


Featured

## Video

View CCRMA's commercial on  
SH 550 and TxTag.

[CLICK HERE](#)



Latest News

## FROM THE CCRMA



20 April, 2015

### County Moves Make New International Rail Bridge Happen

Even in the world of international commerce, there's a chance for county government to make an impact.

[READ MORE +](#)



20 April, 2015

### Move Texas Forward: eNewsletter

The Texas Senate approved a two-year budget last week that will now go to conference committee to sort out differences with the House version passed earlier this month.

[READ MORE +](#)



12 April, 2015

### West Rail project aims to attract companies world-wide

The finishing touches were added to the West Rail Bridge in Brownsville Sunday morning.

[READ MORE +](#)

#### 4. SOCIAL MEDIA MARKETING-

- a. During the month of April, we have refrained from posting any content due to current dialogues with community organizations and project delays that were experienced. Even though activity was kept minimal, we still noticed an increase in new users and positive engagement. In this particular month, CCRMA's website provide direct traffic to the Facebook site.

1. **Page Likes:** 3,357 Total Page Likes ↑1.8% from last month
2. **New Page Likes:** 2 New Page Likes ↑4.4% from last week
3. **Post Reach:** 2,454 Total Reach ↑100.4% from last week

#### 5. WEBSITE-

- a. CCRMA's website has seen an impressive growth in traffic due to a more aggressive brand exposure strategy that has taken place through Google AdSense and referred links. The advertisement used through Google AdSense contained the simple message of "CCRMA - Better Mobility for Cameron County. Learn More". It attracted about 2.3K visitors on average to the total mean for the month. Minor updates to the website has affected its load times and refresh rates. At the moment there are no scheduled updates. Currently an interactive map is being developed to provide better interactivity to visitors who arrive to our website.

**Avg. Page views/Month:** 15,330

**Pages/Session:** 2.36

**% New Sessions:** 72.20%

**New Visitor vs. Returning Visitor:** 72.2% / 27.8%

Regional Visits based on Traffic (US):

<b>Brownsville</b>	<b>71.87%</b>	<b>11,017 visits per month</b>
<b>McAllen</b>	<b>8.87%</b>	<b>1,359 visits per month</b>
<b>Mission</b>	<b>5.77%</b>	<b>884 visits per month</b>
<b>Harlingen</b>	<b>4.21%</b>	<b>645 visits per month</b>
<b>Pharr</b>	<b>2.42%</b>	<b>370 visits per month</b>
<b>San Benito</b>	<b>1.87%</b>	<b>286 visits per month</b>
<b>Weslaco</b>	<b>1.57%</b>	<b>240 visits per month</b>
<b>Edinburg</b>	<b>1.20%</b>	<b>183 visits per month</b>
<b>SPI</b>	<b>.91%</b>	<b>139 visits per month</b>
<b>Donna</b>	<b>.54%</b>	<b>82 visits per month</b>

List of Regions based on Traffic (MX): **4,692 visits per month**

<b>Tamaulipas</b>	41.18%	=	<b>1,908 visits per month</b>
- Matamoros			<b>1,036</b>
- Reynosa			<b>507</b>
<b>Nuevo Leon</b>	23.73%	=	<b>1,113 visits per month</b>
<b>Federal District</b>	7.63%	=	<b>357 visits per month</b>
- Mexico City			
<b>Coahuila</b>	3.39%	=	<b>159 visits per month</b>

Traffic Acquisition:

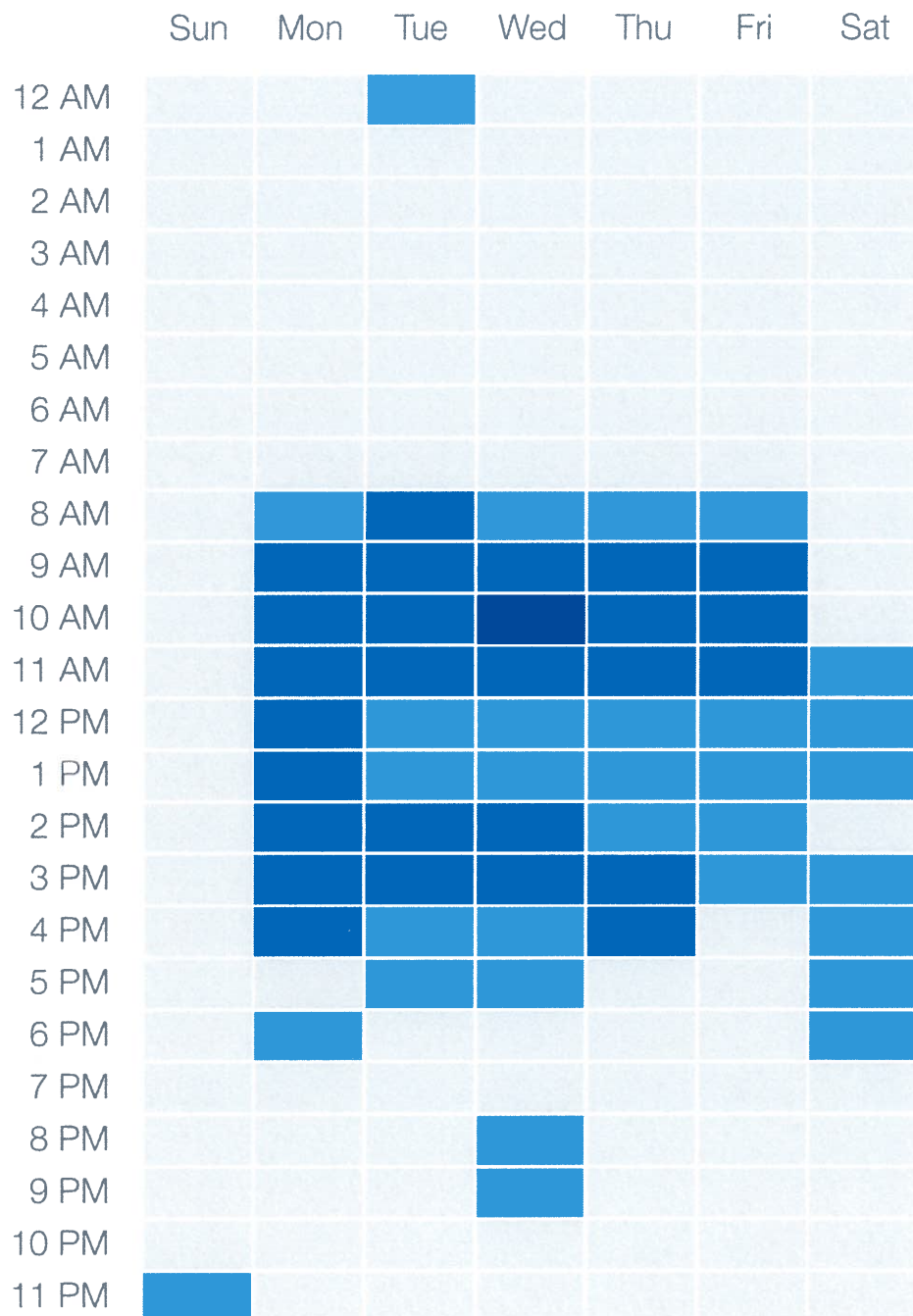
<b>Direct</b>	49.50%
<a href="http://www.ccrma.org">www.ccrma.org</a>	88.44%
<a href="http://www.ccrma.org/TxTag">www.ccrma.org/TxTag</a>	1.96%
<b>Referral</b>	25.33%
<a href="http://www.co.cameron.tx.us">www.co.cameron.tx.us</a>	36.19%
<a href="http://www.knvtv48.com">www.knvtv48.com</a>	24.89%
<a href="http://www.txdot.gov">www.txdot.gov</a>	14.09%
<b>Organic Search</b>	18.23%
Google	68.52%
Bing	18.31%
Yahoo!	11.48%
<b>Social</b>	6.94%
Facebook	83.37%
Twitter	10.64%
LinkedIn	5.99%

**Keywords used to search:** ccrma, cameron county rma, cameron county regional mobility authority, ccrma.org, ccrma board meetings, ccrma texas, ccrma projects

**Time slots:**

Darker blue time slots represent when traffic is the heaviest to the website.

Key areas to consider: Wednesdays at 10AM is when the CCRMA receives the most traffic.



**1st Level of Interaction:**

[www.ccrma.org](http://www.ccrma.org)  
[www.ccrma.org/projects/sh550](http://www.ccrma.org/projects/sh550)  
[www.ccrma.org/projects/westrailrelocation](http://www.ccrma.org/projects/westrailrelocation)  
[www.ccrma.org/spi2ndaccess](http://www.ccrma.org/spi2ndaccess)

These are the pages that have captured the most traffic. Once users visit this page, the following levels have been the next pages that they have clicked on.

**2nd Level of Interaction:**

[www.ccrma.org/txtag/](http://www.ccrma.org/txtag/)  
[www.ccrma.org/projects/](http://www.ccrma.org/projects/)  
[www.ccrma.org/projects/sh550](http://www.ccrma.org/projects/sh550)  
[www.ccrma.org/about/](http://www.ccrma.org/about/)  
[www.ccrma.org/projects/spi2ndaccess](http://www.ccrma.org/projects/spi2ndaccess)

**3rd Level of Interaction:**

[www.ccrma.org/projects/spi2ndaccess](http://www.ccrma.org/projects/spi2ndaccess)  
[www.ccrma.org/projects](http://www.ccrma.org/projects)  
[www.ccrma.org/projects/sh550](http://www.ccrma.org/projects/sh550)  
[www.ccrma.org/txtag](http://www.ccrma.org/txtag)  
[www.ccrma.org/about/agendas](http://www.ccrma.org/about/agendas)

**6. TXTAG MOBILE UNIT / UNITED FOR VETERANS CAMPAIGN-**

- a. We had our TxTag Mobile Unit at the county's vehicle registration office on April 24<sup>th</sup> and May 1<sup>st</sup>.
- b. Visited Dealerships: All on board to allow our marketing material for TxTag and Mobile Units on their busiest day, Saturdays.
  - i. Tipotex
  - ii. Boggus Ford
  - iii. Bert Ogden

**7. IN THE MEDIA:**

- a. May 6<sup>th</sup>:
  - i. Alegre Despertar: <http://www.knvtv48.com/nuevos-proyectos-de-ccrma/>
  - ii. Good Day Valley: <http://www.foxrio2.com/upcoming-projects-from-ccrma/>
- b. May 5<sup>th</sup>:
  - i. Rio Grande Guardian: <http://riograndeguardian.com/sepulveda-new-us-mexico-rail-bridge-should-be-complete-by-july/>
- c. April 20<sup>th</sup>:

- i. NACO County News: <http://www.naco.org/newsroom/countynews/Current%20Issue/4-20-2015/Pages/County-moves-make-new-international-rail-bridge-happen.aspx>
- d. April 12<sup>th</sup> :
  - i. KGBT: <http://www.valleycentral.com/news/story.aspx?id=1190295#.VUo1SF90ypp>



#### **4-A APPROVAL OF CLAIMS**



## MEMORANDUM

**TO: Chairman and Board Members**

**FROM: Pete Sepulveda, Jr.** *psj*

**RE: Claims – Item 4A**

**DATE: May 14, 2015**

---

**Attached are the Claims that are being presented for consideration and payment.**

**The Claims include:**

- **AFLAC – April AFLAC Liability**
- **Anderson Equipment – Direct Connector Construction for April 2015**
- **Cameron County – Executive Director Payroll for March 2015**
- **Cameron County – County 2013 CAF Fee**
- **CTRMA – Direct Connector ILA Successful Installation Testing and April Toll Maintenance Costs**
- **Fagan Consulting – Back Office Implementation Services for March and April 2015, International Bridge Interoperability, Implementation of Local Host Services for March 2015 and Direct Connector Toll ILA**
- **HNTB – SPI Environmental & Project Management for January 2015, West Rail RFI/CEI for February 2015, Environmental and Management Services for February 2015, West Rail RFI for February-March 2015, International Advisor Services March 2015 West Rail, SH 32 Environmental and Route Studies and SH 32 Environmental Services & Coordination for April 2015**
- **Locke Lord – Legal Services for February 2015, Legal Services of Legislative Support, Legal Services for the West Parkway Project for February 2015, Legal Services for SH 550 for February 2015, Legal Services for SPI Project for February 2015, Legal Services for FM 1925 for February 2015, Legal Services for the Outer Parkway and Legal Services for the FM 803 Project**
- **Long Chilton – 2014 Fiscal Year Audit Service**
- **S&B Infrastructure – Construction Management for April 2015**
- **VMUD – Water Utilities for Rancho Viejo Office**

**I recommend approval of the invoices.**

## CAMERON COUNTY REGIONAL MOBILITY AUTHORITY

Invoices Selected for Payment - Claims to be Paid

Vendor ID	Vendor Name	Invoice Number	Cash Required	Invoice/Credit Description
AFLAC	Aflac	636217	265.30	April Aflac Liability
Anderson Columbia	Anderson Columbia Co., Inc	3622-01-003 - 26	159,431.33	Direct Connector Construction April 2015
Cameron County	Cameron County	2015-1001100-03	21,532.96	Executive Director Payroll March 2015
Cameron County	Cameron County	County CAF 2013	16,666.67	County 2013 CAF Fee
CTRMA	Central Texas Regional Mobility Authority	7290030213	845,996.00	Direct Connector ILA Successful Installation Testing
CTRMA	Central Texas Regional Mobility Authority	7290030300	4,835.34	April Toll Maintenance Costs
Fagan Consulting	Fagan Consulting LLC	BOS-15-04	24,950.25	BOS Development and process for March - April
Fagan Consulting	Fagan Consulting LLC	IB-15-04	1,260.00	International Bridge Interop
Fagan Consulting	Fagan Consulting LLC	LH-15-04	168.00	Development on Local Host
Fagan Consulting	Fagan Consulting LLC	OS-15-04	3,236.00	Direct Connector ILA
HNTB	HNTB CORPORATION	112-40619-PL-017	121,178.75	SPI Environmental & Project Mgmt for Jan 2015
HNTB	HNTB CORPORATION	113-40619-CN-069	15,356.52	West Rail RFI/CEI for Feb 2015
HNTB	HNTB CORPORATION	113-40619-PL-017	119,151.71	Environmental and management services for Feb 2015
HNTB	HNTB CORPORATION	114-40619-CN-069	13,889.49	West Rail RFI for Feb - Mar 2015
HNTB	HNTB CORPORATION	4-62837-PL-004	10,839.30	International Advisor services March 2015 West Rail
HNTB	HNTB CORPORATION	4-62837-PL-005	48,577.20	SH32 Environmental and Route Studies
HNTB	HNTB CORPORATION	5-628374-PL-005	48,577.20	SH32 Environmental Services & Coordination April 2015
Locke Lord	Locke Lord LLP	1131406	6,424.00	Locke Lord Legal Services for February
Locke Lord	Locke Lord LLP	1131407	9,164.80	Locke Lord Legal Services for Legislative Support
Locke Lord	Locke Lord LLP	1131408	924.00	Legal services on West Pkwy project February 2015
Locke Lord	Locke Lord LLP	1131409	2,146.00	Legal services for SH550 February 2015
Locke Lord	Locke Lord LLP	1131410	140.00	Legal services for SPI Project February 2015
Locke Lord	Locke Lord LLP	1131411	1,253.00	Legal services for FM 1925 February 2015
Locke Lord	Locke Lord LLP	1131412	280.00	Legal Services for Outer Pkwy Project
Locke Lord	Locke Lord LLP	1131413	1,253.00	Legal services for FM803 project
Long Chilton	Long Chilton LLP	18949	22,000.00	2014 Fiscal Year Audit Service
S&B	S&B Infrastructure, LTD	U1965-27	10,178.46	Construction Management April 2015
VMUD	Valley Municipal Utility District	April 2015	39.45	Water utilities for Rancho Office
Report Total			1,509,714.73	



## MEMORANDUM

**TO: Chairman and Board Members**

**FROM: Pete Sepulveda, Jr.** *PSJ*

**RE: Sullivan Public Affairs Invoice – Item 4A**

**DATE: May 14, 2015**

---

Sullivan Public Affairs continues to work with the Texas Transportation Commission and TxDOT Staff in relation to the CCRMA Projects including I69E, East Loop Project, SPI 2<sup>nd</sup> Access and Outer Parkway Projects as well as on-going conference calls with both TxDOT and FHWA. Sullivan Public Affairs has also assisted in setting up meetings with the new members of the Texas Transportation Commission. Sullivan Public Affairs has also assisted with all pending legislation related to CCRMA.

**I recommend approval of the invoice for the month of April.**

# SULLIVAN PUBLIC AFFAIRS

April 29, 2015

**INVOICE #CC042015**

Pete Sepulveda, Jr.  
Cameron County Regional Mobility Authority  
1100 E. Monroe  
Brownsville, Texas 78521

**Government relations consulting  
services for April 2015 per  
January 2015 agreement**

**\$7,500**

Please remit to:

Sullivan Public Affairs  
919 Congress Avenue, Suite 1500  
Austin, Texas 78701  
*Attn: Ray Sullivan*  
512.481.0277

Tax ID # 48-13-04398

OK PSS  
4-29-15

#####



## MEMORANDUM

TO: Chairman and Board Members

FROM: Pete Sepulveda, Jr., Executive Director

*PSJ*

RE: Claims Item 4-A

DATE: May 14, 2015

---

Attached are the Claims paid on April 16, April 23 and May 8, 2015 that are being presented for Board acknowledgment.

The Claims paid on April 16<sup>th</sup> are:

- Adrian Rincones - Comptroller for Various Office Supplies Reimbursement
- County Clerk – Deposit for Recording Fees for Agendas, Deeds, etc. relating to RMA
- CTRMA – Monthly Maintenance/Monitoring cost for Toll Gantries
- Culligan Water – Drinking water for Office
- Executive Director – Reimbursement for Team Texas Travel to Austin
- Gonzalez Engineering – Survey and Mapping for West Rail Parcels
- Liz Ponce – Mileage and Office Supplies Reimbursement
- Megashine – April Office Cleaning Services
- Michelle Lopez – Mileage Reimbursement for February and March 2015
- Office World – Storage Unit for Executive Director Office
- Rentro Law Firm – March 2015 Legal Services for the West Rail
- RGV Spotlight – Installation of Exterior Signs
- Xerox – Monthly lease for Copier

The Claims paid on April 23<sup>rd</sup> are:

- Adrian Rincones – Comptroller Travel to TeamTx Meeting and Supplies Reimbursement
- Bank of New York Mellon – Administration Fee for Series 2014 Bonds
- Gerardo Guerra – TxTag Refund for Client Replenishment
- Gonzalez Engineering – Engineering & Drafting for West Rail Parcels for March 2015
- Office World – Office Chairs
- Reliant – Utilities for Rancho Viejo Office for March 2015
- RGV Spotlight – Marketing Services for March 2015

Chairman and Board Members

May 14, 2015

Page 2 – Acknowledge Claims Paid April 16, April 23 and May 8, 2015

The Claims paid on May 8<sup>th</sup> are:

- Adrian Rincones - Comptroller for Various Office Supplies Reimbursement, CPE Training, Reimbursement for Advance to Cash Drawers at New Office and Cell Phone Reimbursement
- Albert Termite & Pest Control – Monthly Pest Control
- Angel T. Torres – Lane Closure Support for Toll Maintenance
- Bank of New York Mellon – BNY Mellon Fiscal Agent Fee 2010 Bonds
- Blanca C. Betancourt - Contract Services for the Month of April 2015
- Culligan Water – Drinking water for Office for April 2015
- David A. Garza – Commissioner Garza Reimbursement for Travel to DC for West Rail
- Dylbia L. Vega – Legal Support for April 2015
- Francisco San Miguel – Reimbursement for Rental Equipment for Toll Maintenance and Toll Maintenance Support for April 2015
- Guerra Construction – Guardrail Repair on SH 550 Port Spur
- Megashine – Janitorial Services for May 2015
- Michelle Lopez – Cell Phone Reimbursement
- Oscar Sanchez, III – Lane Closure Support for Toll Maintenance
- PUB – Utility Services for SH 550
- Rentro Law Firm – April 2015 Legal Services for the West Rail
- RGV Spotlight – Shipping Costs for Annual Reports
- State Comptroller – Tx Coop Membership Fees
- Sullivan Public Affairs – Government Relations Consulting
- Time Warner Cable – Internet and Phone for Rancho Viejo Office
- TML – Monthly Employee Health Insurance and TML Property Insurance for April 2015
- TXU – Utilities for SH 550 Toll Equipment
- Veritext – Transcript for West Rail
- VMUD – Water Services at Rancho Viejo Office
- Xerox – Monthly lease for Copier for May 2015
- Ziegner Technologies – Monthly Hosting for Accounting Software

I recommend acknowledgment and approval of the invoices.

Check Number	Vendor Name	Transaction Description	Effective Date	Check Amount
10734	Adrian Rincones	Reimbursement for Office Supplies New Office	4/16/2015	1,115.38
	Adrian Rincones	Reimbursement for Various Office Expenses - Rancho Office	4/16/2015	3,999.73
10735	Cameron County Clerk	Addition to CC Clerk Account for recording fees	4/16/2015	100.00
10736	Central Texas Regional	Monthly Maintenance/Monitoring cost Toll Gantries	4/16/2015	4,835.34
10737	Culligan of the Rio Gran	Drinking water for office	4/16/2015	63.95
10738	Lizbeth J. Ponce	Liz mileage and office supplies reimbursement	4/16/2015	661.90
10739	Gonzalez Engineering & Survey	and mapping of parcels West Rail Project	4/16/2015	13,232.80
10740	Megashine	April Office Cleaning services	4/16/2015	1,205.00
10741	Michelle Lopez	Reimbursement Mileage for Marketing Director Feb & Mar 2015	4/16/2015	295.76
10742	Office World	Storage unit for Executive Director office	4/16/2015	239.99
10743	RGV Spotlight	Installation of Exterior signs	4/16/2015	38.20
10744	The Rentfro Law Firm, F	Legal support on West Rail Project March 2015	4/16/2015	2,751.13
10745	Xerox	Mothly lease of copy machine	4/16/2015	457.89
10746	PEDRO SEPULVEDA JR.	Travel for TeamTX meeting	4/16/2015	1,054.78
10747	Adrian Rincones	CFO travel to TeamTx meeting	4/23/2015	1,063.89
	Adrian Rincones	Reimbursment for Supplies	4/23/2015	946.30
10748	Bank of New York Mello	Administration Fee for Series 2014 Bonds	4/23/2015	1,425.00
10749	Gerardo Guerra	TxTag refund for client replenishment	4/23/2015	120.00
10750	Gonzalez Engineering &	Engineering and Drafting work on West Rail Parcels March 2015	4/23/2015	4,584.00
10751	Office World	Office chairs	4/23/2015	269.97
10752	Reliant	Utilities for March Rancho Office	4/23/2015	129.63
10753	RGV Spotlight	Marketing Services for month of March	4/23/2015	500.00
Report Total				<u>39,090.64</u>

4.16.15 + 4.23.15



## CAMERON COUNTY REGIONAL MOBILITY AUTHORITY

Invoices Selected for Payment - Claims to be Paid

Vendor ID	Vendor Name	Invoice Number	Cash Required	Invoice/Credit Description
Adrian	Adrian Rincones	AR 5.7.15	1,442.11	Reimbursement for various office supplies and CPE training
Adrian	Adrian Rincones	AR 5.8.15	66.70	Reimbursement for Advance to Cash Drawers at new office
Adrian	Adrian Rincones	AR Cell April 2015	100.00	Cell Phone Reimbursement for CFO & Marketing Director
Alert Termite & Pest	Alert Termite & Pest Control Co	6715	45.00	Monthly Pest Control
Angel T Perez	Angel Timoteo Perez	SD Angel 4-24-15	105.00	Lane Closure Support for Toll Maintenance
Blanca C. Betanco...	Blanca C. Betancourt	16	3,850.00	Administrative Support for April 2015
BNY	Bank of New York Mellon	252-1862005	4,416.00	BNY Mellon Fiscal Agent Fee 2010 Bonds
Comm David A Ga...	David A Garza	DG 5.7.15	398.49	Reimbursement for Commissioner David A Garza for Travel to DC for West Rail
Culligan	Culligan of the Rio Grande Valley	320895 - May	11.36	Culligan Water for April
DYLBIA L. VEGA	DYLBIA L JEFFERIES VEGA	DVJ April 2015	1,100.00	Legal support for April 2015
Franco San Miguel	FRANCISCO J SANMIGUEL	FS 4.24.15	198.85	Reimbursement for Rental Equipment for Toll Maintenance
Franco San Miguel	FRANCISCO J SANMIGUEL	FS April 2015	1,750.00	April Toll Maintenance Support
Guerra Construction	Guerra Construction Company	9934	2,600.00	Guardrail repair on SH550 Port Spur
Megashine	Megashine	1103	950.00	Janitorial Services for May 2015
Michelle Lopez	Michelle Lopez	ML Cell April 2015	100.00	Cell Phone Reimbursement for CFO & Marketing Director
PUB	Public Utilities Board	588837-Mar & Ap...	250.09	Utility Services on the SH550
PUB	Public Utilities Board	600710-Mar & Ap...	603.56	Utility Services on the SH550
RGV Spotlight	RGV Spotlight	REIM-CCRMA-004B	270.09	Shipping costs for Annual Reports
SD Oscar Sanchez	Oscar Sanchez III	SD Oscar 4-24-15	105.00	Lane Closure Support for Toll Maintenance
Sullivan Public Affa	Sullivan Public Affairs	CC042015	7,500.00	Government Relations Consulting
The Rentfro Law ...	The Rentfro Law Firm, PLLC.	018751	1,439.60	Legal support for West Rail Project for April Services
The Rentfro Law ...	The Rentfro Law Firm, PLLC.	018752	255.00	Legal support for West Rail Project for April Services
The Rentfro Law ...	The Rentfro Law Firm, PLLC.	018753	821.60	Legal support for West Rail Project for April Services
The Rentfro Law ...	The Rentfro Law Firm, PLLC.	018754	602.00	Legal support for West Rail Project for April Services
Time Warner Cable	Time Warner Cable Business Class	Time Warner May...	1,083.05	Internet and Phone for Rancho Office
TML	Texas Municipal League Intergovernmental Risk Pool	9384 - April 2015	7,170.25	TML Property Insurance April 2015
TML Emp Health	TML Intergovernmental Employee Benefits Pool	2015-05	4,011.68	Monthly Employee health Insurance
TX Comptroller	State Comptroller	K2017-May 2015	100.00	Tx Coop Membership Fee
TXU	TXU Energy	055001481692	903.96	Utilities on SH550 for Toll Equipment
Veritext	Veritext	TX2300963	266.29	Legal support for West Rail Project
VMUD	Valley Municipal Utility District	3-01-00668-March	43.39	Water services at Rancho Office
Xerox	Xerox	135918029	415.87	Xerox monthly lease for May 2015
ZIEGNER	ZIEGNER TECHNOLOGIES	102880	402.00	Monthly Hosting for Accounting Software
Report Total			43,376.94	

5.8.15

**4-B    CONSIDERATION AND APPROVAL OF THE MONTHLY FINANCIAL  
STATEMENTS FOR MARCH AND APRIL 2015**



## MARCH & APRIL 2015 FINANCIAL STATEMENT

Pete Sepulveda Jr. Executive Director  
Jesus Adrian Rincones CPA, CFE, Chief Financial Officer



# Table of Contents

Monthly Balance Sheet ..... 1

Monthly Statement of Revenues, Expenditures and  
Changes in Net Assets ..... 4

Monthly Statement of Cash Flows ..... 5

Monthly Capital Projects in Progress ..... 6

Toll Revenues & Expenditures ..... 9

# **CAMERON COUNTY REGIONAL MOBILITY AUTHORITY**

Balance Sheet  
As of 4/30/2015  
(In Whole Numbers)

	Current Year
<b>ASSETS</b>	
Current Assets:	
Cash and cash equivalents	
CCRMA Claims Account	(4,148)
CCRMA Operating Fund	2,597,773
TxTag - Replenishment Account	1,086
CCRMA Bond/Debt Funds	1,102,628
Total Cash and cash equivalents	3,697,338
Restricted cash accounts - debt service	
CCRMA Toll Revenue Funds	36,434
2010 A & B Pledged Revenue Funds	184,551
2010A 2014 Refunding Series	184,550
2010 A Debt Reserve	1,038,587
2010 A Debt Service	248,269
2010 B Debt Reserve	1,218,154
2010 B Debt Service	593,747
2012 Bond CAPI funds	144,323
2012 Bond Operating Fund	129,272
2012 Bond Project Funds	5,318,003
2012 Bonds Rate Stabilization Fund	990,326
2012 Bond Pledged Revenue	37,412
2012 Bonds Debt Service	339,858
2014 Refunding Series Escrow Account	671
Total Restricted cash accounts - debt service	10,464,158
Accounts receivable	
Vehicle Registration Fees - Receivable	(970)
Total Accounts receivable	(970)
Accounts receivable - other agencies	
Accounts Receivable - Other Agencies	1,159,889
Due from Other Agencies	652,740
Total Accounts receivable - other agencies	1,812,628
Total Current Assets:	15,973,155
Non Current Assets:	
Capital assets, net	
Land & Right of Way	40,000
Buildings	236,557
Improvements	29,603
Furnishings & Equipment	4,394,603
Accumulated Depreciation-Furnishings & Equipment	(515,816)
Software & Technology	84,842
Accumulated Depreciation Software & Technology	(3,958)
Infrastructure & Utilities	12,958,232
Accumulated Depreciation-Infrastructure	(647,912)
Total Capital assets, net	16,576,152
Capital projects in progress	
CIP - Planning & Coordination	480,852
CIP - Preliminary Engineering & Design	3,331,204
CIP - Environmental Studies	13,942,643
CIP - Mitigation	244,952
CIP - Right of Way	57,337
CIP - Utilities	26,242
CIP - Construction	45,962,934



**CAMERON COUNTY REGIONAL MOBILITY AUTHORITY**

Balance Sheet  
As of 4/30/2015  
(In Whole Numbers)

	Current Year
CIP - Construction Management	2,693,623
CIP - Direct Legal Costs	519,593
CIP - Capitalized Interest	3,239,713
CIP - Direct Administration	88,552
CIP - Indirect Administration and Overhead	585,044
Total Capital projects in progress	71,172,689
Other assets	
Other Assets	41,895,820
Total Other assets	41,895,820
Unamortized bond prepaid costs	
2012 Bonds Prepaid Insurance	116,364
2014 Bond Prepaid Insurance	12,098
Total Unamortized bond prepaid costs	128,462
Total Non Current Assets:	129,773,123
Total ASSETS	145,746,277
<b>LIABILITIES</b>	
Current Liabilities	
Accounts payable	
AP - Operations	207,310
AP - Project Exenditures	1,700,670
Total Accounts payable	1,907,979
Accrued expenses	
TxTag Customer Deposits	280
Toll Refunds from MSB	1,725
Accrued Expense	477,495
Total Accrued expenses	479,499
Payroll liabilities	
Federal Tax Withholding	10,607
Payroll Tax Payable	8,289
Retirement Contribution Payable	3,513
Health Insurance Payable	200
Aflac Employee Liabilities	476
Dental Insurance Payable	63
Employee Vision Insurance	25
Total Payroll liabilities	23,173
Deferred revenue	
UFV Fund Deposits	600
Deferred Revenue	3,464
Total Deferred revenue	4,064
Total Current Liabilities	2,414,715
Non Current Liabilities	
Due to other agencies	
Cameron County	167,500
Due to other Govts	2,014,428
Total Due to other agencies	2,181,928
Due to TxDot	
Union Pacific - West Rail Project	26,336,611
Union Pacific - Olmito Switchyard	9,844,058
TxDot FAA - South Padre Island	10,573,364
TxDot FAA - West Parkway	2,244,589
Total Due to TxDot	48,998,622

**CAMERON COUNTY REGIONAL MOBILITY AUTHORITY**

Balance Sheet  
As of 4/30/2015  
(In Whole Numbers)

	Current Year
Long term bond payable	
2010A Bonds Payable	4,480,000
2010A Unamortized Premium	64,212
2010B Bonds Payable	15,535,000
2012 Bonds Payable	40,000,000
2012 Unamortized Premium	4,160,407
2014 Bonds Payable	5,000,000
2014 Bond Premium	155,424
2010A Refund Series 2014	6,325,000
2010A Refund Premium Series 2014	137,092
2015 CO Bonds	4,500,000
2015 CO Bonds Discount	(39,559)
Total Long term bond payable	80,317,576
Total Non Current Liabilities	131,498,127
Total LIABILITIES	133,912,842
NET POSITION	
Beginning net position	7,812,522
Total Beginning net position	7,812,522
Changes in net position	4,020,913
Total Changes in net position	4,020,913
Total NET POSITION	11,833,435
TOTAL LIABILITIES AND NET POSITION	145,746,277

**CAMERON COUNTY REGIONAL MOBILITY AUTHORITY**

Statement of Revenues, Expenditures And Changes in Net Assets - Unposted Transactions Included In Report  
From 3/1/2015 Through 4/30/2015  
(In Whole Numbers)

	Current Period Actual	Current Year Actual	YTD Budget - Original	YTD Budget Variance - Original
Operating Revenues				
Vehicle registration fees	461,670	1,637,300	2,900,000	(1,262,700)
Toll revenues	53,259	209,566	553,472	(343,907)
TRZ revenue	378,840	378,840	425,000	(46,160)
Other revenue	0	330,262	500,000	(169,738)
Total Operating Revenues	893,769	2,555,968	4,378,472	(1,822,504)
Operating Expenses				
Personnel costs	123,402	373,730	584,900	211,170
Professional services	22,000	22,000	25,000	3,000
Contractual services	32,864	179,906	533,679	353,773
Debt interest	153,277	1,723,068	4,518,871	2,795,803
Advertising & marketing	17,534	42,699	55,500	12,801
Data processing	1,937	5,489	10,000	4,511
Dues & memberships	2,500	13,480	14,500	1,020
Education & training	128	2,798	11,000	8,202
Fiscal agent fees	5,841	8,466	15,000	6,534
Insurance	7,170	25,347	50,000	24,653
Maintenance & repairs	2,244	4,206	15,000	10,794
Office supplies	18,382	21,535	25,250	3,715
Road maintenance	20,941	100,574	130,000	29,426
Rent	1,332	4,213	8,000	3,787
Toll services	6,970	49,624	383,472	333,848
Travel	6,962	24,419	40,000	15,581
Utilities	4,106	9,463	20,000	10,537
Total Operating Expenses	427,590	2,611,017	6,440,172	3,829,155
Non Operating Revenue				
Interest income	1,548	6,178	0	6,178
Other Financing sources	0	0	2,061,700	(2,061,700)
Total Non Operating Revenue	1,548	6,178	2,061,700	(2,055,522)
Changes in Net Assets	467,727	(48,871)	0	(48,871)
Net Assets Beginning of Year	(516,598)	0	0	0
Net Assets End of Year	(48,871)	(48,871)	0	(48,871)

**CAMERON COUNTY REGIONAL MOBILITY AUTHORITY**

## Statement of Cash Flows

As of 4/30/2015

	<u>Current Period</u>	<u>Current Year</u>
Cash Flows from Operating Activities		
Receipts from Vehicle Registration Fees	782,256.00	1,443,355.15
Receipts from Toll Revenues	64,167.33	450,075.50
Receipts from TRZ Revenue	0.00	0.00
Payments to Vendors	(150,910.42)	(514,219.04)
Payments to Employees	(103,538.62)	(356,871.51)
Total Cash Flows from Operating Activities	<u>591,974.29</u>	<u>1,022,340.10</u>
Cash Flows from Capital and related Financing Activities		
Acquisitions of Property and Equipment	(86,770.58)	(753,528.86)
Receipts from Grants and Other income	3,481.06	339,668.63
Payments on Interest	(153,276.95)	(1,723,067.99)
Acquisitions of Construction in Progress	(5,084,535.34)	(13,715,046.36)
Principal Payments on Bonds	4,460,441.25	3,922,532.85
Proceeds from TxDot FAA	1,215,159.14	1,755,157.03
Proceeds from Other Governments	(256.00)	892,377.71
Total Cash Flows from Capital and related Financing Activities	<u>354,242.58</u>	<u>(9,281,906.99)</u>
Net Increase (Decrease) in Cash & Cash Equivalents	<u>946,216.87</u>	<u>(8,259,566.89)</u>
Beginning Cash & Cash Equivalents	13,215,279.17	22,421,062.93
Ending Cash & Cash Equivalents	<u>14,161,496.04</u>	<u>14,161,496.04</u>

**CAMERON COUNTY REGIONAL MOBILITY AUTHORITY**  
Capital Projects in Progress - Unposted Transactions Included In Report  
From 3/1/2015 Through 4/30/2015  
(In Whole Numbers)

	Current Period Actual	Current Year Actual	YTD Budget - Original	YTD Budget Variance - Original
Capital Projects				
South Padre Island 2nd Access	250,541	1,429,061	1,400,000	(29,061)
West Parkway Project	924	44,679	800,000	755,321
Outer Parkway	280	17,959	2,500,000	2,482,041
FM 1925	1,253	45,996	1,000,000	954,004
West Rail Relocation	208,849	1,376,641	1,000,000	(376,641)
Olmito Switchyard	0	75,753	0	(75,753)
SH 550	3,473,086	8,458,738	18,104,600	9,645,862
SH 32 (East Loop)	97,154	115,783	7,000,000	6,884,217
FM 803	1,253	52,584	50,000	(2,584)
Port Isabel Access Rd	0	0	100,000	100,000
FM 509	0	0	1,000,000	1,000,000
North Rail Relocation	0	0	400,000	400,000
Total Capital Projects	<u>4,033,340</u>	<u>11,617,193</u>	<u>33,354,600</u>	<u>21,737,407</u>



# CAMERON COUNTY REGIONAL MOBILITY AUTHORITY

Statement of Revenues and Expenditures - Unposted Transactions Included In Report  
From 3/1/2015 Through 4/30/2015  
(In Whole Numbers)

		Current Period Actual	Current Year Actual	YTD Budget - Original	YTD Budget Variance - Original
Capital Projects					
South Padre Island 2nd Access	2000				
CAPITALIZED PROJECT COSTS	01CAP				
CIP - Planning & Coordination	15100	12,231	97,423	0	(97,423)
CIP - Preliminary Engineering & Design	15110	8,182	9,351	400,000	390,649
CIP - Environmental Studies	15120	158,428	1,238,048	1,000,000	(238,048)
CIP - Mitigation	15130	71,559	71,559	0	(71,559)
CIP - Direct Legal Costs	15300	140	12,680	0	(12,680)
Total South Padre Island 2nd Access		250,541	1,429,061	1,400,000	(29,061)
West Parkway Project	2025				
CAPITALIZED PROJECT COSTS	01CAP				
CIP - Environmental Studies	15120	0	0	800,000	800,000
CIP - Direct Legal Costs	15300	924	15,162	0	(15,162)
CIP - Direct Administration	15320	0	29,517	0	(29,517)
Total West Parkway Project		924	44,679	800,000	755,321
Outer Parkway	2050				
CAPITALIZED PROJECT COSTS	01CAP				
CIP - Planning & Coordination	15100	0	12,200	500,000	487,800
CIP - Preliminary Engineering & Design	15110	0	0	1,000,000	1,000,000
CIP - Environmental Studies	15120	0	0	1,000,000	1,000,000
CIP - Direct Legal Costs	15300	280	5,759	0	(5,759)
Total Outer Parkway		280	17,959	2,500,000	2,482,041
FM 1925	2075				
CAPITALIZED PROJECT COSTS	01CAP				
CIP - Planning & Coordination	15100	0	0	350,000	350,000
CIP - Preliminary Engineering & Design	15110	0	0	350,000	350,000
CIP - Environmental Studies	15120	0	0	300,000	300,000
CIP - Direct Legal Costs	15300	1,253	16,479	0	(16,479)
CIP - Direct Administration	15320	0	29,517	0	(29,517)
Total FM 1925		1,253	45,996	1,000,000	954,004
West Rail Relocation	2100				
CAPITALIZED PROJECT COSTS	01CAP				
CIP - Mitigation	15130	255	2,582	0	(2,582)
CIP - Right of Way	15200	35,429	57,337	0	(57,337)
CIP - Construction	15220	0	896,969	1,000,000	103,031
CIP - Construction Management	15240	171,254	415,119	0	(415,119)
CIP - Direct Legal Costs	15300	1,911	4,634	0	(4,634)
Total West Rail Relocation		208,849	1,376,641	1,000,000	(376,641)
Olmito Switchyard	2150				
CAPITALIZED PROJECT COSTS	01CAP				
CIP - Construction	15220	0	75,753	0	(75,753)
Total Olmito Switchyard		0	75,753	0	(75,753)
SH 550	2200				
CAPITALIZED PROJECT COSTS	01CAP				
CIP - Preliminary Engineering & Design	15110	0	0	2,500,000	2,500,000
CIP - Mitigation	15130	71,975	71,975	0	(71,975)
CIP - Utilities	15210	0	0	604,600	604,600
CIP - Construction	15220	3,363,366	8,126,460	14,000,000	5,873,540
CIP - Construction Management	15240	35,599	256,064	1,000,000	743,936
CIP - Direct Legal Costs	15300	2,146	4,239	0	(4,239)
Total SH 550		3,473,086	8,458,738	18,104,600	9,645,862
SH 32 (East Loop)	2250				

UNAUDITED FINANCIALS SUBJECT TO CHANGE

# CAMERON COUNTY REGIONAL MOBILITY AUTHORITY

Statement of Revenues and Expenditures - Unposted Transactions Included In Report  
From 3/1/2015 Through 4/30/2015  
(In Whole Numbers)

		Current Period Actual	Current Year Actual	YTD Budget - Original	YTD Budget Variance - Original
CAPITALIZED PROJECT COSTS	01CAP				
CIP - Planning & Coordination	15100	97,154	114,565	500,000	385,435
CIP - Preliminary Engineering & Design	15110	0	0	5,000,000	5,000,000
CIP - Environmental Studies	15120	0	1,218	1,500,000	1,498,782
Total SH 32 (East Loop)		97,154	115,783	7,000,000	6,884,217
FM 803	2300				
CAPITALIZED PROJECT COSTS	01CAP				
CIP - Mitigation	15130	0	7,027	50,000	42,973
CIP - Direct Legal Costs	15300	1,253	16,039	0	(16,039)
CIP - Direct Administration	15320	0	29,517	0	(29,517)
Total FM 803		1,253	52,584	50,000	(2,584)
Port Isabel Access Rd	2400				
CAPITALIZED PROJECT COSTS	01CAP				
CIP - Environmental Studies	15120	0	0	100,000	100,000
Total Port Isabel Access Rd		0	0	100,000	100,000
FM 509	2450				
CAPITALIZED PROJECT COSTS	01CAP				
CIP - Preliminary Engineering & Design	15110	0	0	1,000,000	1,000,000
Total FM 509		0	0	1,000,000	1,000,000
North Rail Relocation	2500				
CAPITALIZED PROJECT COSTS	01CAP				
CIP - Environmental Studies	15120	0	0	400,000	400,000
Total North Rail Relocation		0	0	400,000	400,000
Total Capital Projects		4,033,340	11,617,193	33,354,600	21,737,407

**CAMERON COUNTY REGIONAL MOBILITY AUTHORITY**  
Toll Revenues and Expenditures - Unposted Transactions Included In Report  
From 3/1/2015 Through 4/30/2015

	Current Period Actual	Current Year Actual	YTD Budget - Original	YTD Budget Variance - Original
<b>Toll Revenues</b>				
Toll Revenue	21,426.00	63,010.44	170,848.00	(107,837.56)
Toll Violation Revenue	14,595.83	48,908.06	100,000.00	(51,091.94)
Interop Revenue	17,237.00	77,648.50	282,624.00	(204,975.50)
Pay by Mail Revenue	0.00	19,998.50	0.00	19,998.50
<b>Total Toll Revenues</b>	<b>53,258.83</b>	<b>209,565.50</b>	<b>553,472.00</b>	<b>(343,906.50)</b>
<b>Toll Expenditures</b>				
<b>Toll services</b>				
Toll Services	0.00	20,308.40	178,672.00	158,363.60
Interop Collection Fees	558.32	5,312.73	19,800.00	14,487.27
PBM Add on Fees	0.00	1,135.23	0.00	(1,135.23)
PBM Image Review	6,411.85	22,867.49	175,000.00	152,132.51
PBM Pre-Court Program	0.00	0.00	10,000.00	10,000.00
<b>Total Toll services</b>	<b>6,970.17</b>	<b>49,623.85</b>	<b>383,472.00</b>	<b>333,848.15</b>
<b>Toll maintenance</b>				
Maintenance - SH 550	20,940.53	100,574.29	130,000.00	29,425.71
<b>Total Toll maintenance</b>	<b>20,940.53</b>	<b>100,574.29</b>	<b>130,000.00</b>	<b>29,425.71</b>
<b>Total Toll Expenditures</b>	<b>27,910.70</b>	<b>150,198.14</b>	<b>513,472.00</b>	<b>363,273.86</b>
<b>Net Change in Toll Services</b>	<b>25,348.13</b>	<b>59,367.36</b>	<b>40,000.00</b>	<b>19,367.36</b>

**4-C    CONSIDERATION AND APPROVAL OF TASK ORDER FOR BACK  
OFFICE SYSTEM AND CUSTOMER SERVICE CENTER, PHASE II  
WITH FAGAN CONSULTING**





## Form Task Order

**CAMERON COUNTY REGIONAL MOBILITY AUTHORITY**

**Task Order Number: 1504**

**Task Order Name:** Back Office System and Customer Service Center – Phase 2

Task Order Effective Date: May 1, 2015

**CCRMA Contact for this Task Order: Jeff Saurenmann**

### ***1. Introduction (Statement of Purpose and Need)***

Cameron County Regional Mobility Authority (CCRMA) currently operates toll facilities in Cameron County utilizing an electronic toll collection system that employs automatic vehicle identification using transponders and a violation enforcement system with integrated cameras to capture digital images of license plates.

CCRMA contracts with the Central Texas Regional Mobility Authority for access to the Texas Statewide Interoperability System and to provide Customer Service Center (CSC) services for its customers.

In order to better serve CCRMA's customers, increase revenue and financial control, and support local violation processing, collections, and court efforts, CCRMA intends to implement a Back Office System (BOS) and local CSC operations.

A local BOS will allow CCRMA flexibility to implement agency business rules locally related to violation processing while still participating in Statewide Interoperability to support customers with TxTag, TollTag, and EZ-Tag accounts. CCRMA does not intend to issue CCRMA transponders at this time and plans to continue promoting TxTag for CCRMA toll road customers.

**CCRMA will establish a local CSC and BOS that includes the following capabilities:**

- Print and mail of Toll Bills and Violation Notices
- Collection efforts via mail and outbound calls,
- Image Review of digital vehicle images captured by the current lane system
- Enforcement via the Justice of the Peace Court system
- Payment processing via customer walk-ins and a 3<sup>rd</sup> party website
- General customer service via phone, email, and storefront
- Establishment of customer violation accounts to capture transaction, payment, demographic and customer interaction history



- Financial, operational, and system performance reporting

This project is currently in the business rules development phase with CCRMA. CCRMA will procure a BOS and may outsource some functions such as a 3<sup>rd</sup> party website for payment processing and print / mail services for customer correspondence. CCRMA may also partner with other state and local entities to obtain vehicle owner information and information sharing with the court system.

CCRMA has obtained facilities to provide a storefront that will be staffed with a small local team responsible for image review, customer service inquiries, payment processing via phone and walk-ins, collection efforts and establishment of payment plans, and court package creation.

CCRMA has visited other toll agencies of similar size and operations to gain knowledge of their operational and system approach and capabilities.

Fagan Consulting recommends that CCRMA fully review the challenges and costs associated with implementing and maintaining a BOS and CSC operation before moving forward with this effort by performing a cost benefit analysis and considering all potential risks.

It is also suggested this project is managed in multiple phases:

- Phase 1 – Cost / Risk Analysis, site visits, Project Kick-off, and Business Rule development
- Phase 2 – RFP development and issuance, proposal evaluation, vendor selection and contract negotiation,
- Phase 3 – Requirements gathering, traceability, and system design, factory, integration, and site acceptance testing, implementation and post implementation monitoring, and standard operating procedure (SOP) development

Fagan Consulting will assist in this process as requested/directed by CCRMA. Fagan Consulting will closely coordinate with CCRMA's staff during all phases of the project, and work with their partners / vendors as directed by CCRMA.

Fagan Consulting will also have primary responsibility in ensuring the products delivered meet the requirements of the ILA and are fully demonstrated and tested to ensure such.



## ***II. Scope of Work – Phase II***

Fagan Consulting understands its primary tasks regarding the BOS and CSC operations project include the following:

1. Evaluate the impact of the project from a technological, financial, and operational perspective.
2. Oversight of the development of required system specifications related to systems and operational requirements.
3. Participate in project meetings as toll system and operations subject matter expert.
4. Review, comment on and in some cases develop documentation of envisioned systems to ensure feasibility of integrating the new systems/operations with CCRMA's existing systems/operations.
5. Oversee work and review work product resulting from the project scope described above.

## ***III. Task Outputs by Consultant***

Outputs from the task include the following:

1. Support of procurement efforts including RFP development, posting, evaluation, vendor selection, and contractual negotiations
2. Technical information as requested/required by/for Back Office System provider and other partners.
3. Project artifacts including meeting agendas & minutes, project charter, project plan, project schedule, and status reports as required.
4. Development of technical requirements, business rules, and SOPs as needed by CCRMA.
5. Comments related to all submitted documentation regarding efforts described above.

## ***IV. Work Schedule***

The work schedule below represents Phase 2 as described above. The duration of the task is estimated to last from May, 2015 through November 2015.



**V. Compensation** (NOTE: Compensation will be based on actual hours worked and direct billable expenses incurred. The following is a budgetary Maximum-not-to-Exceed amount).

Assigned Staff	Hourly Rate	Total Estimated Hours	Estimated Cost
Fagan	\$190.00	0	\$0
Brownsberger	\$188.00	0	\$0
Lindsay	\$168.00	60	\$10,080
Mack	\$168.00	0	\$0
Bishop	\$168.00	60	\$10,080
Saurenmann	\$168.00	210	\$35,280
Sub Total		330	\$55,440
Expenses		4	\$4,000
Total Cost			\$59,440
Estimated remaining BOS "Phase 1" budget as of May 31, 2015			(\$15,000)
Total Cost for BOS "Phase 2"			\$44,440

**VI. Task Order Maximum-not-to-Exceed Amount** (If applicable).  
The maximum-not-to-exceed amount of this task order is \$44,440.

**VII. Governing Terms**

This Task Order #1504 will be governed by the terms and conditions of the Professional Services Contract between the Cameron County Regional Mobility Authority and Fagan Consulting, LLC dated May 1, 2015, if and as amended (the "Contract"), which is incorporated herein by reference. Any capitalized terms not defined in this Task Order shall have the definitions ascribed to them in the Contract.

The Parties have signed, sealed and delivered this Task Order #1504 effective as of this Task Order Effective Date set forth above.

Cameron County Regional Mobility Authority

By: [Signature] 5.14.15

Fagan Consulting, LLC (SEAL)

By: [Signature]



**4-D CONSIDERATION AND APPROVAL OF A CONTRACT BETWEEN THE CAMERON COUNTY REGIONAL MOBILITY AUTHORITY AND THE REVENUE MARKETS, INC. TO DEVELOP THE INITIAL SCOPE OF THE BRIDGE INTEROPERABILITY BETWEEN CAMERON COUNTY AND THE CITY OF PHARR**

**AGREEMENT  
to Supply  
Information for  
CCRMA Interoperability Hub**

This Agreement For CSC design and formation of scope of work ("Agreement") made this 12<sup>th</sup> day of May, 2015 by and between Cameron County Regional Mobility Authority having its principal office at 3461 Carmen Ave. Rancho Viejo, Texas 78575 ("Authority") and The Revenue Markets, Inc. having its principal office at P.O. Box 10, 5120 Route 209. Accord, New York 12404 ("TRMI").

**WHEREAS**, the parties desire to enter into an agreement for the information needed to aid CCRMA and its Consultants to develop architectural design and develop a scope of work for CCRMA Interoperability Hub.

**NOW, THEREFORE**, in consideration of the mutual covenants and agreements contained in this document, the parties will honor those covenants and agreements with and to each other as follows:

**TRMI Agrees:**

**The scope of work as follows:**

1. Work with CCRMA and their consultants to develop a Quote for an International Bridge Interoperability hub. The following are the intended results to be completed:
  - a. Creation of a high level architecture and design for the multi-bridge interoperability hub for which the proposal will be based.
  - b. A series of questions that will need to be answered by the CCRMA before the interoperability hub proposal can be formulated.
  - c. This proposal is limited to estimate the effort to develop a central hub which will allow member bridges tags to be interoperable with the CCRMA Host. This proposal will include hardware and labor costs, proposed schedule, and scope of work.
  - d. To submit the proposal to CCRMA within 30 days of the execution of this contract.

**The AUTHORITY Agrees:**

1. To pay TRMI the initial payment of Two Thousand Five Hundred Dollars
  - a. (\$2,500.00) within 30 days of the effective date of this contract.
2. To supply TRMI with all necessary information directly or through its consultants. All questions need to be answered within 48 hrs in order to meet the completion date.

**The AUTHORITY and TRMI Agree:**

1. Neither party will assign, transfer, sublet or hypothecate this Agreement or any interest in this Agreement, without the prior written consent of the non-performing party.
2. All materials generated are the property of CCRMA.
3. The work completed is through the direction of CCRMA and its Consultants.
4. All work performed is designed to aid CCRMA and its Consultants in developing a scope of work for the Interoperability Hub. The final scope of work is the responsibility of CCRMA and its Consultants.
5. This Agreement shall be governed by and construed in accordance with the laws of the State of New York and venue for purposes of any action or lawsuit will be in Ulster County, New York.
6. All notices will be in writing addressed to TRMI as follows: The Revenue Markets, Inc., P.O. Box 10, 5120 Route 209, Accord, New York 12404, or to the Authority as follows: Cameron County Regional Mobility Authority., 3461 Carmen Ave. Rancho Viejo, Texas 78575. Unless notice of change of address is sent by one party to the other.

**[Signature Page to Follow]**

IN WITNESS to the signatures below, the PARTIES, have by their signatures, executed this AGREEMENT the day and year first mentioned above:

**CAMERON COUNTY REGIONAL MOBILITY AUTHORITY**

BY: \_\_\_\_\_

NAME: \_\_\_\_\_

TITLE: \_\_\_\_\_

WITNESS OR ATTEST

5.14.15

**THE REVENUE MARKETS, INC.**

BY: \_\_\_\_\_

NAME: \_\_\_\_\_

TITLE: \_\_\_\_\_

WITNESS OR ATTEST

**4-E    PRESENTATION BY SWAMPBOX ENVIRONMENTAL SERVICES  
REGARDING A MITIGATION BANK (TABLED)**



**4-F PRESENTATION BY RESOURCE ENVIRONMENTAL SERVICE  
REGARDING A MITIGATION BANK**

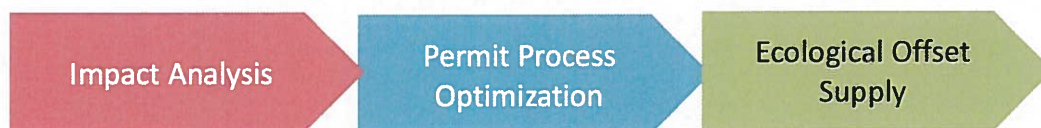


*Resource Environmental Solutions (RES) develops and supplies ecological offsets to help clients obtain required permits for unavoidable project-related impacts to wetlands, streams and habitats.*

*We help clients proactively manage risk from operations in environmentally sensitive areas by providing proactive project impact analyses, streamlining permitting processes, and limiting liability and regulatory exposure.*

*RES is an ecological solution company. We study the problem to understand scope and magnitude and recommend paths forward– at no charge to our clients. RES delivers the required ecological offset solution to obtain project permits, an after-the-fact-permit or to resolve an enforcement action. RES solutions minimize project risk and provide liability transfer.*

<b>Founded in 2007. In 2014, RES acquired EBX, founded in 1997</b>	<b>Conservation easements permanently protecting over 400 sites</b>
<b>110 wetland and stream mitigation sites permitted/in process</b>	<b>155 miles of stream restoration</b>
<b>32,000 restored wetland acres</b>	<b>Rehabilitated and preserved over 3,700 acres of endangered species habitats</b>
<b>4,000 acres of custom mitigation solutions</b>	<b>Reduced over 240 tons of water quality pollutants: nitrogen, phosphorus and suspended sediments</b>
<b>50 Site Closeouts</b>	
<b>100 Energy Industry Clients</b>	



RES  
Resource Environmental Solutions  
5020 Montrose Blvd., Suite 650  
Houston, Texas 77006  
<http://www.res.us> [info@res.us](mailto:info@res.us)  
713-520-5400





# Mitigation Discussion



May 14, 2015

# Mitigation

Replacement of unavoidably lost aquatic (wetland or stream) functions and/or area by establishing, enhancing, restoring and/or preserving wetlands and streams somewhere else.

Required to offset impacts from Dredge or Fill of Waters of the United States

*Compensatory Mitigation* fulfills DA Permits under:

Clean Water Act §404 & Rivers and Harbors Act §10  
(Section 404 or Section 10 Permits)

✓ Mitigation Banks and PRM Sites

*Executive Order 11990: No Net Loss of Wetlands*



# What is a Mitigation Bank?

A wetland, stream, or other aquatic resource area that has been restored, established, enhanced, or (in certain circumstances) preserved to provide compensation for unavoidable impacts to aquatic resources permitted under Section 404 or a similar state or local wetland regulation.

A bank can be created by a government agency, corporation, nonprofit organization, or other entity undertakes these activities under a formal agreement with a regulatory agency.



# Why Mitigation Banks?

- Reduce uncertainty over whether the compensatory mitigation will be successful in offsetting project impacts;
- Assemble and apply extensive financial resources, planning, and scientific expertise not always available to many permittee-responsible compensatory mitigation proposals;
- Reduce permit processing times and provide more cost-effective compensatory mitigation opportunities; and
- Enable the efficient use of limited agency resources in the review and compliance monitoring of compensatory mitigation projects because of consolidation.

# Company Snapshot

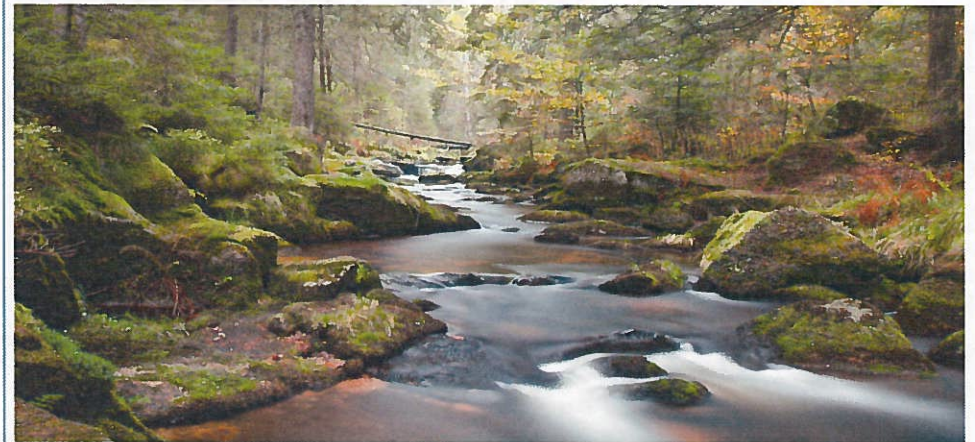
## Overview

- RES is the premier provider of ecological offset solutions in the US
- RES founded in 2007
- In 2014, RES acquired EBX, founded in 1997
- 110 mitigation sites permitted/in process
- Conservation easements protecting over 400 sites
- 32,000 restored wetland acres
- 4,000 acres of custom mitigation solutions
- 155 miles of stream restoration
- Reduced over 240 tons of nutrients: phosphorus, nitrogen, suspended sediments
- Rehabilitated and preserved over 3,700 acres of endangered species habitats
- 100 Energy industry clients

## Mission

*Resource Environmental Solutions develops and supplies ecological offsets to help companies obtain required permits for unavoidable project-related impacts to wetlands, streams and habitats.*

*We help clients proactively manage risk from operations in environmentally sensitive areas by providing proactive project impact analyses, streamlining permitting processes, and limiting liability and regulatory exposure.*



# MBI and PRM Plan Approvals

**“A legal document for the operation, establishment and use of a mitigation bank.”**

(DoD 33 CFR 332.2)

**Required by the Compensatory Mitigation for Losses of Aquatic Resources, 2008 Final Rule**

(DoD 33 CFR Parts 325 and 332 and EPA 40 CFR Part 230, 332.4(c))

**Must be approved by the Interagency Regulatory Team (IRT), comprised of representatives from:**

U.S. Army Corps of Engineers (USACE)

U.S. Fish and Wildlife Service (USFWS)

U.S. Environmental Protection Agency (USEPA)

USDA National Resource Conservation Service (NRCS)

National Oceanic and Atmospheric Administration National Marine Fisheries Service (NOAA-NMFS)

Texas Parks and Wildlife Department (TPWD)

Texas Council on Environmental Quality (TCEQ)

Texas General Land Office (TGLO)





# Ecological Solutions Supply

## Offsets Available

Stream	Wetland	Species
Nutrients		Buffer



**US Army Corps  
of Engineers®**



**Waters of the United States  
including Wetlands and Streams**

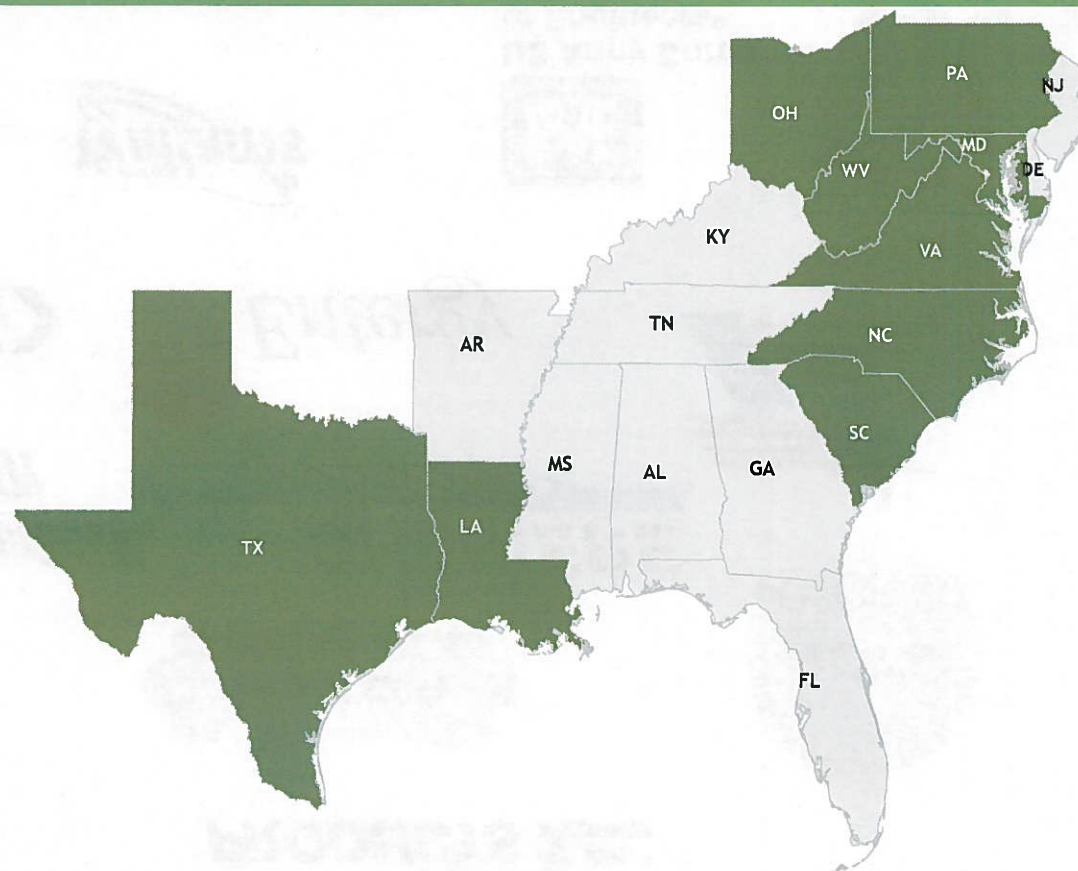
CLEAN WATER ACT  
§401, 402, 404

RIVERS AND  
HARBORS ACT §10



**Threatened and Endangered Species**

ENDANGERED SPECIES ACT §7, 10



## Success History

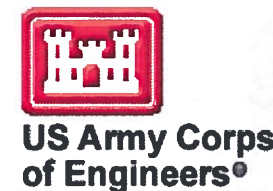
Zero project site  
failures

Zero site violations  
or infractions

Achieved all success criteria, performance  
monitoring and reporting requirements

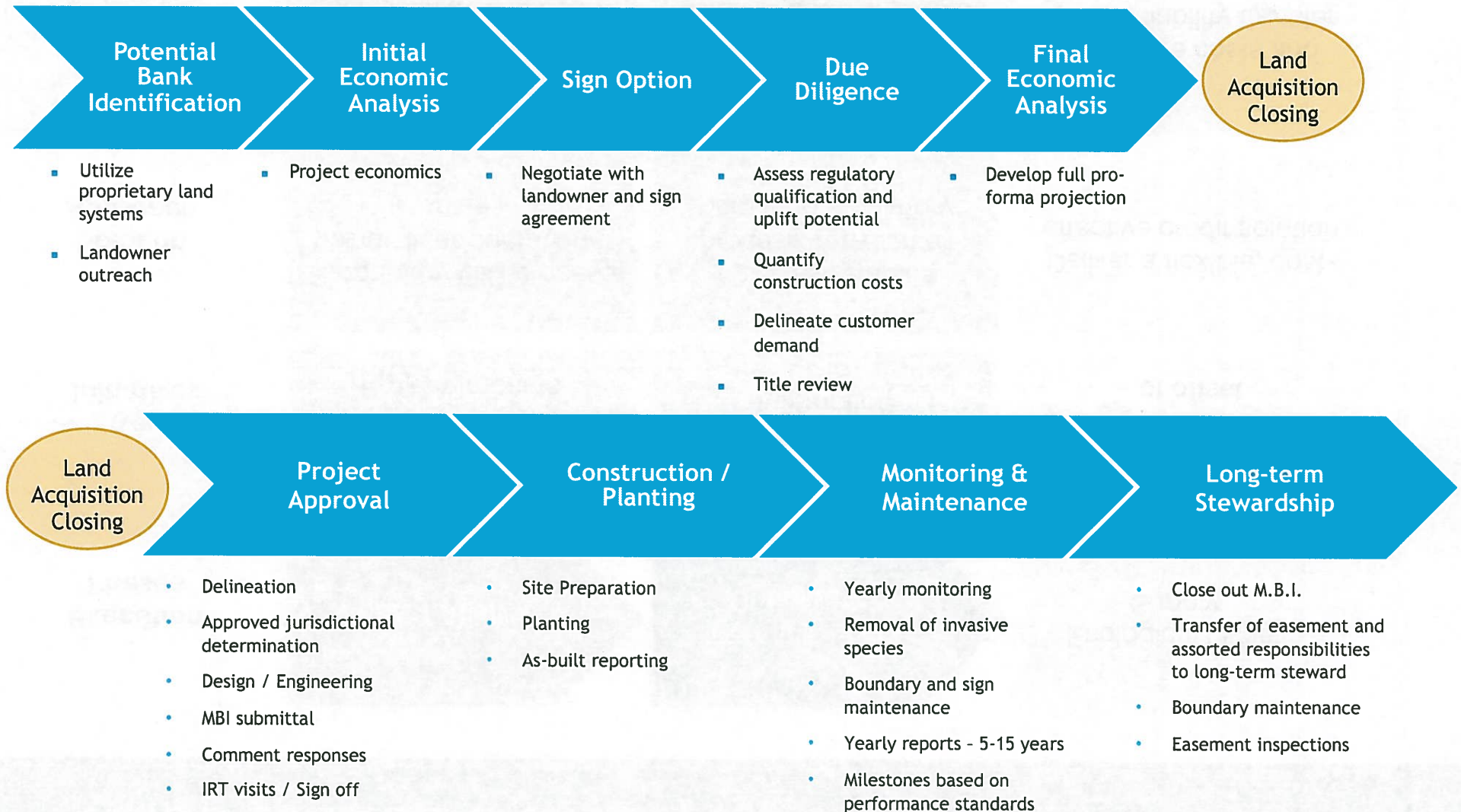


# Sample Client List

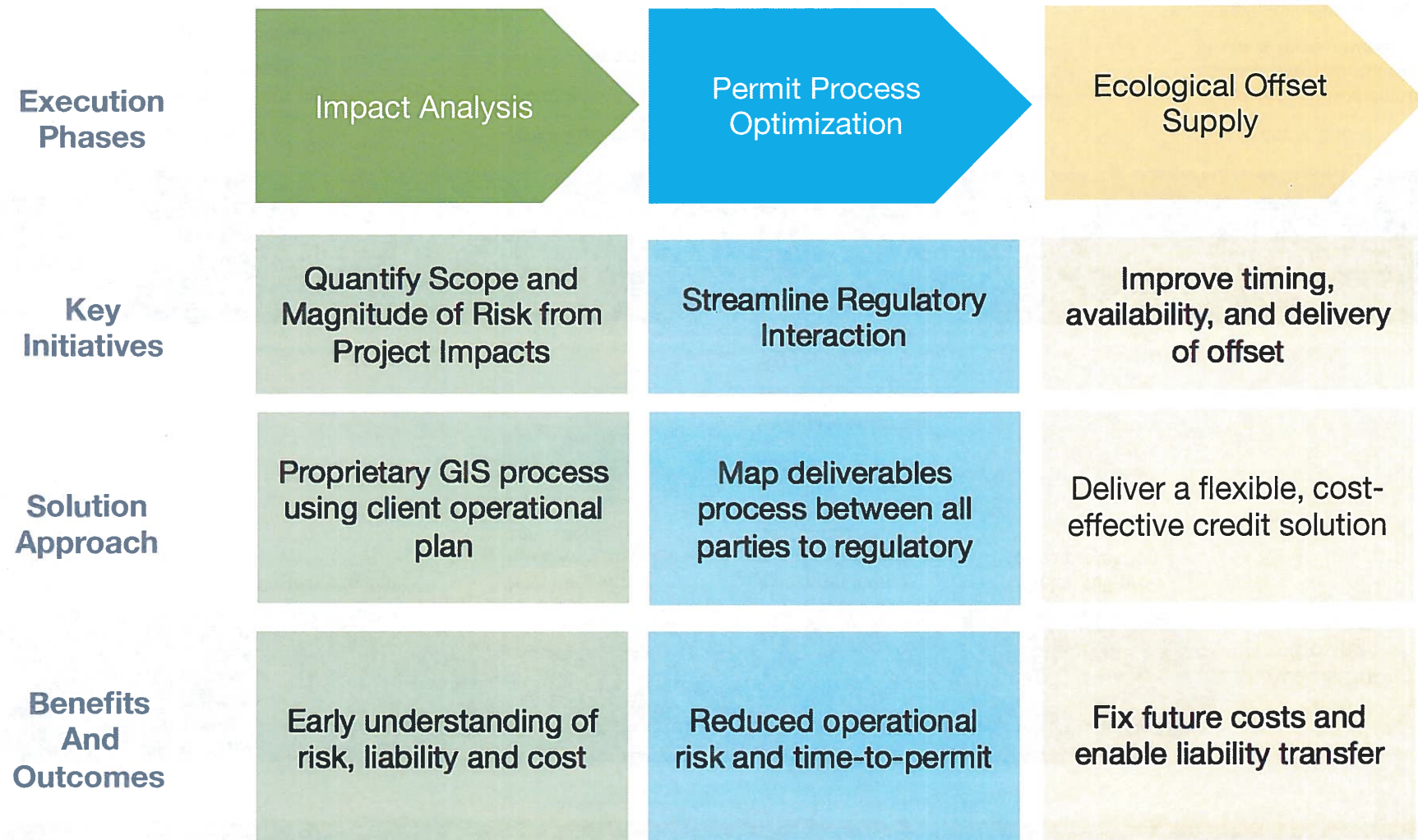




# Operating Process



# Value-Added Delivery







# Mitigation Discussion



May 14, 2015

# Mitigation

Replacement of unavoidably lost aquatic (wetland or stream) functions and/or area by establishing, enhancing, restoring and/or preserving wetlands and streams somewhere else.

Required to offset impacts from Dredge or Fill of Waters of the United States

*Compensatory Mitigation* fulfills DA Permits under:

Clean Water Act §404 & Rivers and Harbors Act §10  
(Section 404 or Section 10 Permits)

✓ Mitigation Banks and PRM Sites

*Executive Order 11990: No Net Loss of Wetlands*



# What is a Mitigation Bank?

A wetland, stream, or other aquatic resource area that has been restored, established, enhanced, or (in certain circumstances) preserved to provide compensation for unavoidable impacts to aquatic resources permitted under Section 404 or a similar state or local wetland regulation.

A bank can be created by a government agency, corporation, nonprofit organization, or other entity undertakes these activities under a formal agreement with a regulatory agency.



# Why Mitigation Banks?

- Reduce uncertainty over whether the compensatory mitigation will be successful in offsetting project impacts;
- Assemble and apply extensive financial resources, planning, and scientific expertise not always available to many permittee-responsible compensatory mitigation proposals;
- Reduce permit processing times and provide more cost-effective compensatory mitigation opportunities; and
- Enable the efficient use of limited agency resources in the review and compliance monitoring of compensatory mitigation projects because of consolidation.

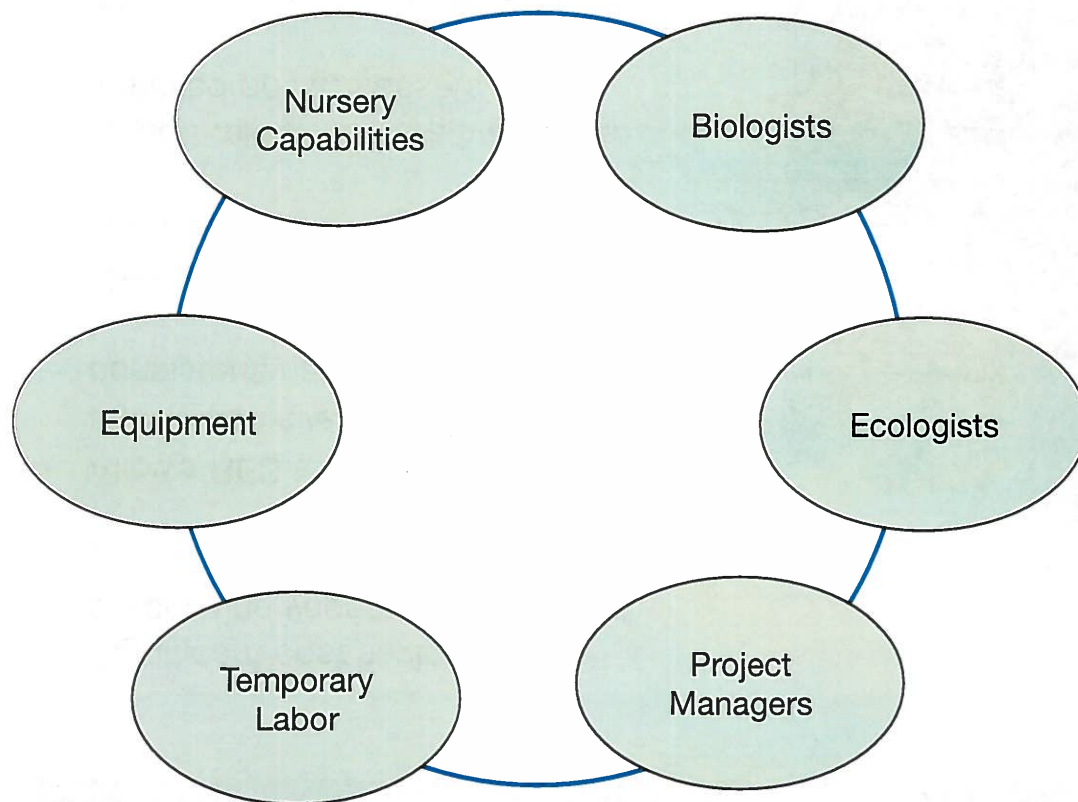
# Nursery Enhances Mitigation Offerings

- Significant cost savings over purchasing vegetation from third parties
- Allows RES to plant more mature trees and to achieve success criteria more consistently and quickly
- Over 2 million restoration stems grown, supplied and planted
- Over 8 million restorative plants installed on RES assets
- DNA-fingerprinted species grown and propagated to fulfill regulatory agency needs
- Leading supplier for successful coastal restoration solutions including dune, marsh, estuarine, emergent marsh, and barrier island restoration



# Integrated Delivery Strategy

*RES has full in-house capabilities to deliver mitigation solutions and conduct ongoing maintenance and monitoring*



## Benefits

- Credits released on schedule for all projects through achievement of success criteria
- Over 8 million trees planted
- 85% tree survivability (60% requirement)
- 50 site closeouts
- RES performs construction, planting, monitoring and maintenance activities internally
- Control costs and enhance margins
- Better visibility for estimating project economics
- Internal accountability to deliver solutions on time and on-budget



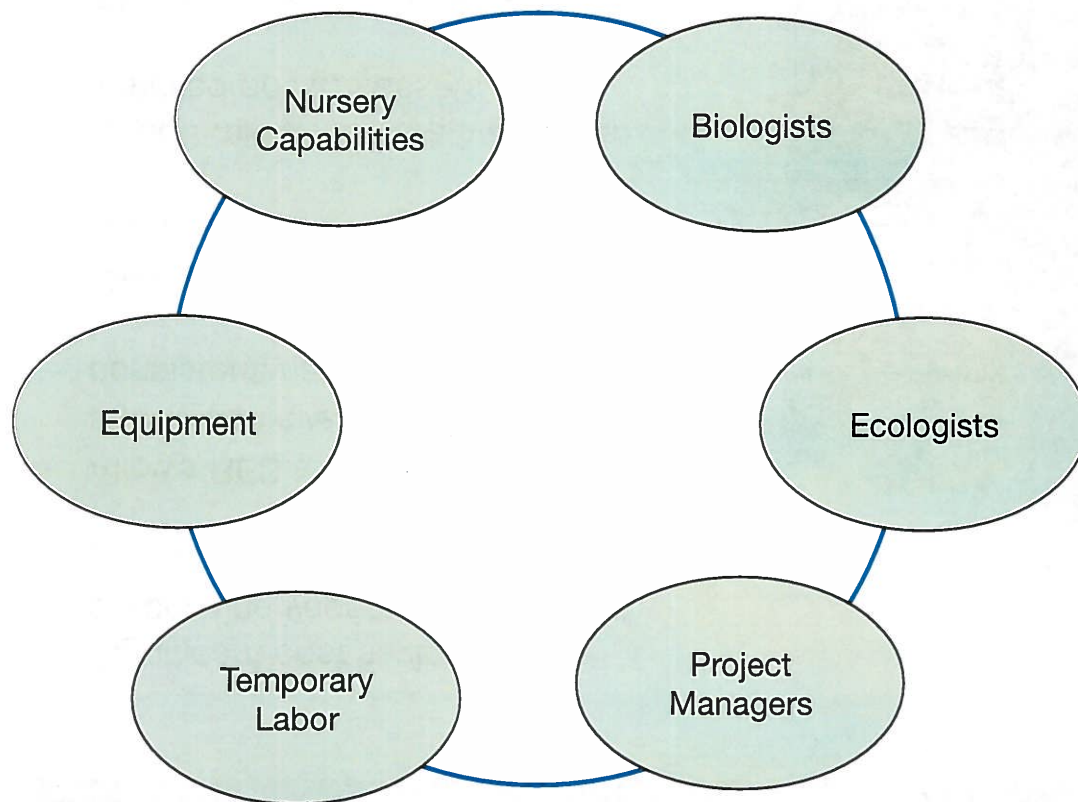
# Nursery Enhances Mitigation Offerings

- Significant cost savings over purchasing vegetation from third parties
- Allows RES to plant more mature trees and to achieve success criteria more consistently and quickly
- Over 2 million restoration stems grown, supplied and planted
- Over 8 million restorative plants installed on RES assets
- DNA-fingerprinted species grown and propagated to fulfill regulatory agency needs
- Leading supplier for successful coastal restoration solutions including dune, marsh, estuarine, emergent marsh, and barrier island restoration



# Integrated Delivery Strategy

*RES has full in-house capabilities to deliver mitigation solutions and conduct ongoing maintenance and monitoring*

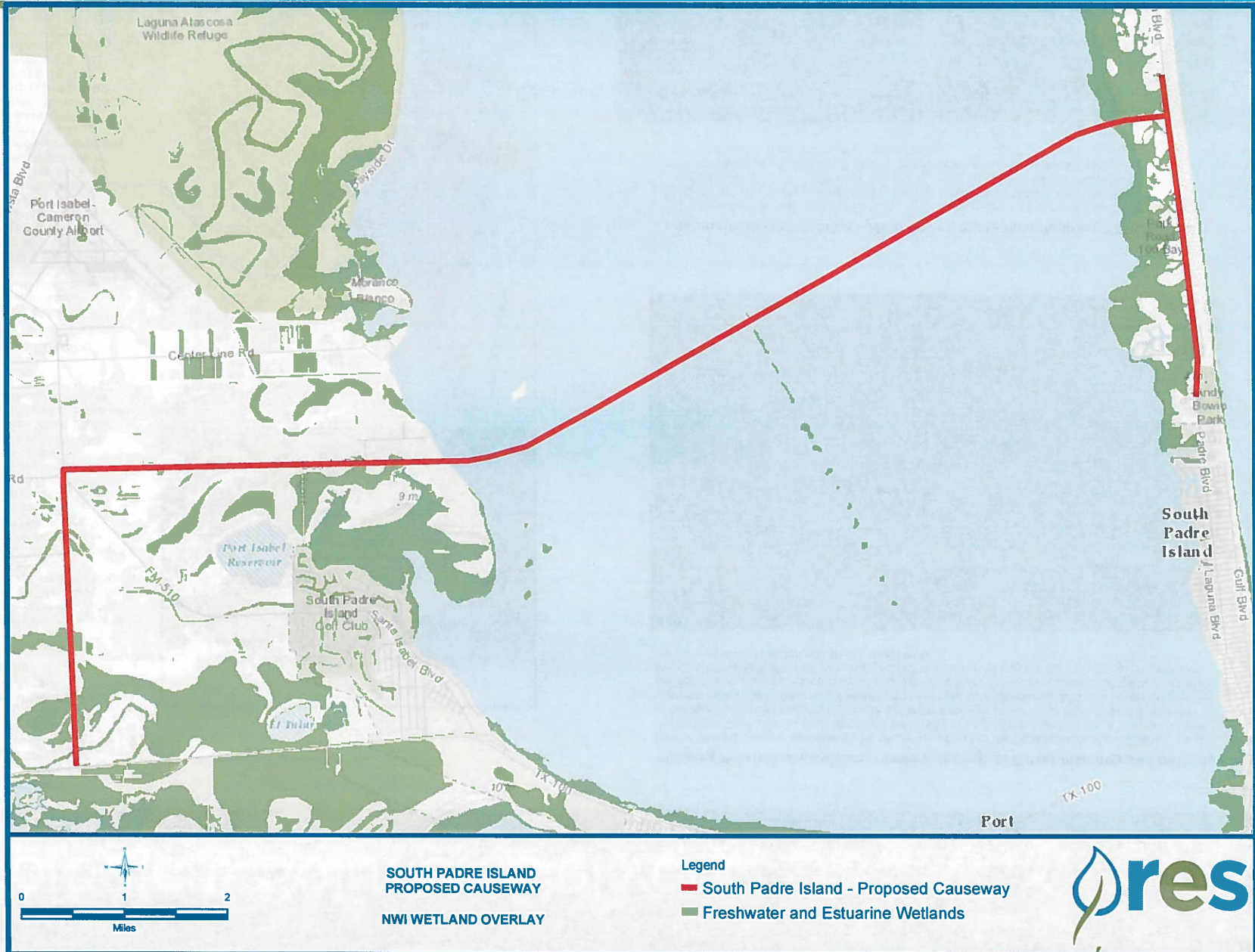


## Benefits

- Credits released on schedule for all projects through achievement of success criteria
- Over 8 million trees planted
- 85% tree survivability (60% requirement)
- 50 site closeouts
- RES performs construction, planting, monitoring and maintenance activities internally
- Control costs and enhance margins
- Better visibility for estimating project economics
- Internal accountability to deliver solutions on time and on-budget



# SPI 2<sup>nd</sup> Causeway



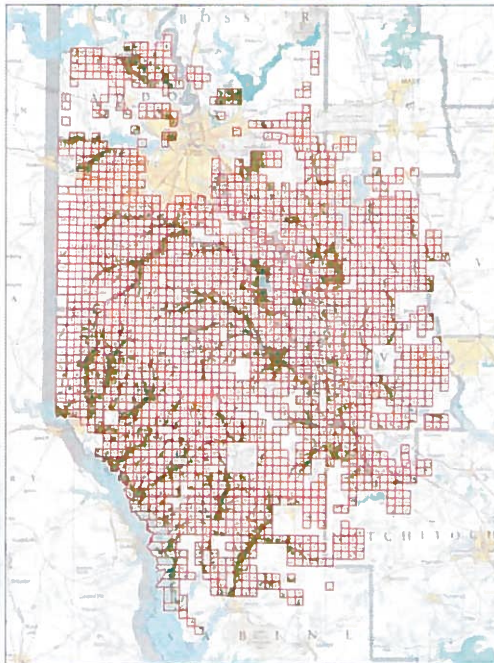


# Ecological Solution Delivery

## Project Examples

### Denbury Green Pipeline – 640 Mitigation Acres Louisiana & Texas

RES worked diligently to deliver a custom, turnkey solution within 90 for this schedule-driven CO2 pipeline. The project spanned 320-miles of 24-inch pipeline, originating in Donaldsonville, Louisiana and terminating in Hastings, Texas. RES worked closely with Denbury's trusted consultants to assess impacts to wetlands and convert this data to an offset requirement. RES located and acquired land commensurate with the restoration preferences of the lead regulatory agency. Finally, RES developed a mitigation plan and obtained regulatory approval within the client's accelerated timeframe. RES executes ongoing maintenance and monitoring for the client commensurate with its regulatory agreements.



### Haynesville Play – Leading Offsets Supplier

RES continues to be the leading supplier of wetland and stream mitigation in the Haynesville Shale development area of northwest Louisiana. From 2008 to the present, RES has delivered nearly 75 percent of mitigation required for unavoidable project-related impacts to forested wetlands. Beginning with the Regency Gas' Haynesville Connector pipeline infrastructure system, RES has executed successive restoration projects to enable long term availability of wetland and stream mitigation acreage in the play area watersheds. For example, fulfillment of all necessary mitigation for Energy Transfer's Tiger Pipeline was followed by supply of offsets for Centerpoint Field Services gathering lines. All of these projects resulted in immediate liability transfer from the midstream operator to RES for all offsets of project-related impacts. RES continues to develop and supply offsets to upstream and midstream clients in this area.

### Williams Midstream – Custom, Turnkey Ecological Offset Planning and Delivery

Linear corridor projects associated with the development of the Pennsylvania Marcellus Shale and the Utica Shale in West Virginia and Ohio are rapidly changing rural landscapes. A key component of environmental stewardship is proactive planning for potential project impacts and designing appropriate habitat mitigation measures for project permit applications. RES specializes in proactive surface impact analysis, specifically enabling development of the appropriate ecological restoration solution. Williams Midstream has engaged RES in these shale plays to deliver ecological offsets in the form of streams restored to their natural state.



### Sabine Pass Liquefaction – Multi-Phase, Multi-Jurisdictional, FERC Permit

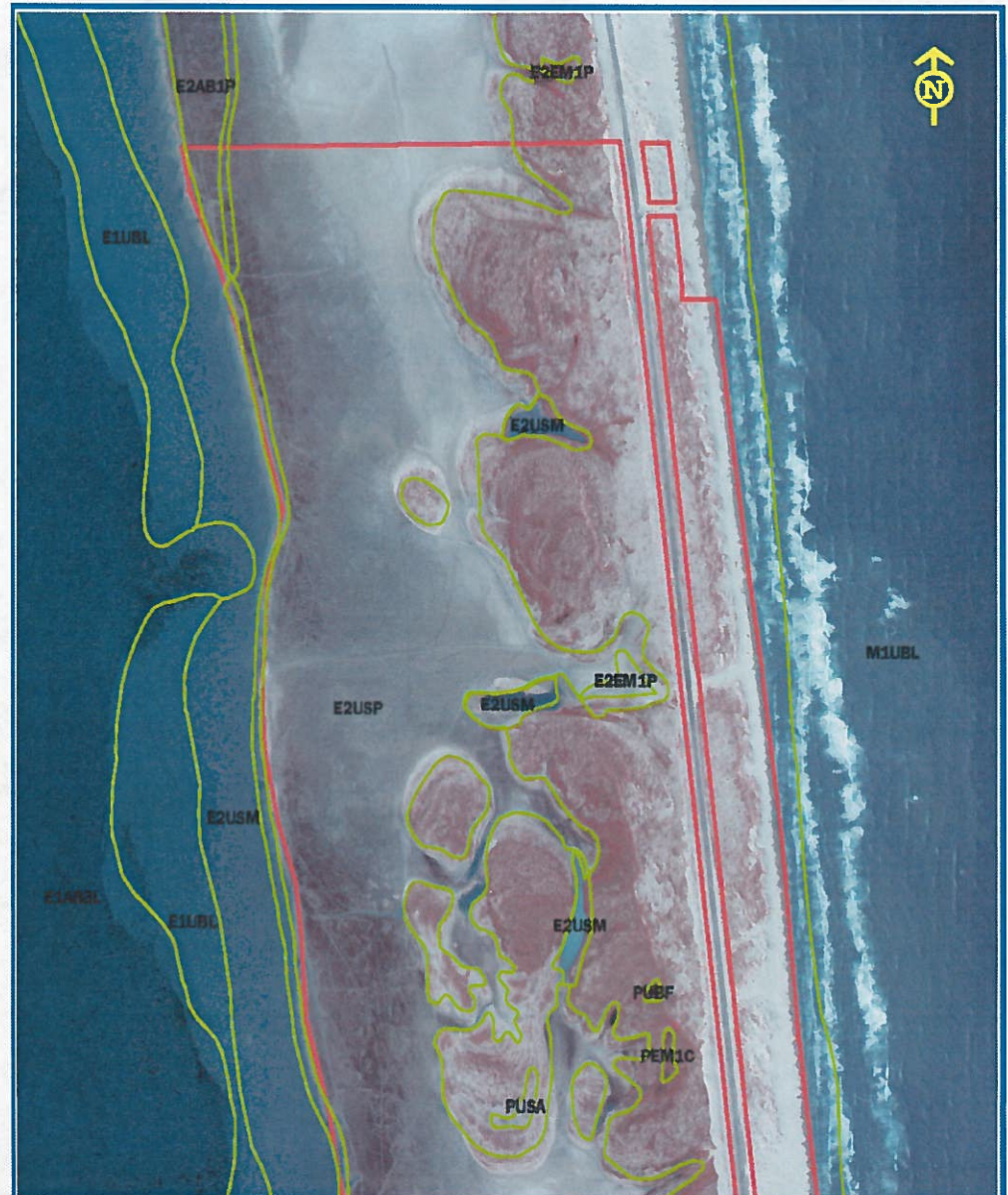
Cheniere Energy relies on the RES team for mitigation development and agency interaction support for permitting planned impacts at their LNG export facility. Permitted in a dredged material placement area, the environmentally sensitive tidal estuarine area is habitat to countless species. RES is proud to support this economic development activity and deliver on the promise of environmental stewardship.



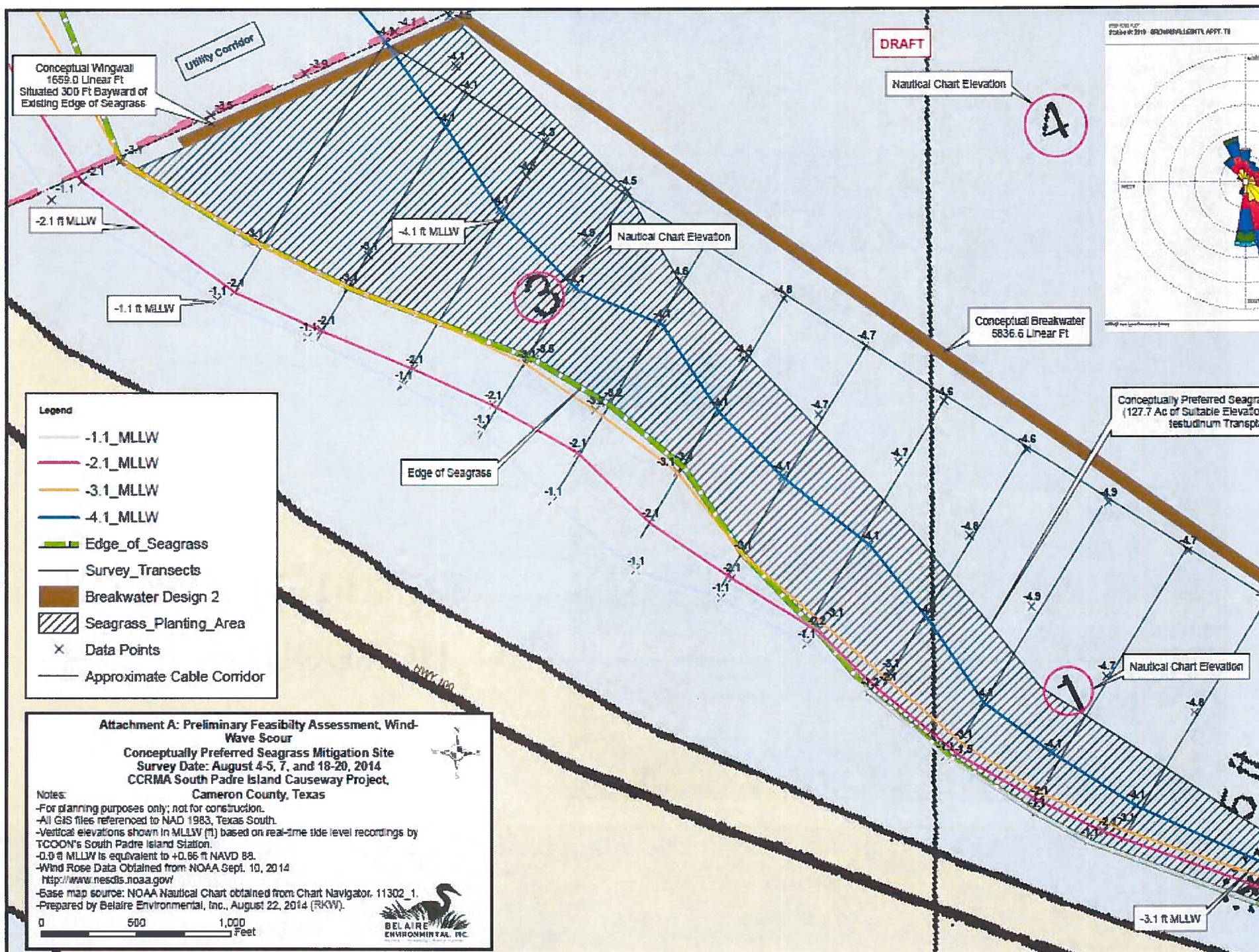


# SPI 2<sup>nd</sup> Causeway

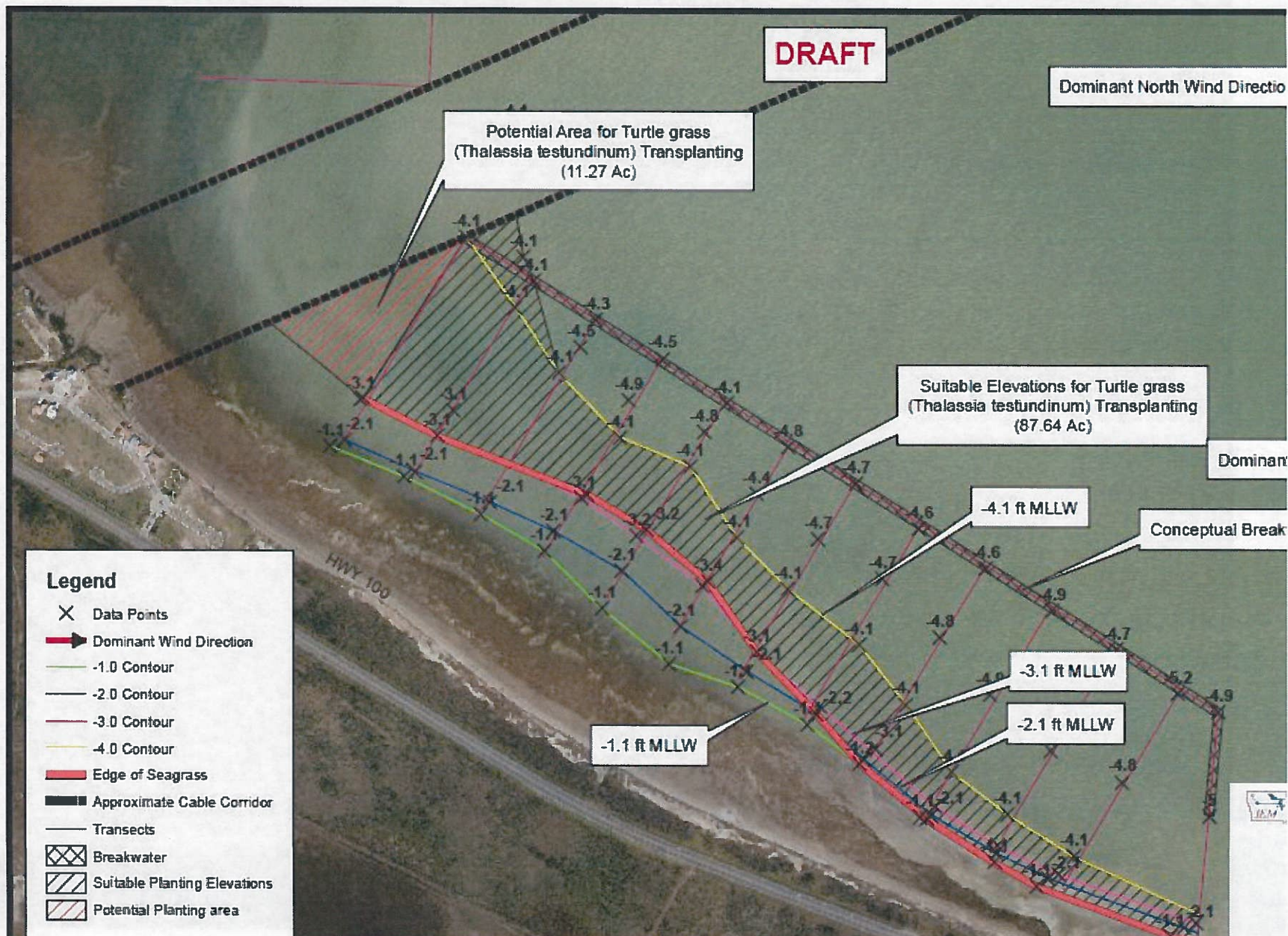
## Pre-Delineation Impact Estimate



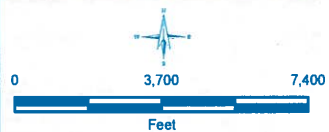












**PROPOSED LNG FACILITIES  
BROWNSVILLE SHIP CHANNEL**

**NWI WETLAND OVERLAY**

**Legend**

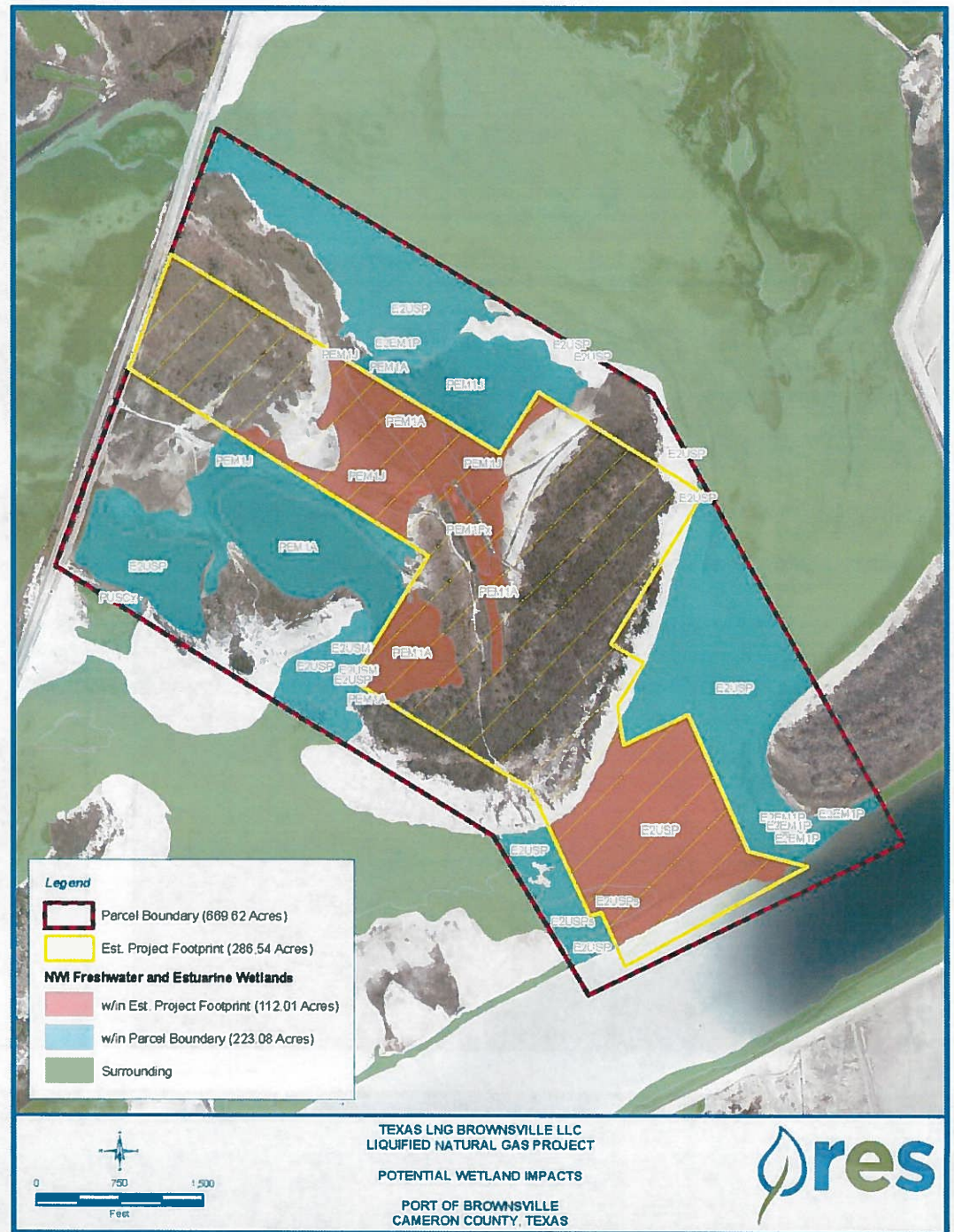
- Texas LNG (~625 Acres)
- Rio Grande LNG (~1,000 Acres)
- Exelon LNG (~600 Acres)
- Gulf Coast LNG (~500 Acres)
- Freshwater and Estuarine Wetlands





# Texas LNG

## Pre-Delineation Impact Estimate



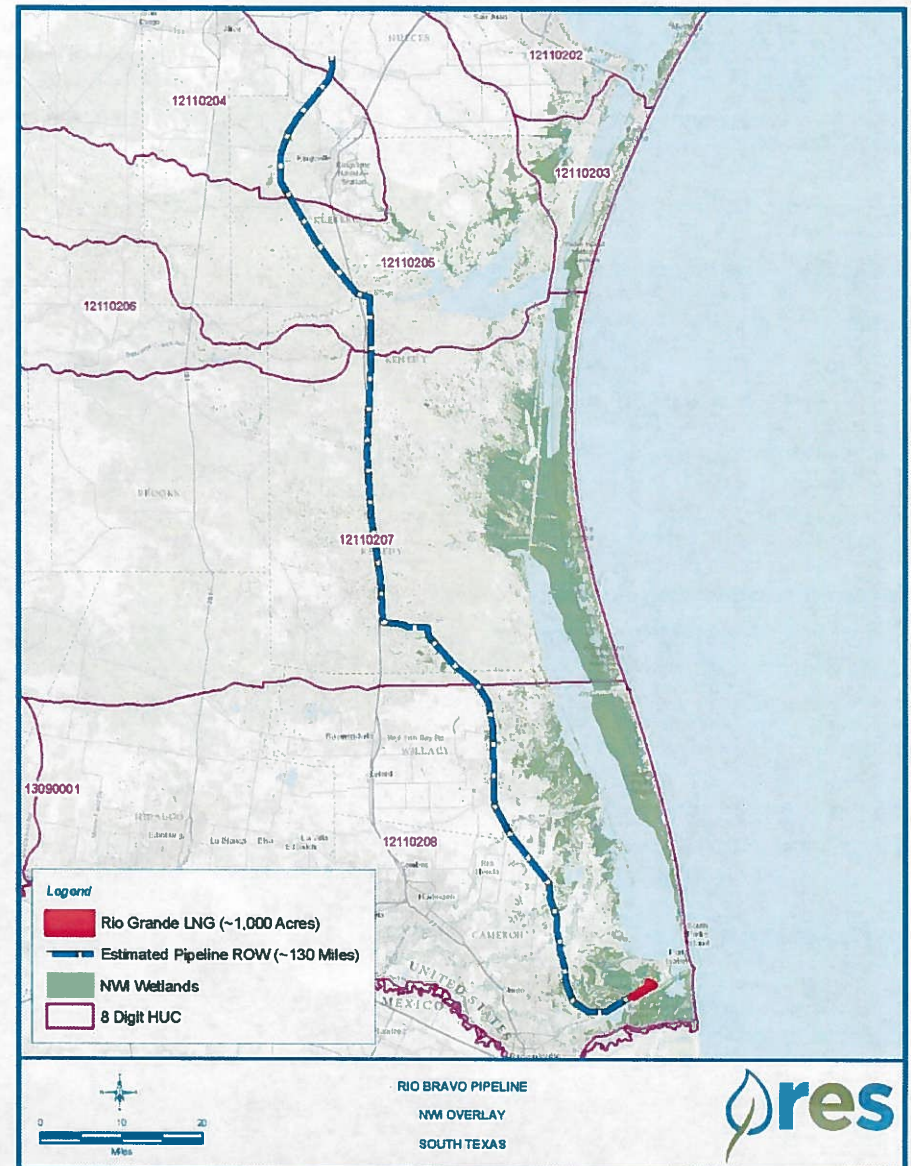
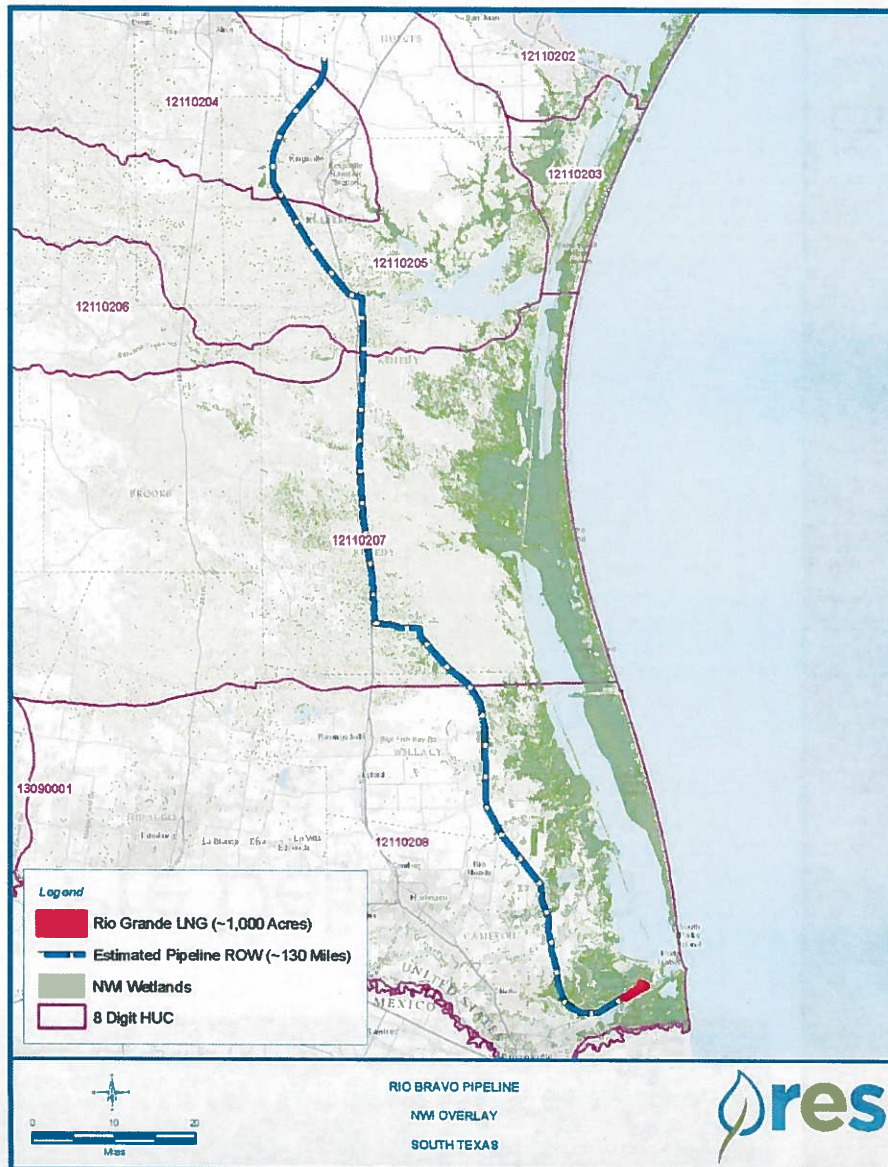


# Rio Grande LNG





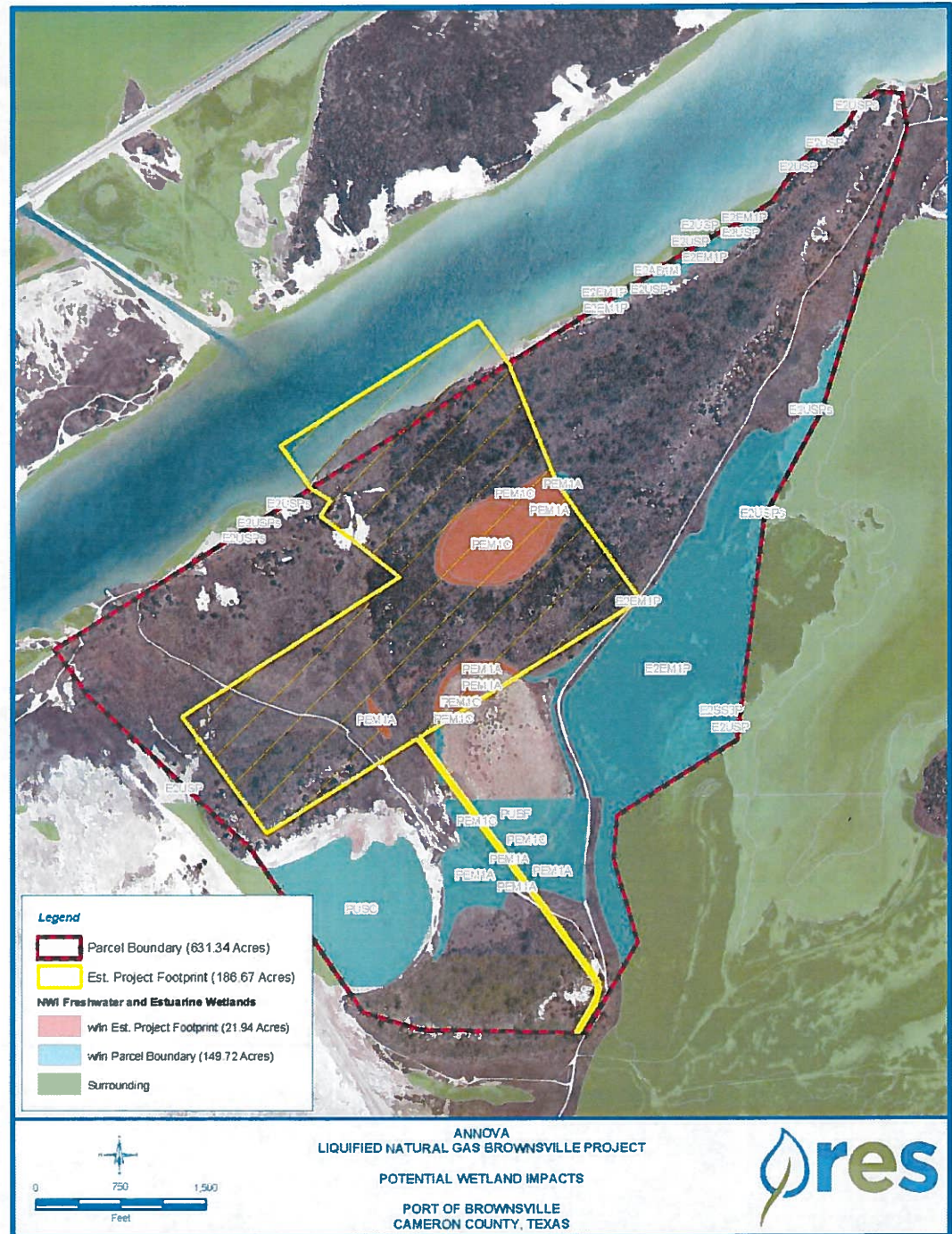
# Rio Bravo Pipeline: Pre Delineation Estimate





# Annova LNG

## Pre Delineation Estimate



# Mitigation Discussion: Alternatives

## Compensatory Mitigation

- Mitigation Bank
  - ☐ None Yet Proposed
  - ☐ Habitat Type
  - ☐ Regulatory Preferences
- In Fee Fund
  - ☐ None Available
- Permittee Responsible Mitigation
  - ☐ On Site, In Kind Restoration
  - ☐ Preservation
    - Donation
      - Where, How?
  - ☐ Turnkey supply as and when needed

# Mitigation Hierarchy

Avoid, Minimize, then Compensate

- No-Impact Projects
  - SPI 2nd Causeway 404 Permit avoidance
    - Overruns
    - Underwriting
    - After the Fact Permits and Enforcement Actions
- Site Planning Optimization
- Route Planning Optimization



# Resource Environmental Solutions, LLC

Baltimore    Baton Rouge    Camden    Charlotte    Houston  
Lafayette    Oak Hill    Pittsburgh    Raleigh    Richmond



<http://www.res.us>  
713-520-5400  
[info@res.us](mailto:info@res.us)







2015

Supplying the Gulf Coast with  
restorative plants, sustainably grown  
at the Nursery at Pointe Aux Chenes



## Coastal Restoration Solutions

We have delivered successful coastal restoration solutions including dune, marsh, estuarine, emergent marsh, and barrier island restoration. Our teams supply sand fencing, terrace establishment and stabilization plantings, custom tree and grass propagation and bottomland hardwood and cypress tupelo swamp restoration.

Our planting teams have planted over 8.1 million trees on properties owned and managed by the company since we were founded in 2007.





**We are experienced at large scale vegetative plantings that support the ongoing battle against wetland and land loss from hurricanes and storm surges along the Gulf Coast.**

**Chaland Headlands Vegetative Plantings and Sand Fencing (BA-38)**

Berm Planting and Supply  
Coastal Protection and Restoration Authority of Louisiana, National Marine Fisheries Service  
Grow, Pull, Pot, Plant, Install  
2.4 miles of restorative beach planting  
Smooth cordgrass: 16,400 1-gallon pots

**East Grand Terre (BA-30)**

Jefferson Parish, 5 miles east of Grand Isle, Waterborne Planting  
Coastal Protection and Restoration Authority of Louisiana, National Marine Fisheries Service  
Grow, Pull, Pot, Plant, Install:  
Smooth cordgrass: 20,000 plugs  
Bitter panicum: 19,200 containers  
Gulf bluestem: 3,200 containers  
Marshhay cordgrass: 6,400 containers  
Sea oats: 3,200 1-gallon pots

**Lost Lake Marsh Creation Restorative Plantings (TE-72)**

U.S. Fish & Wildlife Service, National Marine Fisheries Service  
Grow, Pull, Pot, Plant, Install  
Smooth cordgrass: 13,600 plugs

**West Belle Pass Barrier Headland Restoration (TE-52)**

Barrier Headland and Marsh Creation at Caminada Headlands  
Coastal Protection and Restoration Authority of Louisiana, National Marine Fisheries Service  
Grow, Pull, Pot, Plant, Install  
9,300 linear feet of beach and dune restoration; 150 acres marsh restoration  
Smooth cordgrass: 6,000 plugs  
Seashore paspalum: 8,000 containers  
Bitter panicum: 16,400 containers  
Seacoast bluestem: 4,100 containers  
Seashore dropseed: 8,200 containers  
Marshhay cordgrass: 6,150 containers  
Sea oats: 12,300 1-gallon pots

**Shoreline Protection Emergency Restoration**

Coastal Protection and Restoration Authority of Louisiana  
North Perimeter of Barataria Bay, Bay Jimmy, Plaquemines Parish  
Grow, Pull, Pot, Plant, Install  
Smooth Cordgrass: 13,088 1-gallon pots

**Lake Hermitage Vegetative Restoration (BA-41)**

Coastal Protection and Restoration Authority of Louisiana  
Grow, Pull, Pot, Plant, Install  
Smooth Cordgrass: 123,356 plugs  
Marshhay Cordgrass: 123,356 4" pots



**Coastal Species Restorative Vegetation Supply  
Projects Delivered 2013-2015**

**Restore the Earth Foundation**

Bald Cypress trees	35,770
Nutall oak trees	19,593
Swamp Chestnut trees	13,815
Water Tupelo trees	8,440
Shumard oak trees	12,119
Smooth Cordgrass	3,950
Red maple	3,590
Willow oak trees	6,142
White oak trees	6,032
Water oak trees	625
Black Gum	490
Cherry bark	25

**Martin Ecosystems**

Seashore paspalum	25,275
Smooth cordgrass	22,070
Vetiver plugs	7,880
Iris plugs	595
Juncus plugs	595
Black Mangrove	360

**Crescent Soil and Water District**

Bulrush plugs	4,000
Bitter panicum	2,000

**Lafourche/Terrebonne Soil and  
Water Conservation District**

Bulrush plugs	4,000
---------------	-------

**Terrebonne Parish Levee District**

Smooth cordgrass	5,500
Seashore paspalum	3,800

**Plaquemines Soil and Water  
Conservation District**

Smooth cordgrass	3,000
Bulrush	1,000

**Iberia Soil and Water District**

Smooth cordgrass	8,590
Salt grass	500
Seashore paspalum	500

**Coalition to Restore Coastal  
Louisiana**

Smooth cordgrass	29,780
Bitter panicum	12,000
Black mangrove	8,080
Seashore paspalum	5,000
Spartina patens	4,000
Marshhay cordgrass	2,000
Bald Cypress trees	750

**Ducks Unlimited**

Smooth cordgrass	7,200
------------------	-------

**Shoreline Marine**

Smooth cordgrass	39,500
------------------	--------

**Wildlife Solutions**

Sea Oats	2,000
Seashore paspalum	2,000

**New River Soil and Water  
Conservation District**

Bulrush plugs	2,000
---------------	-------

**St Mary Soil District**

Bulrush plugs	2,850
---------------	-------

**Stream Wetland Services**

Vermilion smooth cordgrass	10,500
----------------------------	--------

**T-Beb Nursery**

Seashore paspalum	10,425
-------------------	--------

**Lake Pontchartrain Basin  
Foundation**

Smooth cordgrass	1,000
------------------	-------

**Executive Director, Water Institute of the Gulf**  
On his first visit to the Nursery at Pointe Aux Chenes:  
*"Amazing" "You are ahead of your time"*



[www.res.us](http://www.res.us)  
[info@res.us](mailto:info@res.us)

**Aaron Pierce**  
**Coastal Restoration and Nursery Manager**  
**985-637-9720**  
**[aaron@res.us](mailto:aaron@res.us)**